

Weymouth Harbour

Guide
2016

Berthing Loyalty Scheme Offer!





JURASSIC skyline

DISCOVER DORSET FROM ABOVE

Experience uninterrupted 360° views of the Jurassic Coast, Portland and Weymouth Harbour on this unique observation tower.

JurassicSkyline.com

Contents

To aid navigation of this guide, please refer to the colour-coded bars to the right of each page and match with the coloured sections shown to the right.



Published for and on behalf of Weymouth & Portland Borough Council by:

RESORT
MARKETING

Resort Marketing Ltd

St Nicholas House, 3 St Nicholas Street,
Weymouth, Dorset DT4 8AD
Tel: 01305 770111 | Fax: 01305 770444
Email: info@resortmarketing.uk
www.resortmarketing.uk

Tidal stream data and tide tables on pages 43-52 reproduced by permission of the Controller of Her Majesty's Stationery Office and the UK Hydrographic Office (www.ukho.gov.uk). © Crown Copyright.

No liability can be accepted by Weymouth & Portland Borough Council or the publisher for the consequences of any inaccuracies. The master of any vessel is solely responsible for its safe navigation. All artwork and editorial is copyright and may not be reproduced without prior permission.
© Resort Marketing Ltd, December 2015.

North Dorset
DISTRICT COUNCIL



W
Weymouth & Portland

Dorset Councils Partnership

Welcome	4
Navigation, Berthing & Facilities	6
Harbour Team	6
Marina Berths	8
Visitor Berths	9
Entering & Leaving the Harbour	10
Outer Harbour Berthing Chart	11
Harbour Facilities	12
Harbour Dues	13
Weymouth & Portland	14
Charming Weymouth Harbour	14
Portland Bill & Portland Races	15
Things to See & Do	16
Local Festivals and Events 2016	18
Town Map	20
Time to Shop	22
Time to Eat	24
Waterfest Weymouth	26
Pommery Dorset Seafood Festival	27
King George III	28
Weymouth Town Bridge	29
Weymouth Watersports Access Zones	30
PWC and Slipway Launching Fees	31
Explore Dorset	32
The Jurassic Coast	32
Lulworth Ranges	33
Heading West	34
Heading East	35
The Community Seagrass Initiative	35
Safety	36
Harbour Directory	38
Yacht Clubs of Weymouth	38
Useful Information & Contacts	39
Marine Services & Sales	40
Tidal Stream Data	43
Tide Tables	50
Bon Voyage	53

WELCOME

TO WEYMOUTH HARBOUR

“On behalf of Weymouth Harbour and the town, I would like to extend a very warm welcome to all our harbour users in 2016.

We are very proud of our harbour, which has something for everybody. Please let the Harbour staff help you to make the most of the facilities whilst you enjoy the local restaurants, bars and attractions, including the beautiful surrounding area. There is plenty to keep you busy here and we hope your experience is a truly positive and memorable one.

Thank you for joining us and I hope that you and your friends will return. Your feedback is important to us so please let us know how we are doing and we welcome any ideas on how we can add to the harbour experience or improve our service. Happy boating.

”

Keith Howorth

Keith Howorth, Harbour Master

Weymouth Harbour Office

13 Custom House Quay, Weymouth,
Dorset DT4 8BG

Tel: +44(0)1305 838423.

Email: weymouthharbour@dorset.gov.uk

www.weymouth-harbour.co.uk



-  Welcome
-  Bienvenue
-  Willkommen
-  Welkom
-  Välkomna
-  Velkommen
-  Tervetuloa
-  Benvenuto
-  Fáilte
-  Velkommen

Photography Credits:

Mark Simons, Geoff Moore, Nigel Lord, Guy Edwardes, Resort Marketing Ltd, Dorset Media Services, Weymouth and Portland Borough Council, West Dorset District Council. Ed Coleman - www.edcolemanphotography.com



willkommen!

„Im Namen des Weymouth Hafens und unserer Stadt möchte ich alle unsere Hafennutzer in 2016 ganz herzlich willkommen heißen.

Wir sind sehr stolz auf unseren Hafen, der für jeden etwas zu bieten hat. Während Sie sich der örtlichen Restaurants, Bars und Attraktionen sowie der atemberaubenden Umgebung erfreuen, stehen Ihnen unsere Hafennutzer bei der Nutzung der Einrichtungen jederzeit gerne mit Rat und Tat zur Seite. Es gibt hier viel zu sehen und zu erleben und wir hoffen, dass Ihr Aufenthalt wahrlich einzigartig und unvergesslich ist.

Danke, dass Sie gekommen sind. Wir freuen uns bereits jetzt darauf, Sie und Ihre Freunde bald wiederzusehen. Ihr Feedback ist uns wichtig. Bitte sagen Sie uns, wie wir abschneiden. Wir begrüßen alle Vorschläge, wie wir Ihr Hafenerlebnis oder unseren Service noch besser machen können. Frohes Bootfahren!“

Keith Howorth, Hafenmeister



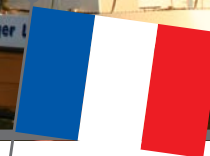
welkom

„Namens de haven van Weymouth en de stad zou ik alle gebruikers van de haven hartelijk welkom willen heten in 2016.

We zijn erg trots op onze haven, die voor elk wat wils biedt. Het havenpersoneel helpt u graag om de faciliteiten optimaal te benutten. Spreek het personeel dus gerust aan. U kunt bijvoorbeeld genieten in plaatselijke restaurants, barretjes en attracties, en dit alles in een prachtige omgeving. Er is genoeg te doen hier, en we hopen dat u een positieve en onvergetelijke ervaring hebt.

Ik dank u voor uw komst en ik hoop dat u en uw vrienden weer eens op bezoek komen. Uw feedback is belangrijk voor ons, dus laat ons zeker weten wat u van onze dienstverlening vindt. We laten u graag meedenken over hoe we de havenervaring kunnen verrijken of hoe we u nog beter van dienst kunnen zijn. Veel bootplezier.“

Keith Howorth, Havenmeester



Bienvenue

« Au nom de la ville et du port de Weymouth, je souhaite la bienvenue à tous les usagers de notre port en 2016.

Nous sommes très fiers de notre port, qui a quelque chose à offrir à chacun. N'hésitez pas à accepter l'assistance du personnel du port qui vous aidera à profiter pleinement de nos installations, restaurants, bars et attractions, en plus de découvrir les magnifiques environs. Les choses à faire ne manquent pas et nous espérons que votre séjour sera vraiment agréable et mémorable.

Merci de nous avoir rendu visite et j'espère que vous et vos amis reviendrez. Vos commentaires sont importants pour nous, nous vous invitons donc à nous donner votre avis sur la qualité de nos services. Toute idée sur la manière dont nous pouvons améliorer l'expérience du port ou nos services est également la bienvenue. Bonne navigation. »

Keith Howorth, Capitaine du port

Harbour TEAM

Weymouth Harbour team has a passion for exceptional service

We are a busy team, carrying out a pretty diverse but exciting and enjoyable workload. Karen Womack and Simon Powell joined the team as Berthing Officers in 2015. Whether you're speaking to our Administration Team about annual moorings, the harbour website and marketing, or the Berthing Office Team as a visitor;

harbour staff are happy to assist with all of your berthing enquiries. Also on hand to assist you through the busy summer months are our seasonal staff members who work with the Berthing Office Team.

We strive towards the highest standards of customer service and regularly welcome customer feedback. Please do shout if there is anything we can do to help.

If you would like to contact a member of the team, you can do so via our website www.weymouth-harbour.co.uk via email weymouthharbour@dorset.gov.uk or call +44(0)1305 838423.

You can also keep up to date with Weymouth Harbour and the Harbour Team on our Facebook page.



Weymouth Harbour.





Weymouth Harbour Berthing

MOOR FOR LESS

Our Marina is in a superb location, offering excellent value for money. Berths benefit from being in sheltered waters, literally 5 minutes' walk to the town centre, and a short stroll around the historic outer harbour takes you to the beautiful golden beaches and safe bathing waters. It is truly a great and unique location.

As an annual berth holder you can enjoy free use of the grid and slipway and a reduced rate for town centre car park permits. Our attractive and easy payment options mean if you need to leave part way through the year (we hope that you don't!) there are no annual tie-ins, giving you the most flexible berthing package.

Short term temporary use of berths and winter berthing are also available.

If you need any information, please contact us: we look forward to welcoming you as a customer.

Moorings Officer (Mary) - +44(0)1305 838422.

mehorton@dorset.gov.uk.

Moorings Officer (Claire) - +44(0)1305 838379.

cflowers@dorset.gov.uk

*"Dorset coastline,
central base for
breaks"*



*"The Harbour
seems really nice with
great facilities"*



Visitor BERTHS

Join the bustling atmosphere in our vibrant harbour

We continue to build on the improvements to our visitor facilities in recent years and are delighted to receive some really positive feedback from the many visitors that we welcome each year. We are also continuing the successful Pocket Guide Loyalty Scheme, whereby visitors are able to obtain a free night's berthing.

Most visitor berths are alongside floating pontoons which creates a vibrant and friendly atmosphere in the harbour. Visitor berths are located both on the south and north side of the harbour as shown on the chart on page 11.

- Vessels up to 10 metres should berth on the south side of the harbour (the Cove).
- Vessels over 10 metres should berth on the north side, either opposite the Lifeboat station, adjacent to Weymouth Pavilion or outside the Harbour Office.
- Vessels over 18 metres, where possible advance notice of your arrival should give us an opportunity to try and make a suitable space.

Rallies and Events

Weymouth is a popular destination for visiting rallies and we welcome the opportunity to host your event. We aim to ensure your event gains maximum enjoyment both on and off the water and to create an opportunity for you to enjoy a relaxed, sociable atmosphere in the heart of the town. Discounts are available, please contact the Berthing Office on +44(0)1305 838423 for prices.



Entering & Leaving THE HARBOUR

Harbour Entrance

The harbour entrance lies between two piers. The main channel is indicated by red transit lights at night and diamond shapes by day on the South Quay bearing 239° 38'. The leading lights at the approaches to Weymouth Harbour are high intensity units with a range of 7.5 miles.

A conspicuous addition to the skyline of Weymouth Bay, which provides a useful aid to navigation, is the Jurassic Skyline. This white chimney-like structure is 55 metres high and has a people pod which can be seen ascending and descending from time to time. At night it is marked by flashing red hazard lights. It lies 200 metres west of the Weymouth Harbour entrance.

Traffic signals are displayed in a vertical line from a mast on the South Pier. When passage in or out of the harbour is restricted the signals will be operational and the lights must be observed.

Please see Reeds Nautical Almanac 9.1.28 for full details.

DEAD SLOW SPEED IN THE HARBOUR

The speed restriction requires that operators of craft to proceed at a speed whereby their wash does not cause annoyance to other harbour users.

Town Bridge

Mariners requiring bridge lifts should be within sight of the Town Bridge operator (on approach, the starboard side of the bridge) before the scheduled time listed, and listen on VHF channel 12 for Town Bridge information approximately 5 minutes before the scheduled lifting time.

Before entering the harbour, visiting vessels should contact Weymouth Harbour for berthing advice.

**Call sign "Weymouth Harbour"
on VHF channel 12**

Traffic Signals



indicates flashing light



Entry to harbour is clear with caution.



A vessel is LEAVING or is about to leave the pierheads area. No other vessel may approach the pierheads in such a way as to obstruct the pierheads area.



All vessels await instructions.



A vessel is APPROACHING the pierheads area from seawards. No vessel may leave that part of the harbour which lies west of the pierheads area.



Port Closed.
Entrance foul.
No vessel may enter the pierheads area.



A vessel may proceed only when it has received orders to do so.

The waiting pontoon on the port (south) side is available for inbound visitors. A fee may be charged if the next scheduled bridge is not used. Bookings for bridge lifts can be arranged by calling Weymouth Harbour on VHF channel 12 or by telephoning +44(0)1305 838423 (answer phone when not manned). Bookings in advance are required during the winter. Mariners are reminded that the traffic lights at the Town Bridge are to be obeyed by all vessels, regardless of size.

Bridge Lifting Times

15 April – 15 Sept inclusive:

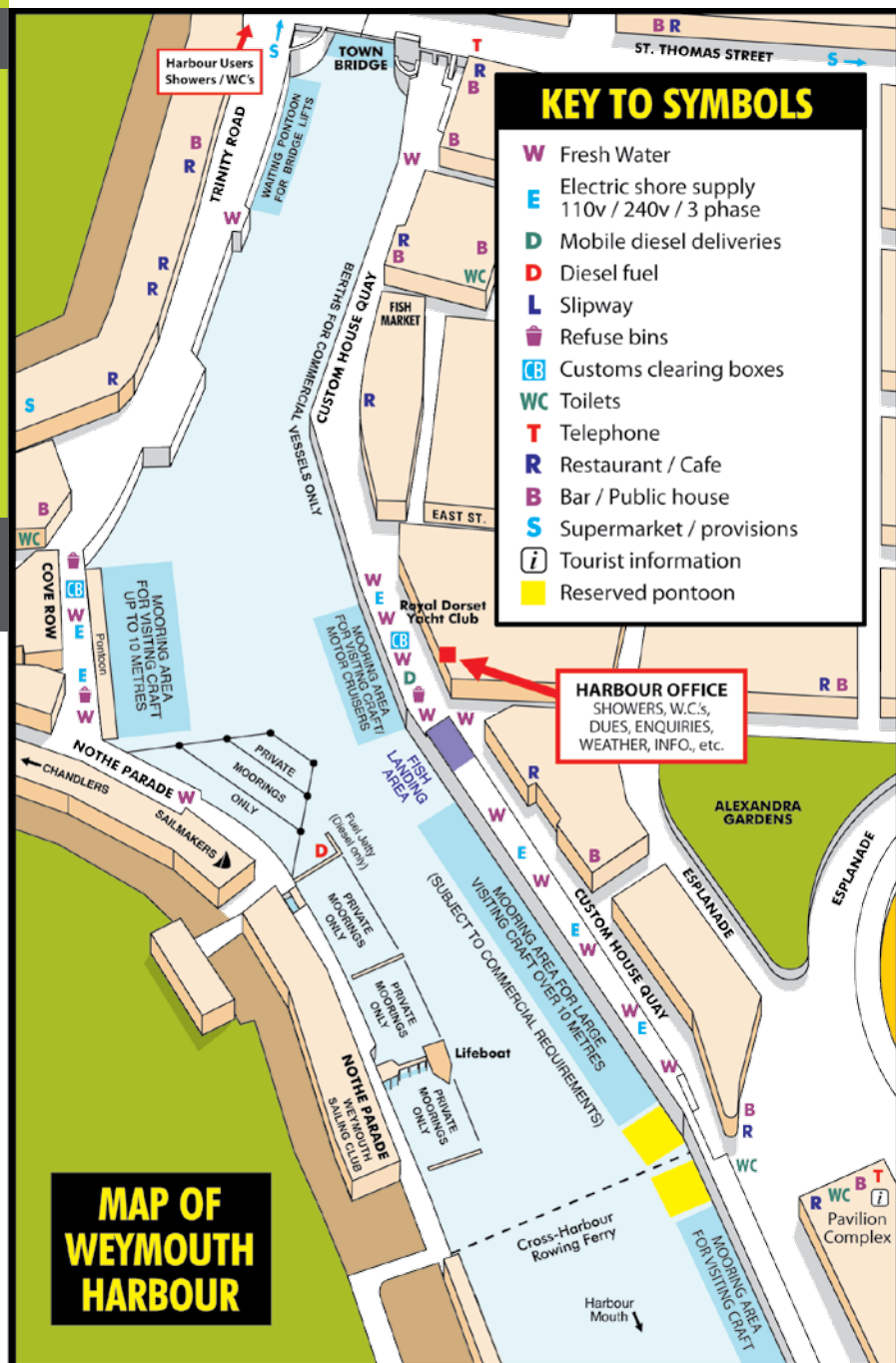
Every two hours from 0800 to 2000.
In June, July & August there's an additional lift at 2100.

16 Sept – 14 April inclusive:

Every two hours from 0800 to 1800.
A minimum of one hour's notice is required for lifts during this period.

Outer Harbour Berthing Chart

1. Before entering the harbour, please contact us on VHF12 for berthing advice. Call sign "Weymouth Harbour."
2. Vessels visiting during 'silent' hours should proceed to a suitable berth as shown on the Harbour map opposite. If a vacant berth is not available please berth alongside a vessel of similar length and type.
3. Fairway Position: Lat. 50° 36.72' N.
Long. 02° 26' W
Charts: 2172, 2255, 2268
Prevailing Winds:
West/South-westerly
4. Dead Slow Speed in the Harbour – if in doubt about your speed, look behind you, you may be surprised at the effect your wash is having!



Harbour FACILITIES

Reception/Harbour Office is open 7 days a week from 0730 in the morning until the last bridge lifts (high season until 2100). Opening times are posted on the harbour office door. You can also contact a member of the team on VHF Channel 12.

Showers are located on the ground floor of the harbour office and at North Quay (see chart on page 11). 24 hour access is available; a code to the door will be given to you on arrival.

Power and Water 240v electricity is available at visitor berths and most marina berths benefit from metered electricity. If you require electricity during your stay, there is a plug-in fee payable and extension leads are available to borrow. Water is available at all visitor and marina berths.

Laundry facilities are located on the ground floor of the harbour office. The machines are token operated, tokens can be purchased from the harbour team.

Weather forecasts are posted daily on the notice boards outside the harbour office.

Waste and Recycling Please recycle cans, bottles and paper by using the facilities opposite the harbour office. Household waste can be bagged and disposed of by using the wheeled bins adjacent to the harbour office. Batteries and oil can be collected and disposed of by a member of the team. Please do not place either in or by the wheeled bins as they become a magnet for vandals. If you see either beside the bins, please inform a member of the team and they will remove it. Likewise, if the bins become full, please contact us and we will arrange an appropriate alternative for you.

Notices to Mariners are displayed on the notice boards outside the harbour office and on the pontoons, and are also available to view on our website www.weymouth-harbour.co.uk. Any increased activity in the Harbour not requiring a notice to mariners can also be found on our website and Facebook page.

Fuel Diesel fuel is available from the jetty in the harbour and from mobile mini road tankers. Please check directory pages for local suppliers. The nearest petrol station is on King Street (see map on page 20).

Supermarket and Cashpoints In the town centre there is a Marks and Spencer, Co-Op and Tesco and a selection of delis. A 10-minute walk will take you to an Asda superstore. Cashpoints are located at both Tesco and Asda and other locations within the town centre.

Book Swap Lose yourself in a book while you wait for your laundry, swap one of your finished reads for one in our stock or simply take a book for your journey when you depart from Weymouth. Donations of books also gratefully received.

Wifi is available for some visitor berths opposite the Harbour Office, please ask a member of the team for the code.



Price LIST 2016

A full list of charges is available on the website

Visiting Leisure Craft

Short stay (30 minutes – 4 hours *(first 30 minutes free)*):

Vessels up to 6m LOA	£6.00
Vessels 6m – 12m LOA	£8.00
Vessels over 12m LOA	£12.00

Over 4 hours - up to 24 hours

(per metre or part metre unless otherwise stated):

1 April – 30 September	£2.60
1 October – 31 March	£1.80

Multi-hulls will be charged +20% of single hulled vessels

Electricity – plug in charge where available per 24 hours:

16 amp supply	£2.50
32 amp supply	£5.00
63 amp supply	£10.00

SPECIAL OFFER

4 nights for 3 – Any vessel staying for three nights will receive the fourth night free of charge (excludes July - August)

* T&C apply, especially in July and August.

Keep visiting our website

www.weymouth-harbour.co.uk to find out about our latest offers or sign up to our e-newsletter by emailing harbournews@dorset.gov.uk

Annual Mooring Fees

Marina berths *(per metre or part metre unless otherwise stated)*:

Craft owned by residents* of Weymouth and Portland Borough Council	£299.08
Craft owned by non residents	£332.30

(there are some twin berths available which will be charged at 80% of the resident or non resident rate)

Chain and sinker fees residents* only (per metre or part metre unless otherwise stated)

Tenders up to 3m	£16.51
Vessels over 3m	£66.46

Winter Storage Afloat

(per metre or part metre unless otherwise stated):

Pre-booked and paid for in advance 1 October – 31 March
(pro rata minimum 2 months)

Outer harbour – without electric	£66.00
Outer harbour – with electric	£90.00
10% surcharge for use of vessel at any time during the period of winter storage afloat.	

Extended stay where available; applies 1-30 April and 1-30 September

Without electric	£1.80
With electric	£2.00

*A resident is a person whose main home is in the borough of Weymouth and Portland Borough Council who is on the electoral roll and who is liable for full Council Tax.
(Prices correct at time of going to print)

SPECIAL OFFER

Pocket Guide Loyalty Scheme.

See your Weymouth Harbour Pocket Guide for more details.

Charming WEYMOUTH HARBOUR

Weymouth Harbour combines Georgian architecture and 17th century charm with all the facilities of a modern marina, whilst being at the hub of the town.

Food is at the heart of Weymouth's rediscovered buzz, with an excellent array of restaurants, pubs and cafes surrounding the harbour side. With local ales and much of the produce sourced from the surrounding Dorset countryside and coastline, visitors are spoilt for choice.

'A trip to Weymouth is a joyous time. The object is to enjoy the scenery, the sea, the food, the people and the soothing feeling as you traverse its many streets and walkways. For travellers in the UK it has been a must-visit destination for hundreds of years and should be for hundreds more.'



Portland Bill & PORTLAND RACES

When sailing west from Weymouth Harbour, it is suggested that craft are at Portland Bill 4 hours after high water Portland in order to gain the best use of the surrounding tides. Portland Bill is approximately 7 miles by sea from Weymouth Harbour entrance and due allowance must be made when planning departure time from here.

Portland Race can be a treacherous place and should always be avoided, particularly during spring tides, but with sensible passage planning the bonus of the tidal effects when running to the west can be considerable.

Approximate distances in nautical miles from Weymouth Harbour to places to visit:

LULWORTH COVE	7
WORBARROW BAY	10
PORTLAND HARBOUR	3
CHAPMAN'S POOL	15
RINGSTEAD BAY	3



Things to SEE & DO

The harbour is perfectly situated in the centre of Weymouth and is just a stone's throw away from all that the town has to offer.

Whether it's visiting the labyrinth of underground passageways at the historic Nothe Fort, taking in the fantastic views of the Isle of Portland from the peaceful Nothe gardens or just enjoying an ice-cream on the golden, sandy beaches that flank the town, Weymouth has a wide range of attractions to suit all.



The Rodwell Trail, once a railway line linking Portland to Weymouth, is ideal for walkers and cyclists. It leads to Ferrybridge and on to the stunning 17-mile-long Chesil beach. Behind the beach is the Fleet Lagoon, the largest saline lagoon in the UK and rich in marine species. With a number of cafes and bars en-route, this area is a must-see for the views alone.

If you climb the island of Portland you will see evidence of the quarrying of the famous Portland stone. Visitors can explore the now disused Tout Quarry, where sculptors from around the world have carved images in stone amongst the many paths.

No visit to Portland would be complete without visiting Portland Bill. During the summer months guided tours of the lighthouse are available at certain times, when it is also possible to climb the 153 steps.

Back in Weymouth itself, nature enthusiasts can enjoy some peace and tranquillity and see several species of duck and sedge warblers at the nearby RSPB reserve at Radipole Lake; and strolling further along the Esplanade you'll find Lodmoor RSPB reserve.

Those with a head for heights can enjoy the fabulous views seen from the 'Jurassic Skyline' soaring 53 metres above the ground. Its slowly revolving observation deck offers a panoramic vista of the beautiful West Dorset countryside.

You don't have to be a military enthusiast to enjoy the Nothe Fort, it's a great day out for all the family with lots to see and explore. Located at the entrance to Weymouth Harbour, the Nothe Fort is a labyrinth of underground passageways and outdoor areas with stunning views of the Jurassic Coast. Constructed on three levels, the Fort is filled with displays, mammoth guns and cinema areas that chart the history of this large and magnificent Victorian structure.

Weymouth offers a wide range of attractions for all the family. The Sealife Park and Pirate Adventure Golf can be found at Lodmoor; whilst the Pavilion Theatre, situated just off the harbourside, presents a year-round programme of shows. There's also tenpin bowling; Weymouth Swimming Pool and Gym; and a 9-screen cinema to keep you entertained if the weather turns grey.



YOUR CHANCE TO WIN UP TO
£20,000
EVERY DAY AT GALA BINGO

FREE MEMBERSHIP & ADMISSION

You'll love the buzz x





WE ARE HERE

**Weymouth Club, 18 Crescent St,
Weymouth, Dorset DT4 7BX.
Tel: (01305) 785180**

Terms and Conditions apply, please ask in club for details. Enjoy the game, please play responsibly.
www.gambleaware.co.uk. Need help?
Call GamCare free on 0800 802 0133.

Great Local Festivals & EVENTS 2016

From family festivals to sporting challenges to art and crafts, below are some of the great highlights from over 200 events taking place throughout Weymouth and Portland in 2016.

For the latest event news visit – www.visitweymouth.co.uk



27-28 February	The Dickies Weymouth Beach X
20 March	Weymouth Half Marathon
9-10 April	Portland Fish & Ships – visit our Weymouth Harbour stand
29 & 30 May	Fayre in the Square
3-5 June	Wessex Folk Festival
8-12 June	Sailing World Cup, WPNSA
18-24 June	Weymouth & Portland Armed Forces Day Celebration
25 June - 1 July	2016 Squib National Championships
9 & 10 July	Pommery Dorset Seafood Festival
29-31 July	Weymouth Beach Volleyball Classic
16-17 August	Weymouth Carnival
3 & 4 September	Waterfest Weymouth
11 September	Ironman Weymouth
15 & 16 October	Lions Beach Motocross
5 November	Guy Fawkes Celebrations
25 December	Christmas Day Harbour Swim

All events can be subject to change/cancellation due to weather/operational constraints and conditions. Please confirm event details on www.visitweymouth.co.uk before travelling.



TOWN MAP



To:
Dorchester,
Bristol,
London

To:
Preston,
Dorchester

To:
Portland, Bridport,
Jurassic Coast
(COASTLIX53)



KEY	
	Supermarket
	Parking
	Toilets
	Disabled Toilets
	Tourist Information
	Main Bus Stop
	Pedestrianised
	Main Shopping Areas
	Harbour Walk
	RSPB Nature Walks
	Rodwell Trail
	Slipway



Time to SHOP

Whether you need to stock up on holiday essentials or are looking for that distinctive gift, Weymouth has a large selection of retailers to suit your taste. And with the harbour being perfectly situated at the heart of Weymouth, all of this is within a short stroll from your boat.

Alongside the harbour you will find the local fish market, an angling shop, art galleries, gift shops and, of course, ships' chandlers.

St Thomas, St Mary and Bond Street are the trendiest places to be with high street fashion such as Marks and Spencer, Debenhams, Monsoon and Henri-Lloyd, quality jewellers and individual stores to delight in. While side streets such as St Alban Street offer individual boutiques and local shops supplying everything you would need for a day on the beach.

There are also plenty of coffee houses, cafes and bakeries, so why not take the weight off your feet and enjoy a fresh cream tea while you recharge in preparation for the next round of shopping!

Finally, there is the famous Weymouth Market held weekly on a Thursday down by the Swannery, where you're bound to pick up a bargain!





- CARS • 4X4 PICKUPS
- VANS • TIPPERS • TRUCKS
- MINIBUSES

book on-line for a discount

www.dorsetvehiclerentals.co.uk

or call Central Reservations free on **08000 51 52 53**

UPWEY SERVICE STATION 727 DORCHESTER ROAD, UPWEY, WEYMOUTH DT3 5LF

Branches Also At Bridport, Dorchester, Gillingham, Yeovil & Wincanton

Cove Gallery

On the harbourside

We are passionate about the art and gifts that we stock at Cove Gallery and we take great care to personally select paintings, glassware and ceramics created here in Dorset by local artists wherever possible.

So, when you are alongside, come and pay us a visit in Trinity Street on the south side of the harbour.



01305 767025 | www.covegallery.co.uk



Time to EAT

Weymouth offers an outstanding assortment of dining experiences: from traditional Dorset cream teas to fine dining, there are eateries to take you through the whole day, from breakfast to dinner and to suit any palate. All of these are just a stone's throw from your mooring or a short stroll into the town.

As you would expect from an historic harbour there are plenty of pubs alongside, and with most offering good food throughout the day, visitors are spoilt for choice.

Fish features highly on many menus and with some of it landed right on the doorstep it couldn't be fresher. Look out for hand-dived scallops or local lobster, and oysters grown at the Fleet, just a mile or so away, are another must-try.

The continental feel along the harbour continues into Hope Square, with outside seating providing alfresco dining under open sun parasols, while hanging baskets brim with stunning flowers.

Amble along the side roads off the harbour and you'll find Weymouth's popular Italian, Indian and Chinese restaurants, as well as a host of coffee shops, fast food outlets and small cafes serving traditional British fare.

Relax on deck and enjoy the town's atmosphere whilst you sample traditional fish and chips from one of the nearby takeaways, then sit back and watch the surroundings as the scene transforms on and off the water.

To search for Dorset eating establishments visit www.visit-dorset.com/food-and-drink






Rate us on  **Winners 2015**
tripadvisor


- Monthly Specials
- Vegetarian Meals
- Children's Menu
- Families Welcome
- Gluten Free
- Parties & celebrations catered for
- Licensed

Weymouth's popular traditional fish & chip restaurant and take away situated in the town centre and close to the beach and pretty harbour

Open all day every day

9 Market Street, Weymouth DT4 8DD
T: 01305 766386
www.fishnfritz.co.uk






Galley Bistro

Hope Square, Weymouth
Tel: 01305 784059 | www.thegalleybistro.co.uk

Situated in the heart of Weymouth's Old Harbour the Galley bistro is a family run restaurant, with a cosy authentic feel.

Open daily for breakfast, lunch, and evening meals where an extensive specials board of fresh fish and grills is available. Also carvery on sundays from midday.




Established 1974

10% OFF

All restaurant & take-away meals on production of this guide

Open All Day 7 Days a Week
Visit the Marlboro for the very best in take-away food and Fish and Chips, or take a seat in our popular and friendly restaurant.
Gluten free options available (Mon-Thurs) out of season (please ask).



46 St Thomas Street, Weymouth (Near Town Bridge) Tel: (01305) 785700



*** DINING ROOM ***

STEAKHOUSE

WEYMOUTH


HOME OF THE TOMAHAWK

67 ST MARY STREET WEYMOUTH DT4 8PP | TEL: 01305 783008
WWW.DININGROOMSTEAKHOUSE.CO.UK




No 4

4 Trinity Road, Weymouth DT4 8TJ
www.no4.restaurant | 01305 780010



FISH • STEAK • MOULES
Eat | Drink | Celebrate
'Local Seafood a Speciality'

Exclusive dining room available

WATERFEST WEYMOUTH

Waterfest Weymouth will be back with a splash on 3rd & 4th September 2016 in and around Weymouth Harbour.

This FREE festival celebrates Weymouth's maritime heritage with sailing, diving, maritime crafts, seafood and shanty music which, in 2016, will include Weymouth Regatta and 'TS Pelican' offering day sails in the tall ship around the bay.

This year we also welcome 'Excelsior', the fully restored 1921 fishing smack to join 'Le Marité', the last three-masted Newfoundland schooner, in the line up of heritage vessels

alongside state-of-the-art P2000 Navy patrol boats, with the opportunity for visitors to go aboard.

The spectacular flyboarding displays that entertained the crowds last year will be back, and Captain Jack Sparrow will be gallivanting around the harbour to add to the lively mix of shanty music and delicious fare from one of the many stalls selling quality seafood - from local crab to mussels and lobster.

Waterfest is supported financially by the Weymouth BID and delivered by Roger Dalton Associates in conjunction with event sponsors.

For more information visit www.weareweymouth.co.uk/Waterfest



/waterfestWeymouth



@waterfestWey



WEYMOUTH
WEAREWEYMOUTH.CO.UK

LOCAL BUSINESS
SUPPORTING
WEYMOUTH



Pommery Dorset SEAFOOD FESTIVAL

A highlight of Weymouth and Portland's event calendar and a weekend not to be missed is the Pommery Dorset Seafood Festival. A wonderful free-to-attend event that attracts over 50,000 visitors each year, be sure to catch the 2016 festival taking place around the harbour on 9 & 10th July.

With over 100 stalls, you can spend a leisurely two days meandering around the festival, feasting your eyes and bellies on an enticing array of delicious seafood and amazing champagne, whilst getting the culinary know-how from celebrity chefs.

This award-winning festival scooped two major awards at the Dorset Tourism Awards 2015: Gold for 'Tourism Event of the Year' and the 'Outstanding Contribution to Dorset Tourism'. And to top the celebrations, 2015 also saw them raise £8,000 for their charity partner, The Fishermen's Mission.

For more information visit www.dorsetseafood.co.uk

CHAMPAGNE
POMMERY
REIMS FRANCE

**DORSET
SEAFOOD
FESTIVAL**

FABER
France

04 32 28 41 40 20
www.faber-france.fr

King GEORGE III

George, even as King, was a man of his people and would often engage in conversations with the farmers of wherever he happened to be. He had a strong interest in agriculture and helped with the running of his own farms at Windsor and Richmond. When he visited the West Country, where agriculture was the way of life for most, he did likewise there. He became a very popular king and was greatly respected.

King George made his first visit to Weymouth in 1789. Being a man of poor health and suffering from porphyria, the benefits of the salt water of the sea were being extolled by the physicians of the day. So using one of the first bathing machines of the time, King George took a dip in the bay. The bathing machines were designed as mobile changing rooms and could be wheeled into the water to allow discreet entry into the sea. As King George emerged from the water, a band played "God Save the King".

Enjoying Weymouth regularly, after a few vacations King George purchased Gloucester Lodge on the Esplanade from his brother the Duke of Gloucester as his holiday home. Gloucester Lodge eventually became a hotel before being converted to luxury apartments.

In Osmington the chalk figure carving of a horse and rider in the hillside is said to depict that of King George III. However the king was said to be unhappy that the carving was formed in the direction of riding away from Weymouth.

In 1810, a permanent reminder of George III was established in Weymouth with the erection of a statue of the King at the junction of the two main streets of the town, St Mary Street and St Thomas Street. This was to show the town's appreciation of how he had established Weymouth as a major seaside resort.



Weymouth TOWN BRIDGE

Since 1597 four bridges have stretched across the river Wey to unite the towns of Weymouth and Melcombe Regis, with the current bridge replacing its predecessor as it only allowed small vessels to pass through and the opening machinery was thought too slow.

Using the services of consulting engineer Mr H Fitzsimmons of Westminster, contractors Messrs Bolton and Lakin, Birmingham, and the Cleveland Bridge & Engineering Company, Darlington, and constructed by men recruited from the unemployed of Weymouth and surrounding areas, the £90,000 bridge was opened on 4th July 1930. This historic event was marked with a grand opening ceremony performed by HRH Duke of York, who later became King George VI, and the first passage through the bridge was made by the paddle steamer EMPRESS, owned by local company, Cosens & Co.

Designed for occasional use to allow larger vessels into the backwater for maintenance, today the bridge is scheduled to lift 363 days of the year.

A twin-leaf, bascule-type bridge, each leaf weighs over 200 tonnes and is 'moved' by a small DC motor and gear train on each bascule, with each having a counterbalance ballast weight. This is also used to control the wedges, which 'lock' the leaves in place when the bridge is raised or lowered.

To open, the leaf is rolled along the fixed gear and using the counterbalance weight the leaf then starts to tilt. Brakes are then applied when it is fully open. In the raised position the entire ballast counterweight fills the bascule pit and excess rain water runs directly into the harbour.

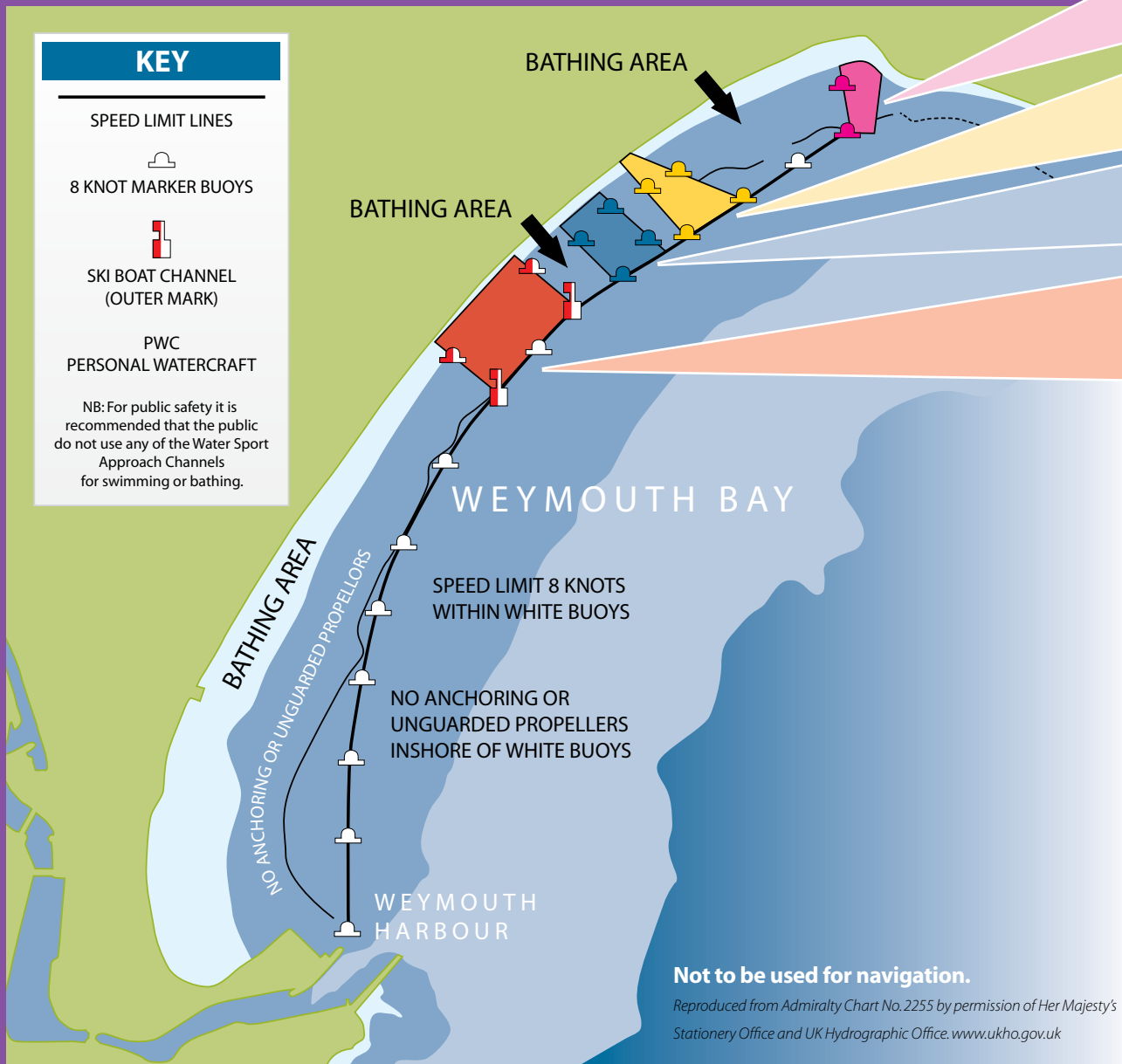
Formerly it was raised by hand winches, one on either side of the mechanism, on both the north and south leaf. These are also believed to have manually operated the 'wedges' too. Today's operating system on lifting the Town Bridge is done in a sequence whereby buttons are pressed on a lower control panel, with each button having a specific function, from operating the waterway traffic signals to raising the leaves and barriers, and if a step is missed the bridge will not operate.

The mechanics of the bridge are largely original; electrical components have been updated and a great deal of work has been carried out in recent years to replace and upgrade obsolete parts.

The addition of a lighting system, which illuminates the bridge at night, showcases the magnificence of this 85-year-old wonderful piece of engineering.



Weymouth Watersports Access Zones



PWC Lane

Entry / exit lane ONLY, designated for PWC. Please note that there is a 5mph limit at the shore end of the zone.

Sailboard Approach

This channel is for sailboards only. No other vessels should enter this lane at any time.

Anchoring Zone

This zone is designated for anchoring vessels. When proceeding to this zone, please keep to the **8 knot limit**.

Ski Boat Approach

This channel is only for vessels to gain access to the beach to pick up water skiers. Water skiing activities should be kept seaward side of the white 8 knot buoys.

Weymouth Bay Safety Instructions

- All craft should mainly keep to seaward of the white buoys across Weymouth Bay.
- Do not enter and/or attempt to anchor in the bathing areas shown on the map. Propellers and anchors could seriously injure bathers, therefore, common sense and good seamanship dictate that navigation and mooring in bathing areas should always be avoided.
- The water-skiing channel, marked by red and white buoys, is only suitable for water-ski craft to gain access to the beach. Once passengers and water skiers have been collected from the beach all water ski activities should take place seaward of the white buoys.
- Harbour byelaws require water ski boats to have at least two people in the boat whilst engaged in skiing, thus allowing one person to act as lookout astern.
- The jetski channel (marked by red buoys) must only be used to gain access to the beach. After launching, all jetski activities should take place seaward of the white buoys.

Water Sports Permits

A permit is required for any powered aquaplaning activity in Weymouth Bay, including personal water crafting (jet-skiing), waterskiing, wakeboarding and the towing of donuts etc.

Permit Fees

Per Day	£8.50
2 Day (must be consecutive days)	£14.00
Per Week	£26.00
Annual (from Harbour Office only)	£75.00*

*RYA PWC certified £50.00

Permit application forms are available from the Harbour Office and should be returned there when completed. For details of launch sites for PWCs (jet-skis) please contact the Harbour Office. Please note: Portland Harbour is subject to regulations set by Portland Harbour Authority – contact +44(0)1305 824044 for details.

Boat Launching Facilities

(contact the Harbour Office for more details)

- Weymouth Inner Harbour
- Bowleaze Cove, Weymouth
- Overcombe Corner, Weymouth (windsurfing and kayaks only)
- Castletown, Portland
- Ferrybridge, Portland Road

Weymouth Inner Harbour Slipway Fees

Launch and Recover per Day	£10.00
Annual Permit (launch only)	£130.00
Trailer Park per Day	£6.00

(Prices correct at time of going to print)

The Jurassic COAST

Declared a Natural World Heritage Site in 2001 and stretching from Orcombe Point, East Devon to Old Harry Rocks, East Dorset, the Jurassic Coast provides 95 miles and 185 million years of Earth history. The stunning coastline spans the Triassic, Jurassic and Cretaceous periods and its entire length can be walked on the South West Coast Path.

To the east of Weymouth there are interesting walks and beaches where you can see the fascinating changes in the rocks, from erosion and fossilised burrows to ancient marine animals, which you don't have to be a geologist to enjoy! Children can imagine the tropical seas and dinosaur infested swamps that once covered the land, trace fossils around Osmington Mills and, if you're lucky, see dinosaur footprints and trackways in Purbeck.

The famous arch of Durdle Door is one of the Jurassic Coast's well known landmarks, and at Lulworth Cove an extraordinary Fossil Forest can be seen on the cliff edge to the east. The

'doughnut-shaped' structures were made from trees that once grew and were then submerged in swamps.

Above the Fossil Forest lie the Purbeck Beds, a series of rocks that formed when conditions were harsh and hot and where dinosaurs once roamed. Chesil Beach, with the Fleet behind it, is one of the finest barrier beaches in the world and there are still debates over its formation today. The shingle banks link the mainland to Portland, where old quarries provide a glimpse of the historical Portland stone workings.

At the start of the Jurassic period a massive rise in sea levels around the world flooded the Triassic landscape. Marine life flourished and spiral-shaped ammonites and squid-like belemnites were chased by ichthyosaurs, dolphin-like reptiles that could reach up to 8 metres in length. The beaches around Lyme Regis and nearby Charmouth are world famous for fossils.

One of the most dramatic sights along the Jurassic Coast are the stacks at Ladrham Bay, East Devon. The stacks were formed from caves that over time were hollowed out by the sea, they then became arches which eventually collapsed, forming the stacks we see today. The red colour of both the stacks and the cliffs is due to iron minerals that have weathered over time, telling us that the land was once a hot desert area. For more information on this important coastline go to www.jurassiccoast.com



Lulworth Ranges

Danger Area

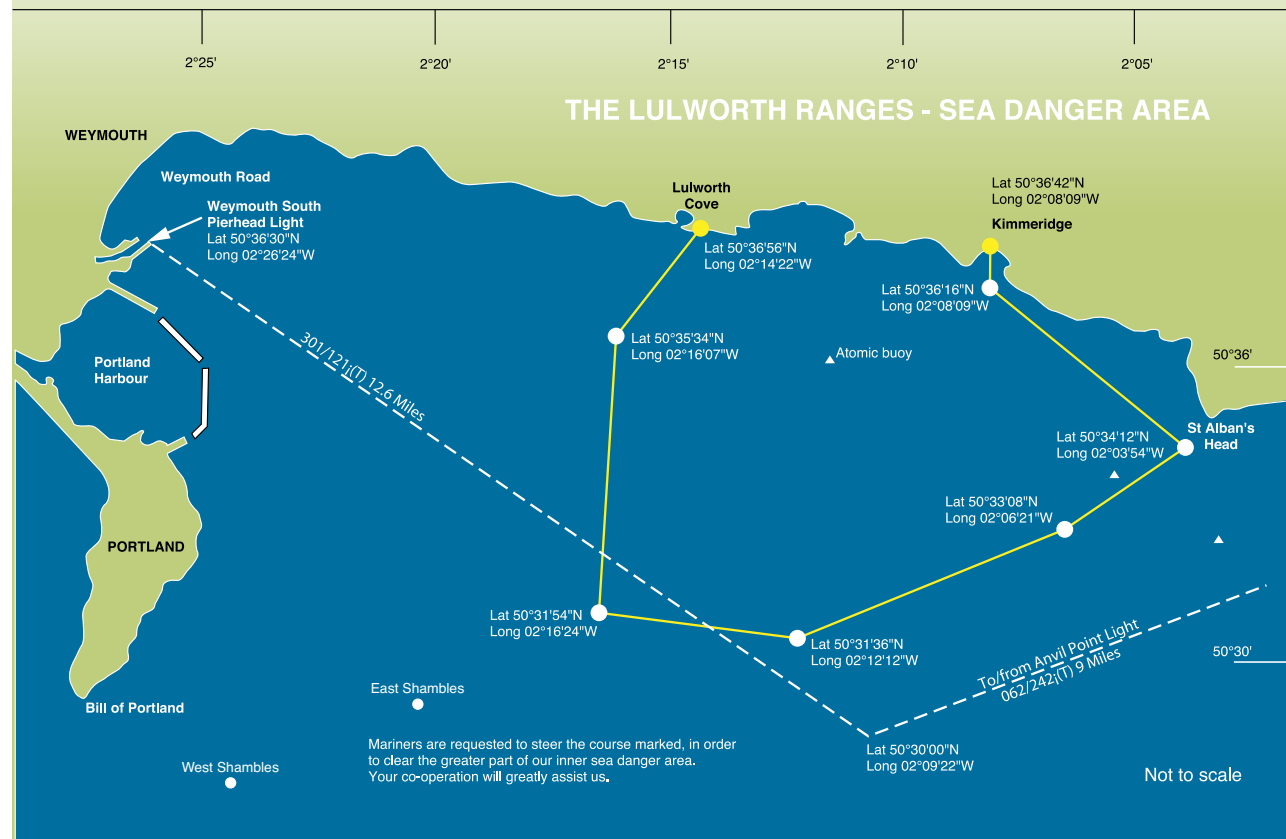
HM Forces train on the Lulworth Ranges and much of this training involves the firing of weapons. During firing times avoid the danger area identified on the chart below.

Normal firing times are:

Monday-Thursday: 09.30 – 17.00
Friday: 09.30 – 12.30

Exact details of the firing programmes, including weekend and night firing times, are displayed in the Harbour Office. The Lulworth Range Control listens on VHF Channel 8 but also, during firing, range safety boats are on station and listen on VHF Channels 8 and 16. When approaching the area, call range safety craft on VHF Channel 8 to get advice on safe direction and clearance.

For further information and weekend firing times, please contact Range Control on +44(0)1929 404712 during working hours and +44(0)1929 404819 outside of those hours.



Situated in the heart of the Jurassic Coast, England's first natural World Heritage site, Weymouth is the perfect base from which to explore this spectacular coastline.

A short cycle ride westwards around the Nothe Fort and headland leads to the eastern end of the magnificent Chesil Beach. This shingle bank is one of the finest barrier beaches in the world, linking the Isle of Portland to the mainland and forming a shallow, tidal lagoon known as the Fleet. Exploring the Fleet leads to the swannery at Abbotsbury, the only place in the world where you can walk amongst nesting swans.

Further afield are the picturesque harbours of West Bay and Lyme Regis. The Victorian village at West Bay is perfect for those visiting with families, with plenty to do such as crab fishing in the harbour.

Renowned for its fossils, its literary links and instantly recognisable harbour wall known as 'The Cobb', it is clear to see why the charming town of Lyme Regis is known as the "Pearl of Dorset".

Visitors' moorings are available at both West Bay and Lyme Regis harbours; their contact details can be found on page 39.

HEADING West



HEADING East

To the east lies the famous arch of Durdle Door and the picturesque Lulworth Cove. Formed around 140 million years ago by the erosion of softer rock behind the hard Portland limestone, Durdle Door is perhaps the most iconic landmark on the Jurassic Coast. At the foot of the arch lies a sweeping beach that has been used extensively in film and television.

A short hop eastwards leads to the beautiful Lulworth Cove. Its calm, sheltered water is in contrast to the wild surrounding coastline, it's here you will find the world famous Fossil Forest. The rugged cliffs offer rewarding walks with breathtaking views of Weymouth and Portland back across the Lulworth Banks.



The Community SEAGRASS INITIATIVE

Seagrass is an extremely important habitat for marine life and is home to a rich variety of amazing animals, including seahorses. They also provide many vital services to coastal communities, including being nursery areas for many commercial fisheries species.

Worldwide, seagrass habitats are in rapid decline. Threats like poor water quality and physical disturbance of these sensitive habitats are all contributing factors.

The Community Seagrass Initiative is engaging volunteers to help monitor the health and biodiversity of seagrass beds, with sailors, kayakers, divers and even internet users all being encouraged to take part. The aim is to reduce disturbance of seagrass habitats through raising awareness about these special places.

Our Sailing into Science volunteering programme asks boat users to help us gather vital data on water clarity around seagrass beds. Volunteer Citizen Scientists need no previous experience as all training and equipment is provided- including an Admiralty-style chart of the Weymouth and Portland area showing seagrass locations.

To get involved as a volunteer or to find out more about the work being carried out by the Community Seagrass Initiative in the Weymouth area, please contact the Weymouth project officer, Jessica Mead, on jessica.mead@national-aquarium.co.uk or 01752 680100 option 3.

safety

General

All vessels should hold appropriate third party insurance cover of £2,000,000 minimum.

Large vessels occasionally operate within the harbour. Their powerful thruster units and feathering propellers often cause turbulence that can be hazardous for smaller craft – please keep clear at all times.

It is illegal and dangerous to proceed against traffic signals, which are often used during the manoeuvring of large vessels.

Small rowing ferries operate across the harbour in summer (see chart on page 11) please give way to them, giving them a wide berth at a slow speed.

Please store all petrol aboard in metal containers and place adequate fire fighting equipment in position to deal with engine and cooking appliance fires.

Weather

Always check weather conditions before leaving the harbour.

A notice board indicating the latest inshore waters forecast is displayed outside the Harbour Office (see chart on page 11).

An initial announcement for full information broadcasts at 0730 and 1930 are made on VHF CH16 (and MF 2182 KHZ) indicating which VHF channel and MF frequency to listen to. There is then a local information broadcast providing weather messages, gale or strong wind warnings and shipping forecasts for Portland (Selsey Bill – Lyme Regis, Lyme Bay channel VHF 86 and South & East channel VHF 84) every three hours:

0730 1030 1330 1630 **1930** 2230 (UTC)

Pre-planning

For long voyages, please notify the Maritime & Coastguard Agency. For all shorter trips it is advisable to let a friend or relative know what you are doing and when you expect to return.

Coastwatch Portland Bill

The Portland Bill Surveillance Station was opened by the National Coastwatch Institution in 1997. Some 40 volunteers maintain watches over Portland Bill, the Portland Race, Weymouth Bay and Lyme Bay from 0700 – 1900 every day of the year. The station relies entirely on voluntary contributions and is there for your safety. More information is available at the Harbour Office.

RNLI ADVICE ONBOARD

Every year the lifeboats respond to an increasing number of incidents, many of which could have been prevented with simple safety precautions.

Make your boat as safe as possible by booking a free RNLI Advice Onboard check.

What is Advice Onboard?

This free, friendly and confidential service looks at the safety aspects of your boat. Conducted by a highly trained volunteer, Advice Onboard is a personal, face-to-face safety advice service that takes place onboard your craft. Visits are tailored to your vessel and the type of boating you do and include:

- a free, independent discussion on boat safety equipment
- an opportunity to discuss safety matters, tapping into a wealth of knowledge and experience
- a sticker showing your support for the scheme
- a copy of the completed form, which is a written summary of the main points discussed.

The whole Advice Onboard service is free. The service is available in all parts of the UK and the RoI, at your convenience and to anyone who goes to sea in almost any type of leisure craft.

For more information or to book a session visit rnli.org/safety/respect-the-water/face-to-face.advice/pages/advice-on-board.aspx



yacht Clubs OF WEYMOUTH

YCW is the umbrella organisation for: -

- Royal Dorset Yacht Club
- Royal Naval Sailing Association (Portland)
- Castle Cove Sailing Club
- Weymouth and Portland Cruising Association
- Weymouth Sailing Club

It co-ordinates the activities of these clubs and organises larger events that are outside the scope of an individual club, especially the Weymouth Regatta and major championships.

Royal Dorset Yacht Club

Situated on Custom House Quay, near the Harbour Master's Office, the club welcomes visiting yachtsmen and women to its first floor clubhouse, which has stunning views over Weymouth Harbour. There's excellent food and a well stocked bar featuring local real ales. Open daily throughout the summer.

T: +44(0)1305 786258

E: info@royal-dorset.com

W: www.royal-dorset.com

Address: 11, Custom House Quay, Weymouth DT4 8BG

Castle Cove Sailing Club

Castle Cove Sailing Club is a thriving, long established, family club, based in Portland Harbour and run by members for members. The club is situated at the end of Old Castle Road, Weymouth and visiting yachtsmen and women are always welcome. During the summer, on race nights, the bar and galley are open and, with notice, both can be made available at other times. For information please contact the club:

T: +44(0)1305 783708

W: www.ccsc.org.uk

Weymouth Sailing Club

With excellent food and a very good bar, not to mention the view of the harbour, the Club is open to all visiting yachtsmen and women, please check opening times.

T: +44(0)1305 785481

E: mail@weysailclub.org.uk

W: www.weysailclub.org.uk

Address: Nothe Parade, Weymouth DT4 8TX

Weymouth and Portland Cruising Association (WPCA)

The Weymouth and Portland Cruising Association was formed in 1984 to meet the needs of sailing and motor boat owners who wanted to cruise in company and meet like-minded seafarers. We meet every Tuesday evening at Castle Cove Sailing Club for a social get-together or visiting speaker's talk. Visiting yachtsmen are made very welcome. We have a number of swinging moorings in Portland Harbour available for members. For more details contact Michael Gregory:

T: +44(0)1305 889165

E: info.wpcruising.org@gmail.com

W: www.wpcruising.org.uk



useful Information and contacts

When dialling from outside of the United Kingdom, please use the international dialling code +44.

Non-Emergencies

Doctors	01305 774466
Dentist.....	01202 854443
Dorset Police.....	01305 222222
Weymouth Hospital.....	01305 760022

Port & Customs

Port Health Authority	01305 838432
HM Customs Advice Line.....	0845 0109000
HM Customs Yacht Arrivals & Departures.....	0845 7231110
Portland Port.....	01305 824044

Nautical

Weymouth Harbour Office	01305 838423
Castle Cove Sailing Club	01305 783708
Dean & Reddyhoff, Weymouth Marina	01305 767576
Royal Dorset Yacht Club.....	01305 786258
Weymouth Sailing Club.....	01305 785481
Condor Ferries	0845 6091024
Coastwatch Portland Bill	01305 860178 / VHF Channel 65
Weymouth & Portland Cruising Association	01305 889165

Taxis

Bee Cars	01305 769900
Fleetline	01305 777333
Wayline	01305 777777

Cycle Hire

Weymouth Bike Hire.....	07973 751393
-------------------------	--------------

Public Transport

First.....	0870 0106022
National Rail Enquiries	08457 484950
South West Coaches	01305 823039
Traveline	0871 2002233

Buses to Portland leave from a bus stop at the King's Statue. Services to Dorchester, Abbotsbury and Bridport depart from bus stops on the Esplanade (see map on page 20) A regular double-decker bus service (COASTLINX53) travels the Jurassic Coastline, allowing passengers to hop on and off at any of the stops along its route between Poole & Exeter.

The railway station is situated in King Street. Trains depart for London twice hourly (via Dorchester, Bournemouth & Southampton) and for Bristol (via Dorchester and Yeovil Pen Mill) several times each day.

Small ferries leave Weymouth Harbour for Portland Castle, Marina and Weymouth & Portland National Sailing Academy. Please call 01305 785000 or visit www.coastlinecruises.com for details.

West Bay Harbour

Telephone no.	01308 423222
Mobile.	07870240636
VHF Marine Channels 16 & 11 (Listen & Work)	

Lyme Regis Harbour

Telephone no.	01297 442137
Mobile.	07870 240645
VHF Marine Channels 16 & 14 (Listen & Work)	

Useful Websites

www.weymouth-harbour.co.uk
www.dorsetforyou.com/weymouthandportland
www.visitweymouth.co.uk
www.waterfrontweymouth.co.uk
www.jurassiccoast.org
www.dorsetseafood.co.uk
www.visit-dorset.com/food-and-drink
<http://rnli.org/Pages/default.aspx>

Marine Services

AND SALES

The marine service industry has always had a strong presence in the borough of Weymouth and Portland, and an increasing number of businesses are available to cater for all your chandlery needs.

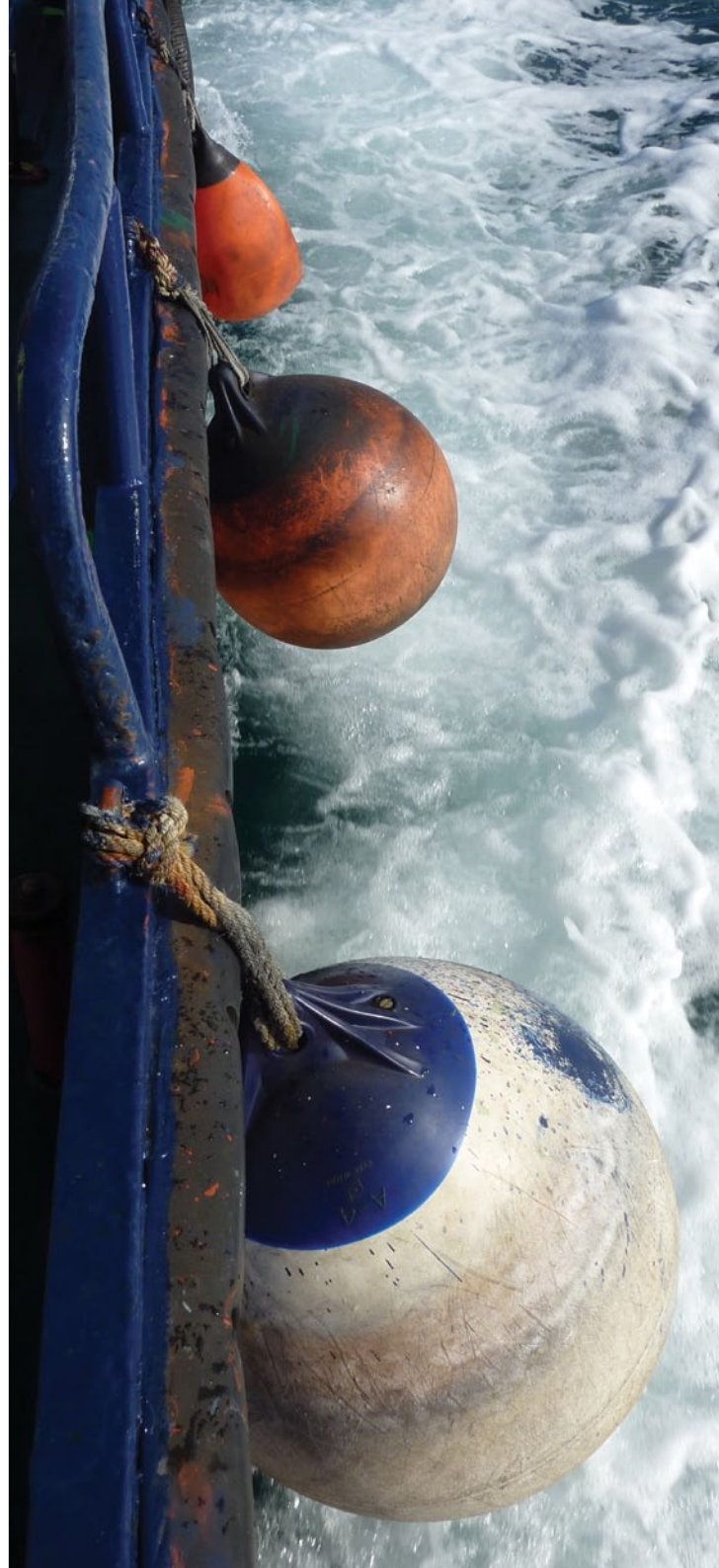
Following the departure of the Royal Navy from Portland in 1995, the waters around Weymouth & Portland became a magnet for sport divers, windsurfers and leisure craft owners as space was created to build on the existing water sports activities. Interest has continued to grow in this thriving sector of the local economy.

Osprey Quay is home to a number of large marine industry employers and companies such as Sunseeker have invested heavily in the area; for example, their luxurious motor yacht 'Predator 108' - as featured in the Bond movie 'Casino Royale' - was built at Osprey Quay in Portland after the company developed new manufacturing facilities there.

The 600 berths provided by Osprey Quay in addition to the 800 or so berths in Weymouth no doubt provide a sizable source of trade for those in the marine leisure sector.

The South West Regional Development Agency investment in the regeneration of the former Royal Naval Air Station at Portland which includes the development at Osprey Quay, a low carbon housing project and a training centre for the Royal Yachting Association, are just a few of the schemes that continue to create jobs and add momentum to the rapidly expanding local marine industry.

The following pages offer a selection of businesses able to assist readers with everything from chandlery, sail making and engineering to insurance and yacht brokerage.



Ocean Electric LTD
MARINE & COMMERCIAL

info@oceanelectrics.co.uk | Tel: 07968139570
www.oceanelectrics.co.uk
UNIT 10, PORTLAND MARINA, OSPREY QUAY,
PORTLAND, DORSET DT5 1DX

ELECTRICAL/ELECTRONIC SALES, INSTALLATIONS AND SERVICE

- Marine Electrical & Electronic Installations
- Commercial Electrical Installations & Maintenance
- Marine Electronics
- Service & Repairs
- Raymarine Authorised Dealer



YACHT
BROKERAGE

www.coveyachts.co.uk
sales@coveyachts.co.uk
07975 521792

The professional brokerage choice for Weymouth and Portland



- Widest selection of used boats in the area
- Honest, reliable and customer centred
- Stunning Portland Marina location
- Finance and insurance arranged
- Highly competitive rates for sellers
- Extensive print and internet advertising
- Proactive in getting your boat sold



Unit 12A Portland Marina, Osprey Quay, Portland, Dorset DT5 1DX

BHmarine

Super Yacht Training, Own Boat Tuition,
Yacht Service Management, Boat Deliveries

07515 663799

WWW.BHMARINE.CO.UK



Clark's BOATWORKS LTD

CROWN WHARF, 1 - 5 CASTLETOWN, PORTLAND DT5 1BD

- Boat storage with facilities
- Commercial & leisure boat repairs
- Traditional wooden boat restoration specialists
- Complete refitting & refurbishments undertaken
- Building of all types of boats & yachts
- Osmosis Centre
- Routine maintenance work



**LONGEST ESTABLISHED LOCAL BOAT BUILDER
A FAMILY RUN BUSINESS WITH THE PERSONAL TOUCH**

Tel: 01305 860 265 • Tim: 07836 314 025 • Jerry 07879 894 688 • Ryan 07887 875 691

www.clarksboatworks.co.uk



moatt sails
TEL: 01305 824254
MOB: 07833 383 221
not just a sailmaker

EMAIL: SKMOATT@BTCONNECT.COM



- NEW SAILS AND REPAIRS
- WINTER OVERHAULS
- LAUNDRY
- COVERS, CANOPIES AND SUN SHADES
- STORAGE

INNOVATION, PROBLEM SOLVING & QUALITY PRODUCTS

UNIT 23 NAVIGATOR BUSINESS PARK, OSPREY QUAY, PORTLAND, DT5 1PY

Sail Maker

A.D. GORDON

MODERN & TRADITIONAL YACHT RIGGING (PORTLAND)

Authorised Seldén dealer • Z Spar sparring partner
Hand splicing in Wire and Rope

N.D.T. Rigging Terminal Testing • Commercial Rigging
Talurit Splicing • Roll Swaging

MARLOW ROPES

Tel/Fax: 01305 821569 Mobile: 07774 633419 Email: adgrigging@talktalk.net

DAN STUTTLE MARINE SERVICES

Marine engine sales, service, repairs, spares, & new installations. **BETA MARINE SALES & SERVICE**

Marine Workshops, Cove Passage,
Cove Row, Weymouth, Dorset DT4 8TT
(Just behind Bussells Chandlers)

Mobile 24h : 07973 325 180
dan.stuttle@gmail.com





MECHANICAL SERVICES

An ISO 9001 Accredited Company

Service & Repair for all major makes of Leisure and Commercial Yachts & Motor Boats

Diesel Pontoon & Tanker

(opposite Harbour Office)

Fuel: 01 305 34 2012



VOLVO PENTA

Authorised Dealer & Service Agent

YAMAHA
Outboards

Phone: 01 305 779 379

www.mechanicalservicesltd.co.uk

NINETEEN | Mereside | Osprey Quay | Portland | Dorset DT5 1PY

LIFERAFT HIRE • LIFERAFT & DINGHY SERVICING

"You have got to admit, Premium really look after their customers"

Send for our FREE info pack and depot list



0800 243673

info@liferrafts.com

www.liferrafts.com

All kinds of safety equipment available at competitive prices.



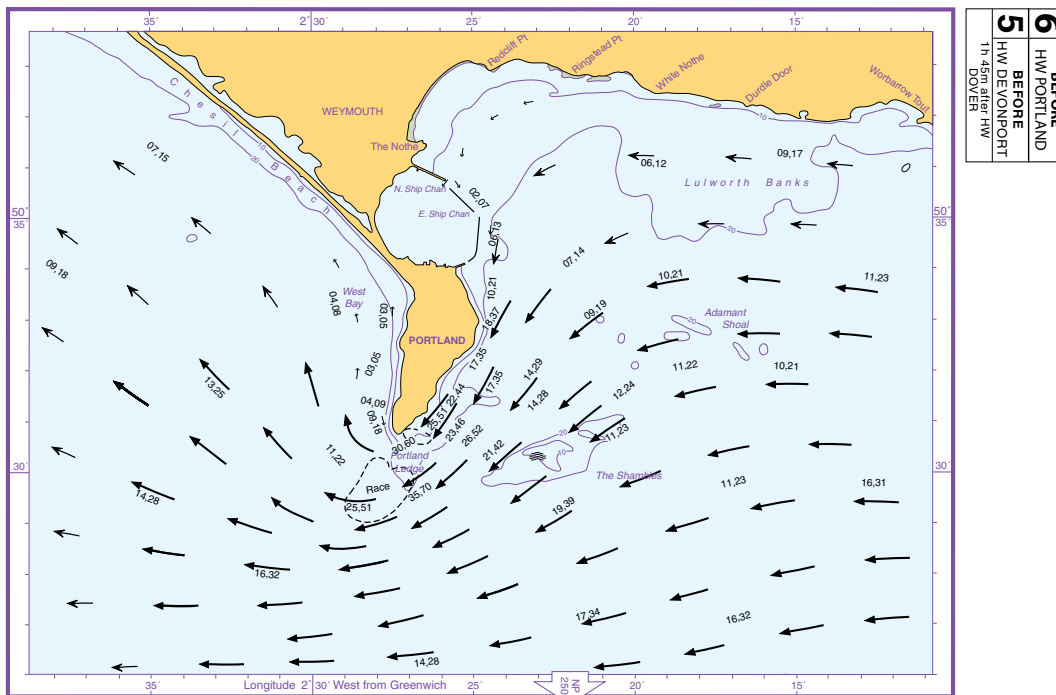
Liferaft House, Burnham-on-Crouch, Essex. CM0 8TE

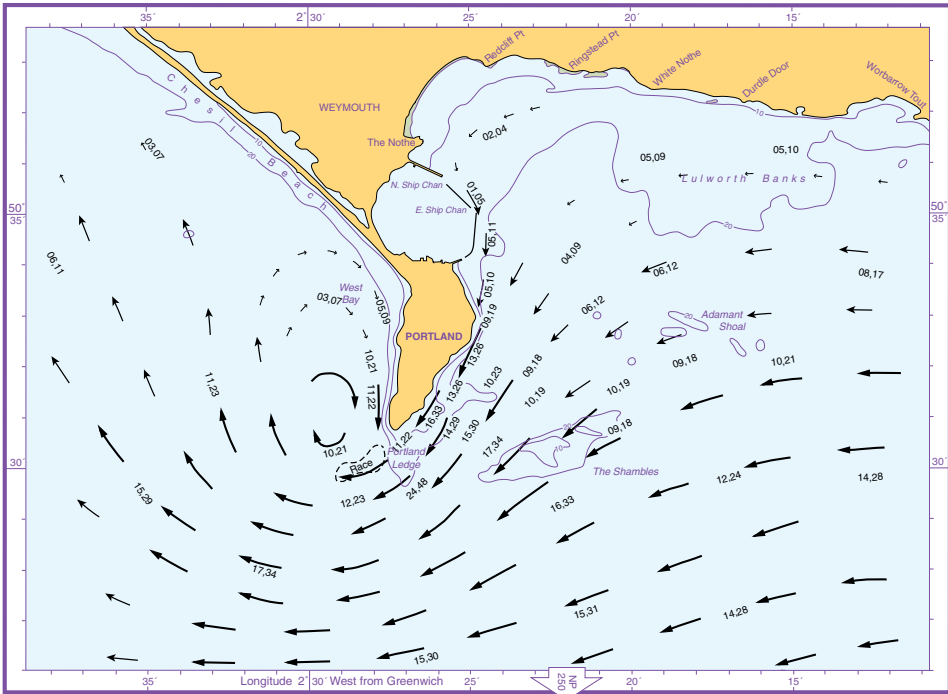
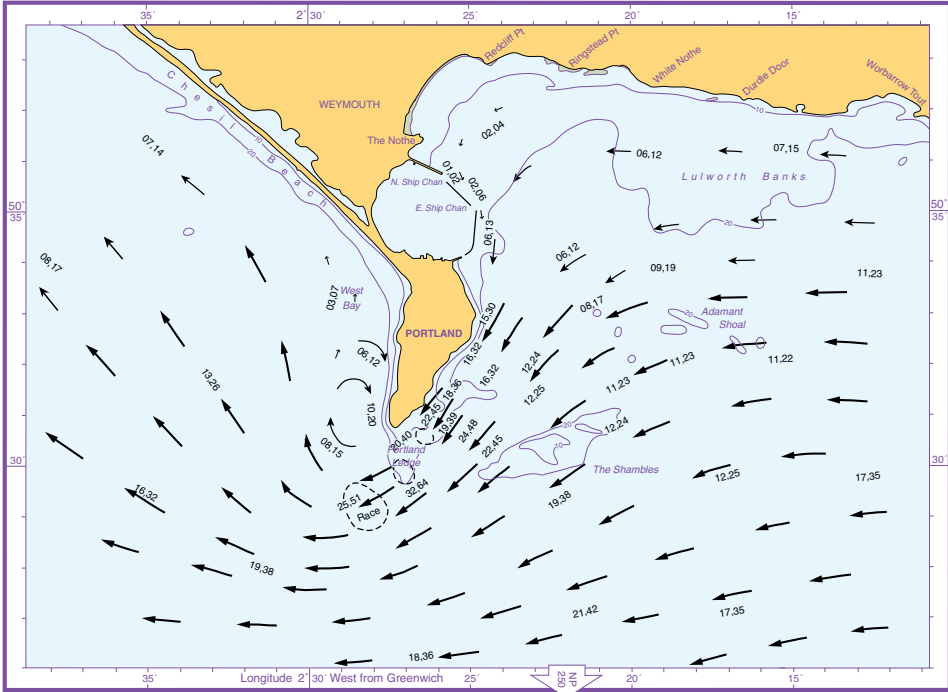
Tidal Streams

PORTLAND

The Tidal Stream Atlases show the rate and set of tidal streams in the local area. They are based on the time of High Water at Devonport, Plymouth and show the predicted tidal stream at hourly intervals. High Water Devonport is 1 hour before High Water Portland. The tide times for Portland

are given at page 50. The set is shown by arrows graded in weight and, where possible, in length to indicate the rate. The figures, against the arrows, give the mean rates in tenths of a knot for Neaps and Springs tides. Inshore eddies are rarely shown in detail due to the limitations of scale.



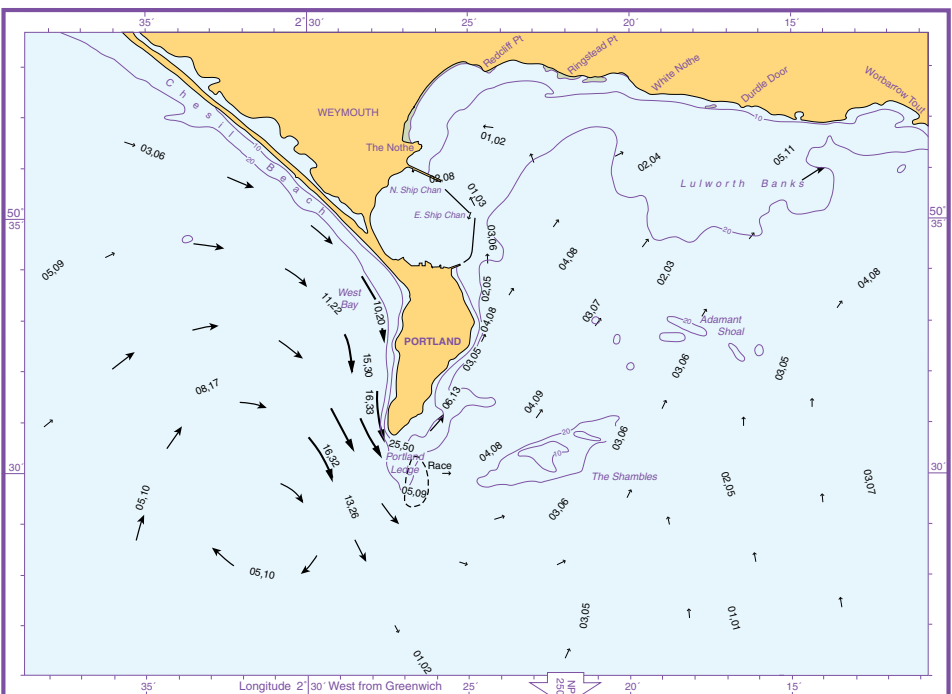
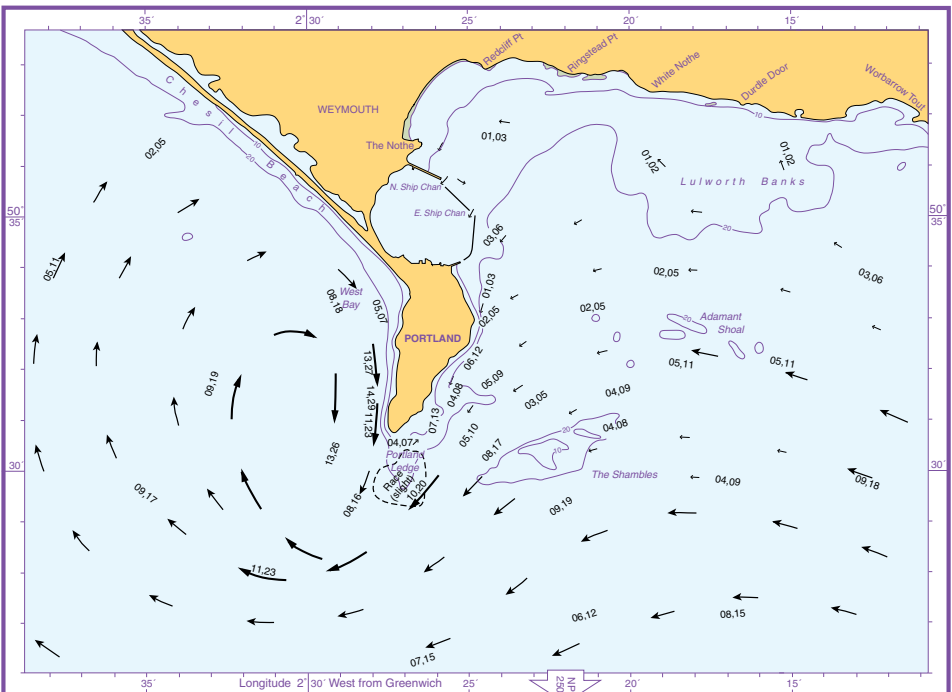


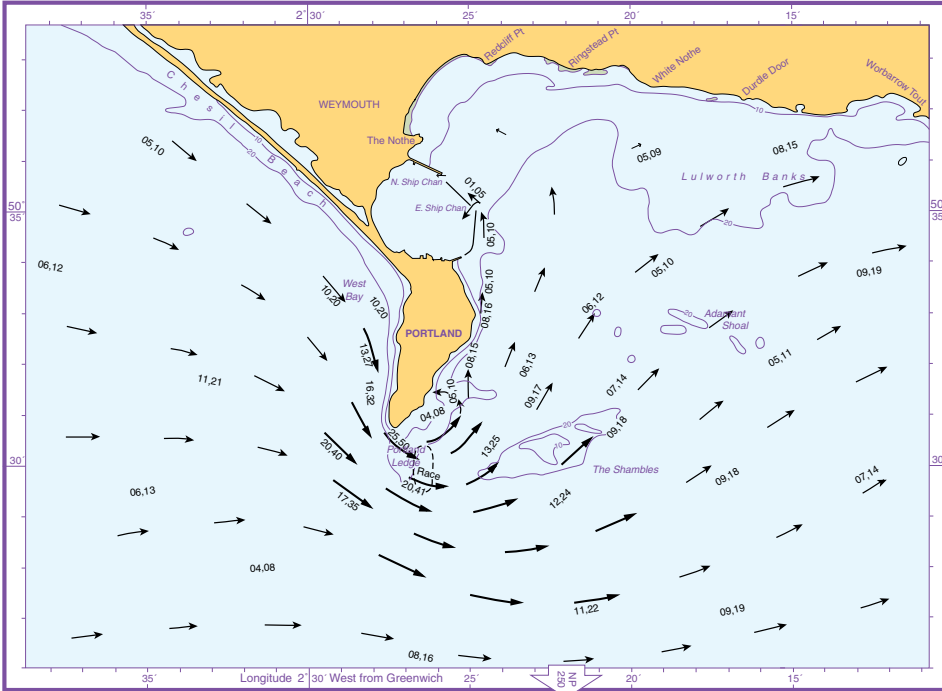
© Crown Copyright and/or database rights. Reproduced by permission of the Controller of Her Majesty's Stationery Office and the UK Hydrographic Office (www.ukhgov.uk).

© Crown Copyright and/or database rights. Reproduced by permission of the Controller of Her Majesty's Stationery Office and the UK Hydrographic Office (www.ukhgo.gov.uk).

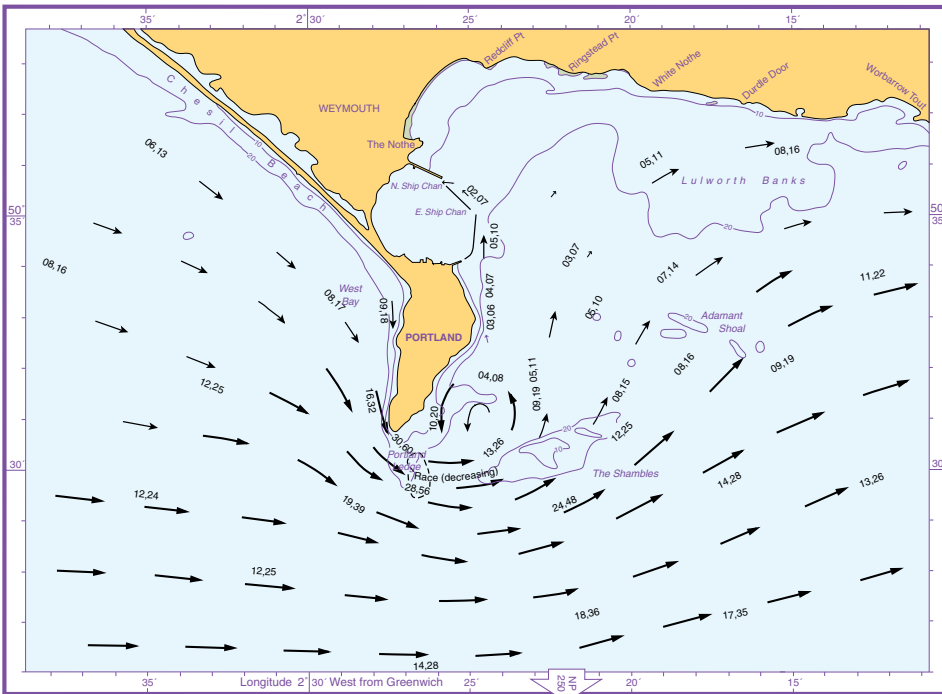
3	BEFORE HW PORTLAND
2	BEFORE HW DEVONPORT 4h 45m after HW DOVER

2	BEFORE HW PORTLAND
1	BEFORE HW DEVONPORT 5h 45m after HW DOVER





1 BEFORE
HW PORTLAND
5h 40m before HW
DOVER



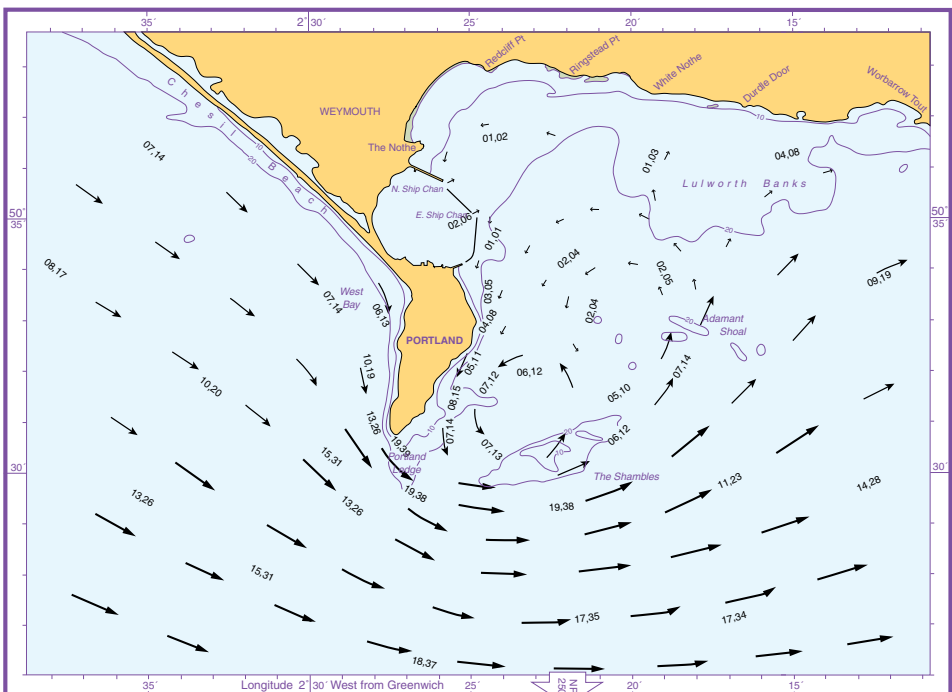
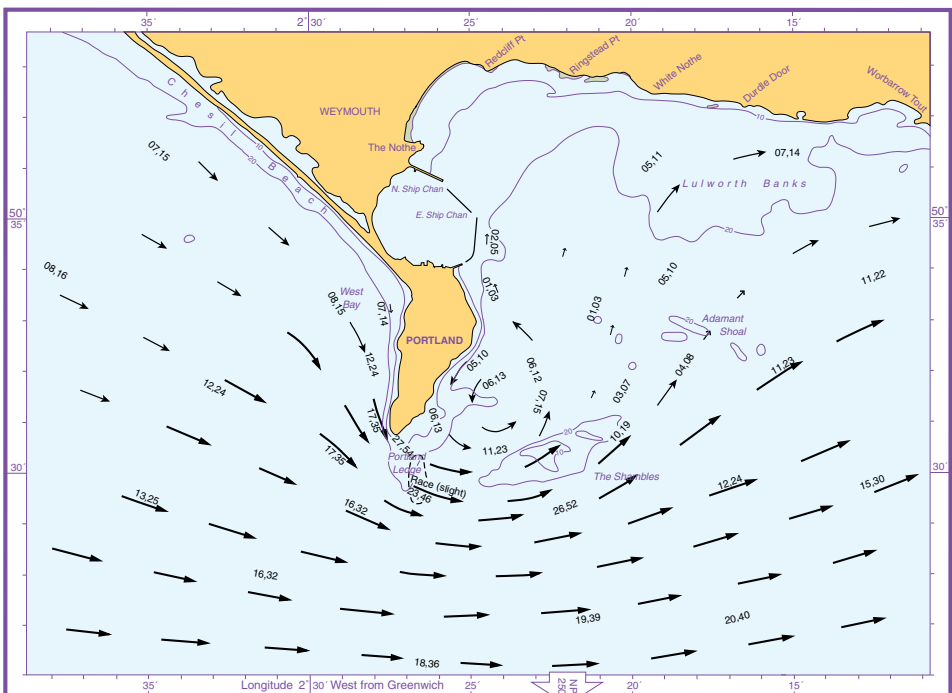
1 AFTER
HW PORTLAND
4h 40m before HW
DOVER

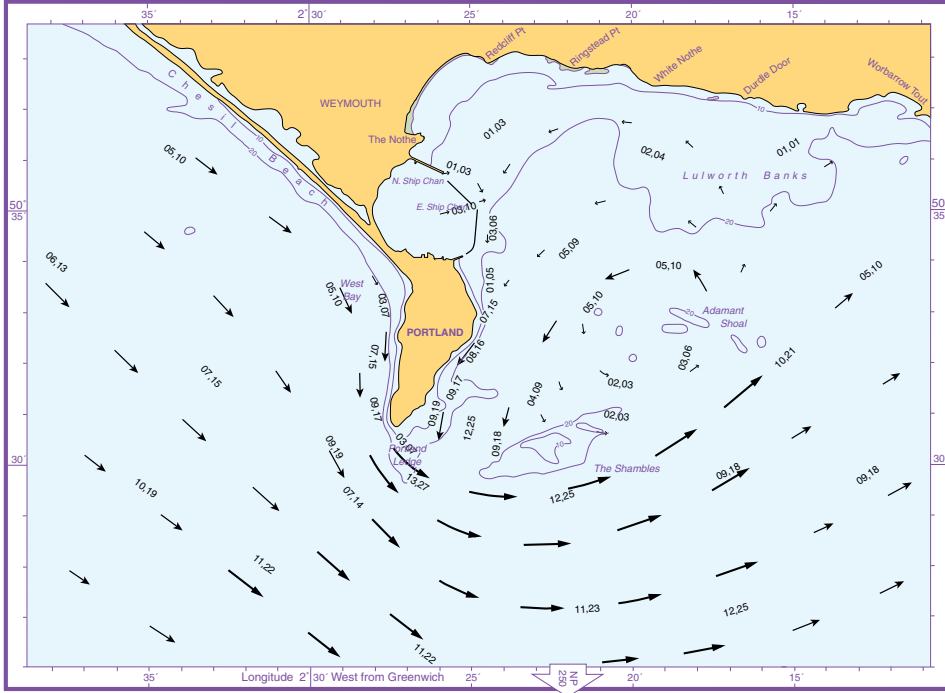
© Crown Copyright and/or database rights. Reproduced by permission of the Controller of Her Majesty's Stationery Office and the UK Hydrographic Office (www.ukhgov.uk).

© Crown Copyright and/or database rights. Reproduced by permission of the Controller of Her Majesty's Stationery Office and the UK Hydrographic Office (www.ukhgo.gov.uk).

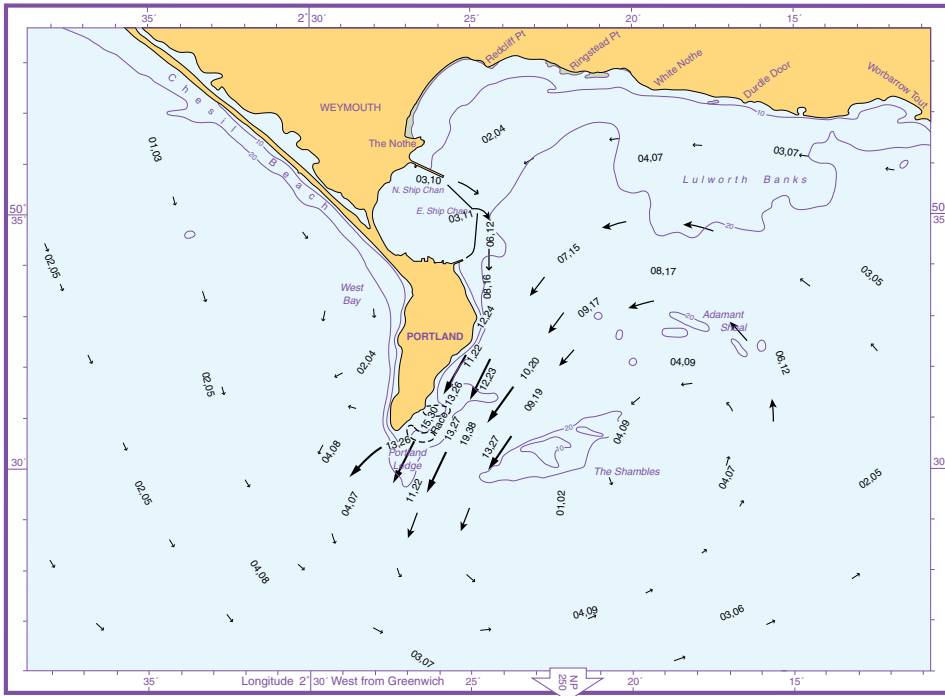
1	AFTER
2	AFTER
HW PORTLAND AND	
HW DEVONPORT	
3h 40m before HW	
DOVER	

2	AFTER
3	AFTER
HW PORTLAND AND	
HW DEVONPORT	
2h 40m before HW	
DOVER	





3	AFTER HW PORTLAND
4	AFTER HW DEVONPORT 1h 40m before HW DOVER



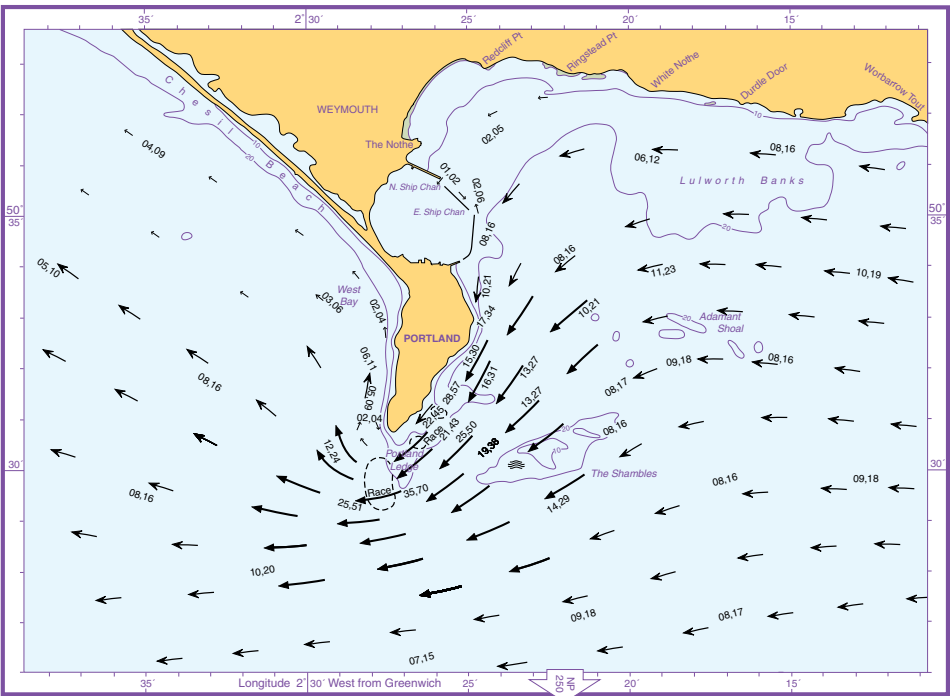
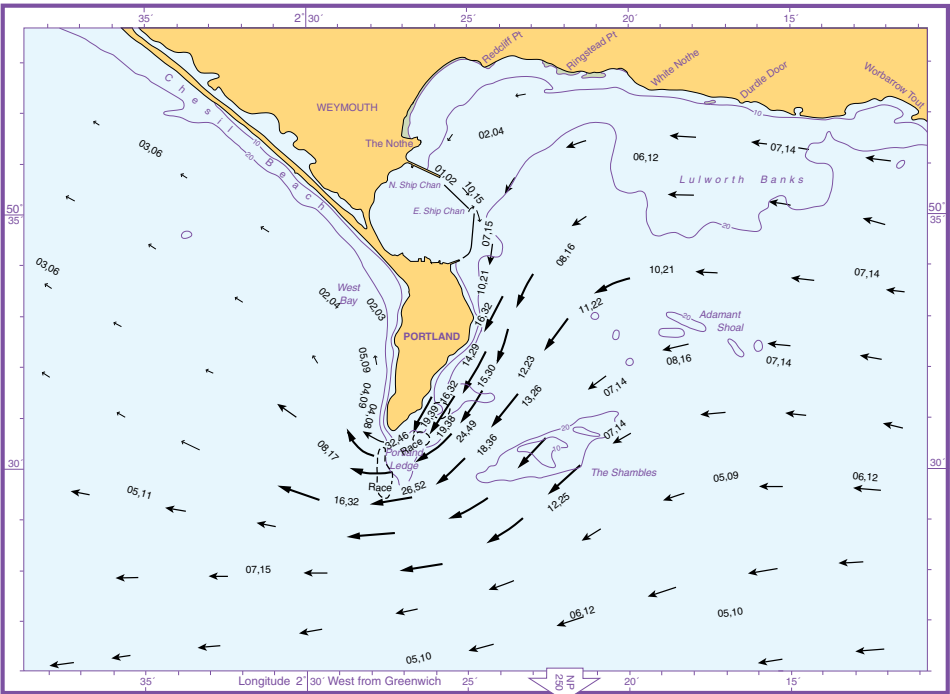
4	AFTER HW PORTLAND
5	AFTER HW DEVONPORT 0h 40m before HW DOVER

© Crown Copyright and/or database rights. Reproduced by permission of the Controller of Her Majesty's Stationery Office and the UK Hydrographic Office (www.ukhgov.uk).

© Crown Copyright and/or database rights. Reproduced by permission of the Controller of Her Majesty's Stationery Office and the UK Hydrographic Office (www.ukhgo.gov.uk).

5	AFTER
6	AFTER
	HW DEVONPORT
	0h 20m after HW
	DOVER

6	AFTER
6	BEFORE
	HW DEVONPORT
	0h 45m after HW
	DOVER



Tide Tables - PORTLAND

LAT 50°34'N LONG 2°26'W
Time zone UT(GMT)

January

February

March

April

Time	m	Time	m	Time	m	Time	m	Time	m	Time	m	Time	m		
1 F	0306 0.7 1037 1.7 1541 0.6 2305 1.5	16 SA	0330 0.4 1050 1.8 1608 0.4 2320 1.7	1 M	0341 0.6 1111 1.5 1611 0.6 2339 1.4	16 TU	0443 0.7 1239 1.4 1731 0.7	1 TU	0308 0.5 1033 1.5 1531 0.5 2252 1.5	16 W	0416 0.6 1215 1.4 1700 0.7	1 F	0435 0.6 1200 1.3 1707 0.6	16 SA	0148 1.4 0650 0.8 1446 1.3 1911 0.8
2 SA	0334 0.8 1115 1.6 1613 0.7 2349 1.4	17 SU	0419 0.6 1147 1.7 1701 0.5	2 TU	0435 0.7 1200 1.4 1709 0.6	17 W	0118 1.4 0603 0.8 1410 1.3 1902 0.7	2 W	0355 0.6 1120 1.4 1627 0.6 2348 1.4	17 TH	0030 1.4 0543 0.8 1353 1.3 1834 0.8	2 SA	0031 1.4 0817 0.7 1342 1.3 1829 0.7	17 SU	0303 1.5 0755 0.7 1544 1.5 2012 0.7
3 SU	0420 0.9 1202 1.4 1702 0.7	18 M	0027 1.5 0519 0.7 1307 1.5 1806 0.6	3 W	0042 1.4 0545 0.8 1314 1.3 1816 0.7	18 TH	0241 1.4 0833 0.8 1523 1.4 2027 0.7	3 TH	0505 0.7 1225 1.3 1737 0.6	18 F	0220 1.4 0740 0.8 1508 1.3 1953 0.8	3 SU	0225 1.4 0827 0.6 1515 1.4 2022 0.6	18 M	0400 1.6 0848 0.5 1635 1.6 2105 0.6
4 M	0053 1.4 0527 0.9 1310 1.4 1916 0.7	19 TU	0152 1.5 0634 0.8 1429 1.5 1928 0.7	4 TH	0224 1.4 0812 0.8 1456 1.4 1948 0.7	19 F	0348 1.6 0918 0.7 1628 1.5 2124 0.6	4 F	0109 1.3 0623 0.7 1415 1.3 1856 0.7	19 SA	0329 1.5 0843 0.7 1609 1.5 2052 0.7	4 M	0341 1.6 0911 0.4 1619 1.6 2124 0.4	19 TU	0449 1.7 0936 0.4 1721 1.8 2155 0.4
5 TU	0218 1.4 0747 0.9 1434 1.4 2010 0.7	20 W	0303 1.6 0836 0.8 1538 1.5 2049 0.6	5 F	0340 1.6 0904 0.7 1610 1.5 2116 0.6	20 SA	0447 1.8 1003 0.6 1724 1.7 2213 0.5	5 SA	0301 1.5 0847 0.6 1541 1.4 2053 0.6	20 SU	0427 1.7 0931 0.5 1702 1.7 2143 0.5	5 TU	0442 1.8 0958 0.3 1718 1.8 2215 0.3	20 W	0534 1.9 1022 0.3 1804 1.9 2241 0.3
6 W	0328 1.6 0839 0.8 1545 1.5 2057 0.6	21 TH	0406 1.7 0934 1.7 1643 1.7 2144 0.5	6 SA	0441 1.8 0953 0.5 1712 1.7 2209 0.5	21 SU	0538 1.9 1046 0.4 1814 1.9 2258 0.3	6 SU	0410 1.7 0934 0.5 1646 1.6 2148 0.4	21 M	0517 1.8 1015 0.4 1750 1.8 2230 0.3	6 W	0537 2.0 1045 0.1 1813 2.0 2303 0.2	21 TH	0616 2.0 1105 0.2 1844 2.0 2323 0.2
7 TH	0425 1.8 0926 0.7 1646 1.6 2143 0.5	22 F	0503 1.9 1022 0.6 1742 1.8 2233 0.4	7 SU	0535 1.9 1042 0.4 1807 1.8 2258 0.3	22 M	0625 2.1 1126 0.3 1900 2.0 2338 0.2	7 M	0509 1.9 1022 0.3 1744 1.8 2238 0.3	22 TU	0603 2.0 1057 0.2 1834 2.0 2313 0.2	7 TH	0630 2.2 1130 0.0 1904 2.2 2348 0.0	22 F	0653 2.0 1143 0.2 1919 2.1
8 F	0516 1.9 1013 0.6 1740 1.8 2228 0.5	23 SA	0554 2.1 1106 0.5 1833 1.9 2317 0.3	8 M	0625 2.1 1128 0.3 1857 2.0 2344 0.2	23 TU	0708 2.1 1203 0.2 1941 2.0	8 TU	0602 2.1 1109 0.2 1837 2.0 2326 0.1	23 W	0645 2.1 1137 0.2 1915 2.0 2352 0.1	8 F	0722 2.3 1213 -0.1 1952 2.3	23 SA	0000 0.2 0727 2.0 1215 0.2 1950 2.0
9 SA	0602 2.0 1059 0.5 1828 1.9 2314 0.4	24 SU	0642 2.2 1145 0.3 1920 2.0 2357 0.3	9 TU	0712 2.2 1212 0.1 1945 2.1	24 W	0015 0.1 0747 2.2 1238 0.1 2016 2.0	9 W	0653 2.2 1153 0.0 1929 2.1	24 TH	0722 2.1 1213 0.1 1949 2.1	9 SA	0030 0.0 0813 2.4 1254 -0.1 2035 2.3	24 SU	0031 0.2 0757 2.0 1243 0.2 2017 2.0
10 SU	0645 2.1 1143 0.4 1911 2.0 2358 0.3	25 M	0725 2.2 1222 0.3 2002 2.0	10 W	0027 0.1 0758 2.3 1254 0.1 2028 2.1	25 TH	0050 0.1 0818 2.1 1311 0.2 2041 2.0	10 TH	0009 0.0 0744 2.3 1235 -0.1 2016 2.2	25 F	0026 0.1 0754 2.1 1244 0.1 2016 2.0	10 SU	0110 0.0 0857 2.3 1333 0.0 2110 2.2	25 M	0059 0.2 0823 1.9 1310 0.3 2039 1.9
11 M	0725 2.2 1226 0.3 1950 2.0	26 TU	0034 0.2 0804 2.2 1258 0.2 2035 2.0	11 TH	0109 0.1 0839 2.3 1336 0.0 2103 2.1	26 F	0122 0.2 0846 2.0 1340 0.2 2105 1.9	11 F	0051 0.0 0831 2.4 1316 -0.1 2054 2.2	26 SA	0057 0.2 0822 2.0 1312 0.2 2041 1.9	11 M	0149 0.1 0934 2.1 1412 0.2 2141 2.1	26 TU	0127 0.3 0845 1.8 1338 0.3 2057 1.8
12 TU	0039 0.3 0803 2.2 1307 0.2 2028 2.0	27 W	0110 0.2 0837 2.1 1334 0.3 2103 1.9	12 F	0150 0.1 0917 2.2 1417 0.0 2136 2.0	27 SA	0149 0.3 0913 1.9 1405 0.3 2128 1.7	12 SA	0131 0.0 0911 2.3 1356 0.0 2125 2.1	27 SU	0124 0.2 0847 1.9 1336 0.3 2102 1.8	12 TU	0227 0.3 1009 1.9 1452 0.4 2215 1.9	27 W	0157 0.3 0912 1.7 1408 0.3 2124 1.7
13 W	0121 0.2 0841 2.2 1350 0.2 2105 2.0	28 TH	0144 0.3 0908 2.0 1408 0.3 2130 1.8	13 SA	0230 0.2 0954 2.1 1459 0.1 2212 1.9	28 SU	0213 0.3 0937 1.7 1427 0.3 2149 1.6	13 SU	0210 0.1 0945 2.1 1436 0.1 2155 2.0	28 M	0148 0.3 0909 1.7 1400 0.3 2118 1.7	13 W	0309 0.4 1051 1.6 1537 0.6 2256 1.6	28 TH	0231 0.4 0951 1.5 1443 0.4 2206 1.6
14 TH	0203 0.3 0921 2.1 1434 0.2 2146 1.9	29 F	0214 0.4 0938 2.0 1436 0.4 2157 1.7	14 SU	0310 0.3 1035 1.9 1542 0.3 2254 1.7	29 M	0237 0.4 1000 1.6 1454 0.4 2214 1.5	14 M	0248 0.2 1021 1.9 1516 0.3 2231 1.8	29 TU	0214 0.3 0931 1.6 1426 0.3 2142 1.6	14 TH	0401 0.6 1150 1.4 1636 0.8 2352 1.5	29 F	0315 0.4 1042 1.4 1533 0.5 2301 1.5
15 F	0246 0.3 1003 2.0 1519 0.3 2230 1.8	30 SA	0239 0.5 1007 1.7 1459 0.5 2225 1.6	15 M	0352 0.5 1123 1.7 1630 0.5 2347 1.5	15 TU	0327 0.4 1105 1.6 1601 0.5 2315 1.6	15 TU	0327 0.4 1105 1.6 1601 0.5 2315 1.6	30 W	0243 0.4 1006 1.5 1459 0.4 2222 1.5	15 F	0526 0.8 1329 1.3 1759 0.9	30 SA	0421 0.5 1145 1.3 1648 0.6
31 SU	0304 0.6 1036 1.6 1528 0.5 2257 1.5							31 TH	0324 0.5 1056 1.4 1550 0.5 2318 1.4						

Shaded areas are British Summer Time - please add one hour to time shown.

LOW WATERS - Important note. Double low waters occur at Portland. The predictions are for the first low water. The second low water occurs from 3 to 4 hours later and may, at springs, on occasions be lower than the first.

May			June			July			August						
Time	m	Time	m	Time	m	Time	m	Time	m	Time	m				
1 SU	0010 1.4 0538 0.6 1315 1.3 1807 0.7	17 TU	0319 1.5 0807 0.6 1601 1.6 2027 0.7	1 W	0234 1.6 0751 0.4 1520 1.7 2014 0.6	16 TH	0312 1.5 0822 0.6 1604 1.6 2045 0.7	1 F	0315 1.6 0829 0.5 1553 1.8 2059 0.6	16 SA	0316 1.4 0839 0.6 1608 1.6 2110 0.6	1 M	0512 1.7 1012 0.4 1732 2.0 2248 0.4	16 TU	0452 1.6 0952 0.5 1720 1.9 2228 0.4
2 M	0147 1.5 0711 0.5 1446 1.5 1937 0.6	18 W	0411 1.6 0857 0.5 1647 1.7 2118 0.5	2 TH	0340 1.7 0859 0.3 1619 1.8 2120 0.5	17 F	0411 1.6 0911 0.5 1651 1.8 2136 0.6	2 SA	0421 1.7 0932 0.4 1652 1.9 2202 0.5	17 SU	0423 1.5 0928 0.5 1700 1.8 2200 0.5	2 TU	0608 1.9 1059 0.3 1822 2.1 2331 0.3	17 W	0546 1.8 1040 0.4 1810 2.1 2313 0.3
3 TU	0308 1.6 0839 0.4 1551 1.7 2052 0.5	19 TH	0458 1.7 0945 0.4 1730 1.9 2207 0.4	3 F	0441 1.9 0952 0.3 1715 2.0 2215 0.4	18 SA	0503 1.7 0958 0.4 1735 1.9 2224 0.5	3 SU	0523 1.8 1025 0.3 1747 2.1 2255 0.4	18 M	0520 1.7 1015 0.4 1749 1.9 2248 0.5	3 W	0659 2.0 1141 0.2 1909 2.2	18 TH	0635 1.9 1126 0.3 1857 2.2 2356 0.2
4 W	0411 1.8 0930 0.3 1649 1.9 2148 0.4	20 F	0541 1.8 1031 0.3 1810 2.0 2253 0.4	4 SA	0540 2.0 1042 0.2 1808 2.2 2305 0.3	19 SU	0550 1.8 1042 0.4 1818 2.0 2308 0.4	4 M	0621 2.0 1113 0.2 1838 2.2 2342 0.3	19 TU	0609 1.8 1101 0.4 1834 2.1 2332 0.4	4 TH	0010 0.2 0747 2.1 1220 0.2 1953 2.3	19 F	0722 2.0 1209 0.2 1942 2.3
5 TH	0509 2.0 1019 0.2 1744 2.1 2238 0.2	21 SA	0622 1.9 1112 0.3 1848 2.1 2333 0.3	5 SU	0635 2.1 1129 0.1 1858 2.3 2352 0.2	20 M	0633 1.9 1122 0.3 1859 2.1 2348 0.4	5 TU	0715 2.0 1156 0.2 1927 2.3	20 W	0655 1.9 1143 0.3 1918 2.1	5 F	0047 0.2 0828 2.0 1258 0.2 2032 2.2	20 SA	0036 0.1 0806 2.1 1250 0.1 2025 2.3
6 F	0604 2.1 1106 0.1 1835 2.2 2326 0.2	22 SU	0659 1.9 1147 0.3 1924 2.1	6 M	0730 2.1 1212 0.1 1946 2.3	21 TU	0713 1.9 1159 0.3 1937 2.1	6 W	0023 0.2 0806 2.1 1237 0.2 2012 2.3	21 TH	0012 0.3 0737 1.9 1224 0.2 1959 2.2	6 SA	0123 0.2 0859 2.0 1334 0.2 2103 2.1	21 SU	0116 0.0 0841 2.1 1330 0.1 2100 2.2
7 SA	0657 2.3 1150 0.4 1924 2.3	23 M	0007 0.3 0733 1.9 1218 0.3 1956 2.0	7 TU	0034 0.2 0821 2.1 1253 0.2 2031 2.3	22 W	0024 0.3 0748 1.9 1236 0.3 2010 2.1	7 TH	0103 0.2 0849 2.0 1316 0.2 2053 2.2	22 F	0052 0.2 0814 1.9 1305 0.2 2035 2.1	7 SU	0158 0.2 0924 1.9 1408 0.3 2133 1.9	22 M	0156 0.1 0913 2.0 1410 0.2 2133 2.1
8 SU	0009 0.3 0750 2.1 1231 0.0 2010 2.3	24 TU	0039 0.3 0802 1.9 1250 0.3 2022 2.0	8 W	0116 0.2 0904 2.0 1333 0.3 2111 2.2	23 TH	0102 0.3 0819 1.9 1315 0.3 2041 2.0	8 F	0142 0.2 0922 1.9 1355 0.3 2127 2.1	23 SA	0132 0.1 0849 1.9 1346 0.2 2108 2.1	8 M	0230 0.3 0950 1.7 1438 0.4 2201 1.8	23 TU	0236 0.1 0948 1.9 1451 0.3 2211 1.9
9 M	0050 0.1 0838 2.2 1311 0.1 2051 2.2	25 W	0111 0.3 0829 1.8 1324 0.3 2046 1.9	9 TH	0158 0.3 0941 1.9 1414 0.4 2147 2.0	24 F	0141 0.3 0855 1.8 1355 0.3 2115 1.9	9 SA	0222 0.3 0952 1.8 1434 0.4 2200 1.9	24 SU	0213 0.1 0925 1.9 1427 0.2 2145 2.0	9 TU	0256 0.4 1018 1.6 1503 0.6 2231 1.6	24 W	0318 0.3 1029 1.8 1533 0.4 2256 1.7
10 TU	0130 0.2 0919 2.1 1351 0.2 2127 2.1	26 TH	0147 0.3 0902 1.7 1400 0.3 2119 1.8	10 F	0241 0.4 1016 1.7 1457 0.5 2223 1.8	25 SA	0224 0.3 0935 1.7 1438 0.3 2155 1.9	10 SU	0302 0.4 1022 1.6 1511 0.5 2232 1.7	25 M	0256 0.2 1006 1.8 1510 0.3 2226 1.9	10 W	0318 0.5 1050 1.5 1532 0.6 2304 1.5	25 TH	0404 0.5 1120 1.6 1623 0.6 2358 1.5
11 W	0211 0.3 0957 1.9 1432 0.4 2202 1.9	27 F	0228 0.3 0943 1.6 1441 0.4 2200 1.7	11 SA	0329 0.5 1053 1.6 1543 0.7 2301 1.7	26 SU	0310 0.3 1021 1.6 1525 0.4 2240 1.8	11 M	0340 0.5 1057 1.5 1545 0.7 2307 1.6	26 TU	0341 0.3 1053 1.7 1557 0.4 2315 1.7	11 TH	0352 0.6 1131 1.4 1619 0.7 2347 1.4	26 F	0501 0.6 1241 1.5 1732 0.8
12 TH	0255 0.5 1036 1.7 1517 0.6 2241 1.7	28 SA	0315 0.4 1032 1.5 1532 0.5 2251 1.6	12 SU	0423 0.6 1137 1.4 1638 0.8 2345 1.5	27 M	0400 0.3 1114 1.6 1618 0.5 2335 1.6	12 TU	0414 0.6 1137 1.4 1621 0.8 2348 1.5	27 W	0431 0.4 1150 1.6 1650 0.6	12 F	0444 0.7 1227 1.4 1724 0.8	27 SA	0135 1.4 0622 0.8 1414 1.5 1947 0.8
13 F	0349 0.6 1122 1.5 1612 0.7 2327 1.6	29 SU	0413 0.5 1131 1.4 1635 0.6 2353 1.5	13 M	0525 0.7 1237 1.3 1745 0.8	28 TU	0456 0.4 1220 1.5 1717 0.6	13 W	0450 0.7 1230 1.4 1715 0.8	28 TH	0018 1.5 0530 0.5 1310 1.5 1756 0.7	13 SA	0048 1.3 0550 0.7 1359 1.4 1959 0.8	28 SU	0255 1.4 0803 0.7 1523 1.6 2055 0.7
14 SA	0457 0.7 1235 1.3 1721 0.8	30 M	0518 0.5 1248 1.4 1743 0.6	14 TU	0041 1.4 1407 1.4 1853 0.8	29 W	0044 1.6 0559 0.5 1341 1.5 1825 0.7	14 TH	0040 1.4 0640 0.7 1347 1.4 1917 0.8	29 F	0145 1.5 0642 0.6 1430 1.5 1922 0.8	14 SU	0225 1.3 0810 0.7 1523 1.5 2051 0.7	29 M	0402 1.5 0902 0.6 1623 1.8 2143 0.6
15 SU	0030 1.4 0608 0.7 1410 1.3 1830 0.9	31 TU	0113 1.5 0630 0.5 1414 1.5 1857 0.6	15 W	0158 1.4 0729 0.6 1513 1.5 1952 0.8	30 TH	0205 1.6 0711 0.5 1452 1.6 1941 0.7	15 F	0156 1.4 0747 0.7 1506 1.5 2017 0.7	30 SA	0302 1.5 0815 0.6 1536 1.7 2106 0.7	15 M	0347 1.4 0903 0.6 1626 1.7 2140 0.5	30 TU	0500 1.7 0953 0.5 1716 2.0 2228 0.4
16 M	0214 1.4 0711 0.7 1511 1.4 1932 0.8									31 SU	0410 1.6 0920 0.5 1637 1.8 2200 0.6	31 W	0551 1.9 1039 0.4 1805 2.1 2311 0.3		

LOW WATERS - Important note. Double low waters occur at Portland. The predictions are for the first low water. The second low water occurs from 3 to 4 hours later and may, at springs, on occasions be lower than the first.

September

Time	m	Time	m
1 TH ●	0638 2.0 1122 0.2 1850 2.2 2350 0.2	16 F ○	0612 2.0 1104 0.3 1833 2.2 2333 0.1
2 F	0722 2.1 1200 0.2 1931 2.2	17 SA	0700 2.1 1149 0.2 1920 2.3
3 SA	0025 0.1 0801 2.1 1236 0.1 2007 2.2	18 SU	0015 0.1 0746 2.2 1230 0.1 2006 2.4
4 SU	0058 0.1 0830 2.1 1310 0.2 2036 2.1	19 M	0055 0.0 0824 2.3 1310 0.1 2046 2.3
5 M	0129 0.2 0852 1.9 1341 0.3 2103 2.0	20 TU	0134 0.1 0855 2.2 1350 0.1 2120 2.2
6 TU	0156 0.3 0916 1.8 1407 0.4 2129 1.8	21 W	0213 0.2 0927 2.1 1429 0.3 2156 2.0
7 W	0217 0.4 0941 1.7 1429 0.5 2155 1.6	22 TH	0253 0.4 1006 1.9 1510 0.5 2241 1.7
8 TH	0237 0.5 1006 1.6 1456 0.6 2223 1.5	23 F (0336 0.6 1054 1.7 1600 0.7 2347 1.5
9 F)	0308 0.6 1040 1.5 1537 0.7 2304 1.4	24 SA	0433 0.8 1208 1.5 1721 0.8
10 SA	0357 0.7 1132 1.4 1644 0.8	25 SU	0126 1.4 0607 0.9 1356 1.5 1915 0.8
11 SU	0005 1.3 0509 0.8 1250 1.4 1951 0.8	26 M	0245 1.4 0733 0.9 1508 1.6 2021 0.7
12 M	0145 1.3 0628 0.8 1443 1.5 2034 0.7	27 TU	0348 1.6 0834 0.8 1606 1.8 2112 0.6
13 TU	0319 1.4 0840 0.7 1553 1.7 2119 0.5	28 W	0441 1.8 0925 2.6 1657 1.9 2158 0.4
14 W	0425 1.6 0929 0.5 1651 1.9 2204 0.4	29 TH	0529 1.9 1012 0.5 1743 2.1 2241 0.3
15 TH	0521 1.8 1017 0.4 1744 2.1 2249 0.3	30 F	0613 2.1 1056 0.3 1826 2.2 2322 0.2

October

Time	m	Time	m
1 SA ●	0654 2.2 1135 0.2 1906 2.2 2358 0.2	16 SU ○	0632 2.3 1124 0.2 1854 2.3 2350 0.1
2 SU	0730 2.2 1211 0.2 1939 2.2	17 M	0716 2.4 1208 0.2 1940 2.4
3 M	0030 0.2 0756 2.1 1243 0.2 2007 2.1	18 TU	0031 0.1 0756 2.4 1248 0.1 2025 2.3
4 TU	0059 0.3 0822 2.0 1313 0.3 2034 2.0	19 W	0111 0.1 0832 2.3 1328 0.2 2105 2.2
5 W	0123 0.4 0845 1.9 1338 0.4 2059 1.8	20 TH	0150 0.3 0908 2.2 1409 0.3 2146 2.0
6 TH	0144 0.4 0905 1.8 1401 0.5 2121 1.7	21 F	0229 0.5 0949 2.0 1452 0.5 2233 1.8
7 F	0205 0.5 0925 1.7 1427 0.5 2149 1.6	22 SA (0313 0.7 1036 1.8 1546 0.7 2335 1.6
8 SA	0231 0.6 0959 1.6 1502 0.6 2234 1.4	23 SU	0411 0.9 1138 1.6 1708 0.8
9 SU)	0306 0.7 1053 1.5 1610 0.7 2337 1.3	24 M	0106 1.4 0536 1.0 1328 1.5 1830 0.9
10 M	0431 0.8 1206 1.4 1943 0.8	25 TU	0225 1.5 0652 1.0 1443 1.6 1935 0.8
11 TU	0110 1.3 0558 0.9 1403 1.4 2017 0.7	26 W	0327 1.6 0755 0.9 1541 1.7 2030 0.7
12 W	0253 1.5 0808 0.8 1521 1.6 2053 0.5	27 TH	0417 1.8 0848 0.8 1631 1.8 2118 0.5
13 TH	0358 1.7 0901 0.6 1621 1.8 2137 0.4	28 F	0502 1.9 0937 0.6 1717 2.0 2203 0.4
14 F	0454 1.9 0950 0.5 1715 2.0 2221 0.3	29 SA	0544 2.1 1023 0.5 1759 2.1 2246 0.3
15 SA ●	0545 2.1 1038 0.3 1806 2.2 2306 0.2	30 SU ●	0624 2.2 1105 0.4 1837 2.1 2326 0.3
31 M	0658 2.2 1143 0.3 1910 2.1		

November

Time	m	Time	m
1 TU ○	0000 0.3 0728 2.2 1218 0.3 1940 2.1	16 W	0008 0.2 0730 2.4 1228 0.2 2005 2.3
2 W	0029 0.3 0755 2.1 1247 0.4 2009 2.0	17 TH	0049 0.2 0813 2.4 1310 0.3 2053 2.2
3 TH	0055 0.4 0819 2.0 1314 0.4 2034 1.8	18 F	0130 0.3 0855 2.3 1353 0.4 2137 2.0
4 F	0119 0.5 0840 1.9 1341 0.5 2058 1.7	19 SA	0211 0.5 0938 2.1 1439 0.5 2221 1.8
5 SA	0145 0.5 0902 1.8 1412 0.5 2130 1.6	20 SU	0255 0.7 1023 1.9 1532 0.7 2310 1.6
6 SU	0212 0.6 0937 1.7 1450 0.6 2215 1.5	21 M (0348 0.9 1112 1.7 1638 0.8
7 M)	0245 0.7 1029 1.6 1551 0.7 2315 1.4	22 TU (0021 1.5 0456 1.0 1220 1.6 1746 0.8
8 TU	0358 0.8 1137 1.5 1708 0.7	23 W)	0148 1.5 0607 1.0 1359 1.5 1849 0.8
9 W	0036 1.4 0530 0.9 1310 1.5 2008 0.7	24 TH	0253 1.5 0711 1.0 1504 1.6 1946 0.7
10 TH	0219 1.5 0656 0.8 1443 1.6 2013 0.6	25 F	0344 1.7 0808 0.9 1556 1.7 2037 0.6
11 F	0326 1.7 0821 0.7 1546 1.8 2103 0.4	26 SA	0431 1.8 0859 0.7 1644 1.8 2125 0.5
12 SA	0421 1.9 0919 0.6 1643 2.0 2151 0.3	27 SU	0513 2.0 0947 0.6 1728 1.9 2211 0.4
13 SU	0513 2.1 1010 0.4 1736 2.1 2238 0.2	28 M	0552 2.1 1034 0.5 1807 2.0 2254 0.4
14 M ○	0601 2.3 1059 0.3 1827 2.3 2325 0.2	29 TU ●	0628 2.2 1117 0.5 1844 2.0 2332 0.4
15 TU	0647 2.4 1145 0.3 1916 2.3	30 W	0702 2.2 1154 0.4 1918 2.0

December

Time	m	Time	m
1 TH ○	0004 0.4 0733 2.1 1226 0.4 1950 1.9	16 F	0033 0.3 0759 2.4 1257 0.3 2043 2.2
2 F	0033 0.4 0802 2.1 1257 0.4 2018 1.9	17 SA	0115 0.3 0844 2.3 1340 0.3 2125 2.0
3 SA	0104 0.5 0827 2.0 1330 0.4 2047 1.8	18 SU	0156 0.4 0927 2.2 1425 0.4 2203 1.9
4 SU	0137 0.5 0855 1.9 1407 0.5 2121 1.7	19 M	0238 0.6 1007 2.0 1511 0.5 2241 1.7
5 M	0211 0.5 0931 1.8 1449 0.5 2203 1.6	20 TU	0322 0.7 1046 1.8 1603 0.6 2323 1.6
6 TU	0250 0.6 1017 1.7 1542 0.6 2256 1.5	21 W (0412 0.8 1130 1.6 1701 0.7
7 W)	0347 0.7 1115 1.6 1645 0.6	22 TH (0017 1.4 0516 0.9 1225 1.5 1804 0.8
8 TH	0003 1.4 0503 0.8 1229 1.5 2028 0.7	23 F)	0146 1.4 0628 1.0 1345 1.4 1905 0.7
9 F	0133 1.5 0617 0.8 1359 1.6 1907 0.6	24 SA	0258 1.5 0731 0.9 1503 1.5 2000 0.7
10 SA	0248 1.6 0733 0.8 1510 1.7 2021 0.5	25 SU	0351 1.6 0827 0.8 1601 1.6 2051 0.6
11 SU	0347 1.8 0845 0.7 1611 1.8 2121 0.4	26 M	0437 1.8 0917 0.7 1653 1.7 2139 0.5
12 M	0443 2.0 0944 0.6 1710 2.0 2214 0.3	27 TU	0519 1.9 1007 0.6 1738 1.8 2226 0.5
13 TU	0535 2.2 1038 0.5 1806 2.1 2303 0.3	28 W	0600 2.0 1053 0.5 1821 1.9 2308 0.4
14 W	0624 2.3 1128 0.4 1900 2.2 2350 0.2	29 TH	0639 2.1 1135 0.5 1901 1.9 2345 0.4
15 TH	0712 2.4 1214 0.3 1952 2.2	30 F	0716 2.1 1212 0.4 1937 1.9
31 SA	0020 0.4 0750 2.1 1246 0.4 2010 1.9		

Bon VOYAGE

We hope that you have enjoyed your stay, and discovering all that Weymouth has to offer.

We would be pleased to hear about your stay with us and welcome all feedback on your experience or suggestions on how we could try to improve. Comment cards are available in the harbour reception and shower area, or feel free to have a chat with a member of the team.

Approximate distances in nautical miles from Weymouth Harbour:

ALDERNEY	54
CHERBOURG	66
COWES	45
DARTMOUTH	50
FALMOUTH	104
GUERNSEY	71
JERSEY	90
LYMINGTON	41
THE NEEDLES	34
POOLE	26
PORTSMOUTH	57
SOUTHAMPTON	53
ST MALO	125
SWANAGE	22
YARMOUTH	39

Have a safe onward journey; we look forward to welcoming you again.

Weymouth Harbour Team



VISIT FALMOUTH

Our superb marina and moorings are set in the heart of historic Falmouth, moments from world-class sailing waters. Call today - 01326 310990

FALMOUTH HAVEN

THE BEST OF BOATING

WWW.FALMOUTHHAVEN.CO.UK





Guernsey, your next port of call.

**One of the finest natural anchorages
in the Channel Islands.**

Situated at the very heart of the port and nestling right beside the waterfront pubs, shops and restaurants, Guernsey Marinas offer good shelter in all weathers.

From the spires and towers on the skyline high above the harbour to the castle that guards its entrance, the town provides a striking vista as you pass through the pier heads and follow the buoyed channel

towards the visitors' pontoons in the Victoria Marina.

The facilities include shower blocks on both sides of the marina, and electricity and water is available on all Victoria Marina pontoons. Guernsey Marinas now has a walk-ashore facility outside the Victoria Marina which offers non-tidally restricted berths offering our visiting yachtsmen greater flexibility.



- VAT free area • Competitive charges
- 400 visitors' berths • 24hr marina supervision
- Good positioning for early and late season cruising
 - Stay 3 nights, get the 4th for free*

 **Guernsey Harbours**
A DIVISION OF THE PUBLIC SERVICES DEPARTMENT

Tel: 01481 720229 Email: guernsey.harbour@gov.gg
www.guernseyharbours.gov.gg

* Excluding June, July & August

POOLE PERFECTLY PLACED

VISITOR MARINA

Use your boat as a holiday home; entertain family, friends, colleagues or customers onboard; sail the stunning Jurassic Coast. Enjoy all the attractions of Poole, Bournemouth and beautiful Dorset. A warm welcome always awaits!

PERMANENT BERTHS

Whatever you love to do, you'll love our new marina. It's in a private position that makes the very most of the views and gorgeous sunsets, yet it's still close to Poole's historic quay, old town and vibrant shopping centre.

SWINGING MOORINGS

Relax with a glass of wine, on a sunny afternoon, on your own swinging mooring in Poole Harbour overlooking beautiful Brownsea Island. Away from the madding crowd, these offer you ultimate privacy, peace & tranquillity.

DRIVE A JET SKI OR RIB?

Keeping your craft on a Jet Ski or RIB Dock has the advantage of 'out-of-water' storage but still offers the convenience of marina-berthing and reduces the need for antifouling.



**Port of Poole Marina
& Poole Quay Boat Haven**

Poole Town Quay, Poole,
Dorset BH15 1HJ

t: 01202 649488

VHF Channel 80 call sign 'Poole Quay Boat Haven'

**POOLE QUAY
BOAT HAVEN
PORT OF POOLE
MARINA**

poolequayboathaven.co.uk

DESTINATION BERTHON



BOATYARD LYMINGTON MARINA INTERNATIONAL YACHT BROKERS NEW YACHTS SALES

Offering 280 deepwater berths in the beautiful Georgian town of Lymington on the West Solent close to Hurst Castle and the Needles, a marina that gives you everything you need for an overnight stay or a permanent base for your yacht; make Berthon your Destination.

- Short walk to Lymington high street where there are many restaurants, pubs, coffee shops, chandlers and a Saturday market
- On the doorstep of the New Forest and Salt Marsh nature reserve with a number of rare species of plant and a wide variety of migratory and breeding birds
- Train access to London and the rest of the UK and Europe, 40 minutes from Southampton International Airport, 90 minutes from Heathrow

- 280 deepwater, well-protected berths for yachts up to 45m (150ft) LOA with ample turning space and wide, stable pontoons
- Free WIFI with excellent internet access
- A full range of valet, maintenance and repair service, state-of-the-art modern sheds offering; preparation and painting, engineering, plumbing, shipwright, electrical and electronic services
- International Yacht Brokers with a 7 day a week operation at Lymington HQ and with overseas offices in La Napoule on the French Riviera and in Newport, Rhode Island, in the USA
- Our New Yacht Sales are the exclusive distributors for **Windy Boats** in the UK, France and Ireland, and have extensive experience working with the brand

BERTHON

UK OPEN 7 DAYS A WEEK

Berthon England
Lymington, Hampshire SO41 3YL England
Tel: 44 (0) 1590 673312 Fax: 44 (0) 1590 647446
enquiries@berthon.co.uk www.berthon.co.uk

Berthon France
Port de Mandelieu la Napoule, 06210, France
Tel: 0033 493 635 839 Fax: 0033 493 636 439
brokers@berthonfrance.fr www.berthonfrance.com

Berthon USA
40 Mary Street & The Newport Shipyard, RI 02840
Tel: 001 401 846 8404 Fax: 001 401 846 7349
sales@berthonusa.com www.berthonusa.com

Join us for our latest news   @BerthonGroup

SYNONYMOUS WITH YACHTING SINCE 1877



WE DISCOVER



WE ENTERTAIN



WE EAT



WE ENJOY



WE WELCOME

For all your tourist information and events in Weymouth

WeAreWeymouth.co.uk

Weymouth, the perfect place to be all year round

Follow us on Facebook and Twitter

 @WEAREWEYMOUTHUK

 WEAREWEYMOUTHUK

 WEAREWEYMOUTHUK

WEYMOUTH
WEAREWEYMOUTH.CO.UK

LOCAL BUSINESS
SUPPORTING
WEYMOUTH

