




Defence
Infrastructure
Organisation

The Lulworth Ranges Information for Mariners 2019



Range Control
Lulworth Camp
Wareham
Dorset
BH20 5QF



1. Army units conduct live fire gunnery training on Lulworth Ranges. During firing periods it helps us **if mariners please for their own safety avoid our sea danger areas**, which extends some 6 nautical miles south of Lulworth Cove, and keep at least 1+ miles clear of the target buoys on St. Albans ledge. Valuable training time can be lost when vessels stray into the weapon danger areas. Delays are frustrating and expensive, so we welcome your co-operation. Full details of the sea danger areas are available in yacht clubs. A map is reproduced on the back page for your convenience.

2. Daylight Firing. Normal firing times are: All Times are Local:

Monday to Thursday	0930	-	1700 hrs
Friday	0930	-	1230 hrs
Friday firing weekends only	0930	-	1700 hrs

3. Night Firing. Tuesdays and Thursdays are chosen for night firing, sometimes other days are selected. Firing begins as soon as it is dark and lasts until 23.59. Timings vary with the season of the year.

4. Weekend Firing. Army Reserve training is annual and firing takes place at weekends, but this only occurs a maximum of 6 times a year and is programmed well in advance. For 2019 a total of 6 weekends have been reserved for firing and these are:

23 - 24	February	2019
16 - 17	March	2019
15 - 16	June	2019
21 - 22	September	2019
5 - 6	October	2019
16 - 17	November	2019

5. Exact details of the firing programmes, including any changes to the forecasts given in the paragraphs above, are sent monthly in advance to all the main yacht clubs in the area.

6. Firing times are broadcast on Radio Solent (300m, 221m, 96.1 MHz and 103.8 MHz) during the shipping and weather news at about 0645 and 0745 hours on weekdays.

Information for Mariners

Information for Mariners

7. Non Firing Periods. There will be no Army firing within the D026 inner area and no sea danger areas will be operated during the periods below (all dates inclusive):

Christmas	22 December 2018	-	6 January 2019
Easter	6 April 2019	-	22 April 2019
May Day	6 May 2019		
Spring	25 May 2019	-	2 June 2019
Summer	24 July 2019	-	1 September 2019
Christmas	21 December 2019	-	5 January 2020

8. Danger Signals. Red flags are flown, and red flashing lights are displayed from the flag-staffs on Bindon Hill, Kimmeridge Bay and St. Albans Head **ONLY WHEN ARMY FIRING IS TAKING PLACE.** However, further ashore, mariners may notice some red flags which fly whether or not firing is taking place, these mark the range boundary.

9. Range Boats. During firing, range safety boats are on station (in all practicable weather conditions) at the outer extremities of the danger area.

10. Radio. Army Range Control listen on Channel 8 and range boats listen on VHF Channel 8 and 16 when firing is in progress.

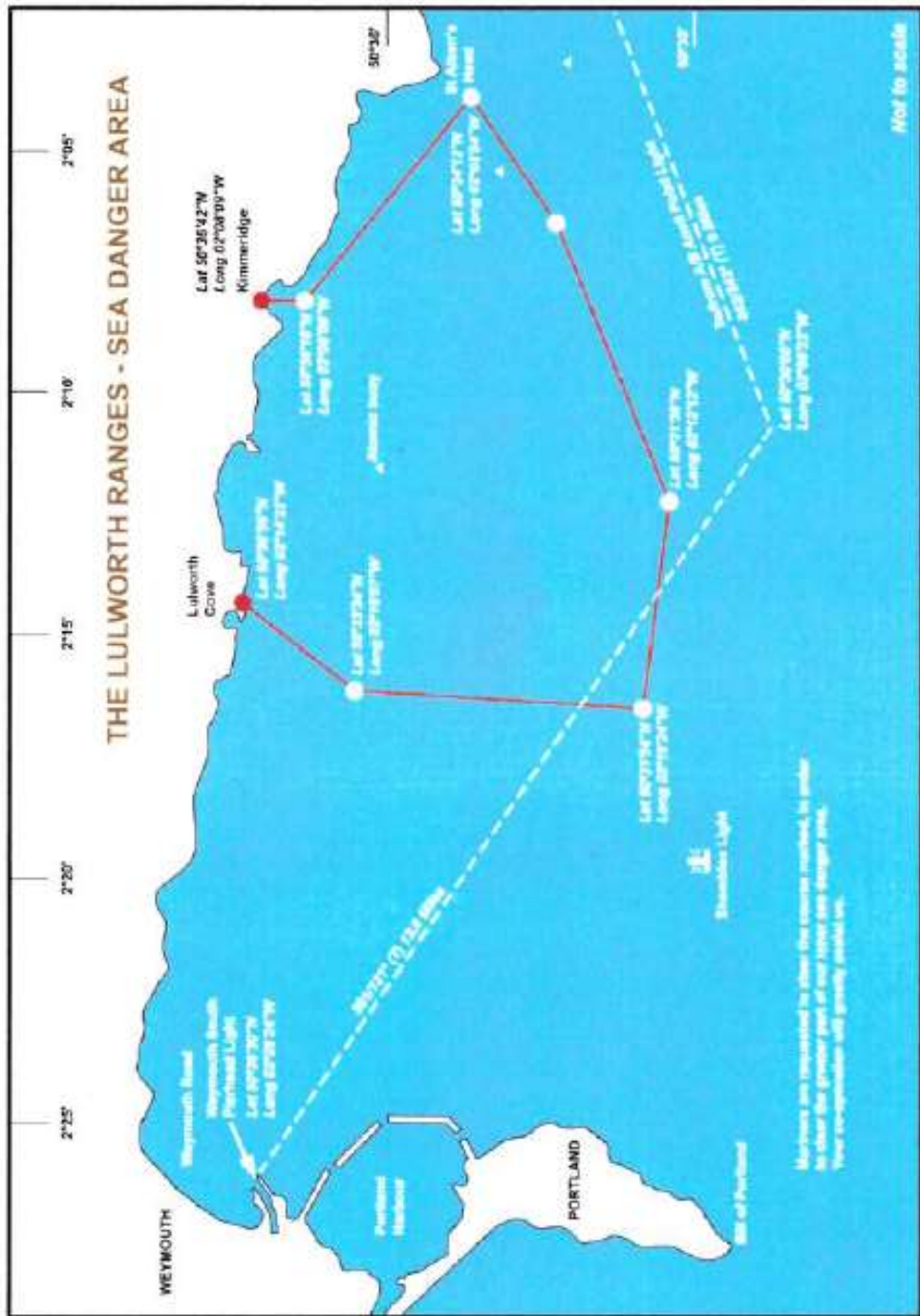
11. Bylaws. Copies of the Bylaws affecting the Lulworth Ranges are available for inspection at a number of places, the most convenient being the Coastguard Station HQ, Weymouth, or the Weymouth Harbour Office.

12. For further information, please contact :

**01929 404701 Working Hours or
01929 404714 for current range information**

or speak to the Range Safety Boats direct. They will be able to give you a safe course of passage outside the Live Firing Sea Danger area. Their call sign is - **"Lulworth Range Safety Boat"**.





Datum - OSGB 36



Designed and printed by
Training Technology Enhanced Learning
HQ Armour Centre, Allentby Barracks, Bowington BH42 6JA
E-mail: ARM-CEN-TDNG-TTEL-OM@bbc.com/mod.gov.uk

IR 00565: Information For Mariners, 2019