

Weymouth Harbour

Guide
2017



A hidden gem

Discover an unspoiled, peaceful,
natural and totally relaxing British Isle,
just a short sail away.

01481 822333 info@visitalderney.com
www.visitalderney.com

Alderney
THE CHANNEL ISLAND

Contents

To aid navigation of this guide, please refer to the colour-coded bars to the right of each page and match with the coloured sections shown to the right.



Published for and on behalf of Weymouth & Portland Borough Council by:

RESORT
MARKETING

Resort Marketing Ltd

St Nicholas House, 3 St Nicholas Street,
Weymouth, Dorset DT4 8AD
Tel: 01305 770111 | Fax: 01305 770444
Email: info@resortmarketing.uk
www.resortmarketing.uk

Tidal stream data and tide tables on pages 43-52 reproduced by permission of the Controller of Her Majesty's Stationery Office and the UK Hydrographic Office (www.ukho.gov.uk). © Crown Copyright.

No liability can be accepted by Weymouth & Portland Borough Council or the publisher for the consequences of any inaccuracies. The master of any vessel is solely responsible for its safe navigation. All artwork and editorial is copyright and may not be reproduced without prior permission.
© Resort Marketing Ltd, December 2016.



Dorset Councils Partnership

Welcome	4
Navigation, Berthing & Facilities	6
Harbour Team	6
Marina Berths	8
Visitor Berths	9
Entering & Leaving the Harbour	10
Outer Harbour Berthing Chart	11
Harbour Facilities	12
Harbour Dues	13
Weymouth & Portland	14
Charming Weymouth Harbour	14
Portland Bill & Portland Races	15
Things to See & Do	16
Local Festivals and Events 2017	18
Town Map	20
Time to Shop	22
Time to Eat	24
Waterfest Weymouth	26
Pommery Dorset Seafood Festival	27
Nothe Fort	28
Sandsfoot Castle	29
Weymouth Watersports Access Zones	30
PWC and Slipway Launching Fees	31
Explore Dorset	32
The Jurassic Coast	32
Lulworth Ranges	33
Heading West	34
Heading East	35
The Community Seagrass Initiative	35
Safety	36
Harbour Directory	38
Yacht Clubs of Weymouth	38
Useful Information & Contacts	39
Marine Services & Sales	40
Tidal Stream Data	43
Tide Tables	50
Bon Voyage	54

WELCOME

TO WEYMOUTH HARBOUR

“**M**ay I extend a very warm welcome to Weymouth. We are very proud of our harbour and we would like to help ensure your visit is an enjoyable and successful one.

Whether you are here for work, for one of the many exciting events taking place around the harbour during the year or just as part of a visit to explore the local area, we hope that it is memorable for all the right reasons. If it is, please return and also tell all your friends to come too.

Please do not hesitate to contact us in the Harbour Office for information, advice and support. We also value your feedback so if you have any suggestions, comments or even complaints, please come and talk to us about them so that we can move the harbour service forward in a direction which is beneficial to all.

Let's hope for a busy but safe 2017.

Keith Howorth

Keith Howorth, Harbour Master



Weymouth Harbour Office

13 Custom House Quay, Weymouth,
Dorset DT4 8BG

Tel: +44(0)1305 838423.

Email: weymouthharbour@dorset.gov.uk

www.weymouth-harbour.co.uk



Photography Credits:

Resort Marketing Ltd, Mark Simons, Geoff Moore, Nigel Lord, Guy Edwardes, FEAST Weymouth - Lara Jane Thorpe, Dorset Media Services, Weymouth and Portland Borough Council, West Dorset District Council. Ed Coleman - www.edcolemanphotography.com



Willkommen am Weymouth Harbour

„Ich möchte Sie ganz herzlich in Weymouth willkommen heißen. Wir sind stolz auf unseren Hafen und möchten Ihnen helfen, Ihren Besuch hier so angenehm und erfolgreich wie möglich zu machen.

Ob Sie hier sind, um zu arbeiten, um an einem der zahlreichen spannenden Events teilzunehmen, die im Laufe des Jahres um den Hafen herum stattfinden, oder ob Sie nur auf einen Sprung vorbeigekommen sind, während Sie die Umgebung erkunden – wir hoffen, Sie werden sich später noch gerne an Ihren Aufenthalt hier zurückerinnern. Falls dem so ist, würden wir uns freuen, Sie hier wieder begrüßen zu dürfen. Und bringen Sie am besten auch gleich Ihre Freunde mit!

Zögern Sie nicht, uns im Harbour Office anzusprechen, falls Sie Informationen, Rat oder Hilfe benötigen. Wir freuen uns auch über Feedback. Falls Sie also Vorschläge, Anmerkungen oder auch Beschwerden haben, würden wir gerne davon erfahren, damit wir unseren Hafen-Service verbessern und so Mehrwert für alle schaffen können.

Auf ein geschäftiges und sicheres 2017!“

Keith Howorth, Hafenmeister



Welkom in de haven van Weymouth

“Weymouth heet u van harte welkom. Onze haven is onze trots en we helpen u graag uw bezoek zo aangenaam en plezieriger mogelijk te maken.

Wij wensen u in elk geval een positieve, onvergetelijke ervaring toe, of u nu op zakenreis bent, een bezoek brengt aan een van de vele spannende activiteiten die tijdens het jaar plaatsvinden in de haven of de haven aandoet terwijl u de plaatselijke omgeving verkent. Wij zien al onze gasten graag terug en hopen dat zij hun ervaringen met familie en vrienden zullen delen.

Loop ook gerust binnen bij het havenkantoor als u informatie, advies of steun zoekt of feedback hebt. Wij stellen alle opmerkingen, positief én negatief, op prijs en gaan graag met u het gesprek aan over verbeteringen van de havendiensten die aan iedereen ten goede komen.

Laten we er samen een bruisend en veilig 2017 van maken.”

Keith Howorth, Havenmeester



Bienvenue au port de Weymouth

« Je vous souhaite personnellement la bienvenue à Weymouth. Nous sommes très fiers de notre port et nous souhaitons nous assurer que votre visite soit agréable et fructueuse.

Que vous soyez ici pour le travail, pour une des nombreuses manifestations passionnantes qui se déroulent autour du port pendant l'année ou juste dans le cadre d'une visite destinée à explorer la région, nous espérons qu'elle sera mémorable pour toutes les bonnes raisons. Si c'est le cas, revenez et invitez également tous vos amis à venir eux aussi.

N'hésitez pas à nous contacter au bureau du port pour des informations, un conseil et une assistance. Vos commentaires nous sont précieux, ainsi si vous avez des suggestions, des commentaires ou même des réclamations à faire, venez nous en parler pour que nous puissions faire progresser le service du port dans une direction bénéfique à tous.

Espérons une année 2017 active et sûre. »

Keith Howorth, Capitaine du port

Harbour TEAM

Weymouth Harbour team has a passion for exceptional service

Carrying out a pretty diverse but exciting and enjoyable workload, our busy team saw a few changes in 2016. We welcomed Corrina Briggs to Administration and Jan Ridd as a Berthing Officer, whilst Becky Mustoe took on the role of Moorings Officer after Mary Horton retired in May.

Harbour staff are happy to assist with all of your berthing enquiries, whether you're speaking to our Administration Team about annual moorings, the harbour website and marketing, or talking to the Berthing Office Team as a visitor. During the busy summer months you'll also find our seasonal staff members working within the Berthing Office Team: they are on hand to enable our great customer service to continue.

We regularly welcome customer feedback, so please do shout if there is anything further we can do to help.

If you would like to contact a member of the team, you can do so via our website www.weymouth-harbour.co.uk via email weymouthharbour@dorset.gov.uk or call +44(0)1305 838423.

You can also keep up to date with Weymouth Harbour and the Harbour Team on our Facebook page.



Weymouth Harbour.





Weymouth Harbour Berthing

MOOR FOR LESS

Our Marina is in a superb location, offering excellent value for money. Berths benefit from being in sheltered waters, literally 5 minutes' walk to the town centre, and a short stroll around the historic outer harbour takes you to the beautiful golden beaches and safe bathing waters. It is truly a great and unique location.


As an annual berth holder you can enjoy free use of the grid and slipway, berth holders' secure parking (minimal charges apply) and a reduced rate for town centre car park permits. Our attractive and easy payment options mean if you need to leave part way through the year (we hope that you don't!) there are no annual tie-ins, giving you the most flexible berthing package.

Short term temporary use of berths and winter berthing are also available.

If you need any information, please contact us: we look forward to welcoming you as a customer.

Moorings Officers (Claire and Becky) +44(0)1305 838422
MOfficer@dorset.gov.uk

Berths available for up to 20m LOA



"One of Sailing Today's top 12 harbours to visit"

"Lots of hidden gems, the quay was wonderful. Bars a stone's throw from each other and food was excellent. Will visit again."

Visitor BERTHS

Join the bustling atmosphere in our vibrant harbour

We continue to build on the improvements to our visitor facilities in recent years and are delighted to receive some really positive feedback from the many visitors that we welcome each year. We are also continuing the successful Pocket Guide Loyalty Scheme, whereby visitors are able to obtain a free night's berthing.

Most visitor berths are alongside floating pontoons which creates a vibrant and friendly atmosphere in the harbour. Visitor berths are located both on the south and north side of the harbour as shown on the chart on page 11.

- Vessels up to 10 metres should berth on the south side of the harbour (the Cove).
- Vessels over 10 metres should berth on the north side, either opposite the Lifeboat Station, adjacent to Weymouth Pavilion or outside the Harbour Office.
- Vessels over 18 metres: where possible advance notice of your arrival should give us an opportunity to try and make a suitable space.

Rallies and Events

Weymouth is a popular destination for visiting rallies and we welcome the opportunity to host your event. We aim to ensure your event gains maximum enjoyment both on and off the water and to create an opportunity for you to enjoy a relaxed, sociable atmosphere in the heart of the town. Discounts are available, please contact the Berthing Office on +44(0)1305 838423 for prices.



Entering & Leaving THE HARBOUR

Harbour Entrance

The harbour entrance lies between two piers. The main channel is indicated by red transit lights at night and diamond shapes by day on the South Quay bearing 239° 38'. The leading lights at the approaches to Weymouth Harbour are high intensity units with a range of 7.5 miles.

A conspicuous addition to the skyline of Weymouth Bay, which provides a useful aid to navigation, is the Jurassic Skyline. This white chimney-like structure is 55 metres high and has a people pod which can be seen ascending and descending from time to time. At night it is marked by flashing red hazard lights. It lies 200 metres west of the Weymouth Harbour entrance.

Traffic signals are displayed in a vertical line from a mast on the South Pier. When passage in or out of the harbour is restricted the signals will be operational and the lights must be observed.

Please see Reeds Nautical Almanac 9.1.28 for full details.

DEAD SLOW SPEED IN THE HARBOUR

The speed restriction requires that operators of craft are to proceed at a speed whereby their wash does not cause annoyance to other harbour users.

Town Bridge

Mariners requiring bridge lifts should be within sight of the Town Bridge operator (on approach, the starboard side of the bridge) before the scheduled time listed, and listen on VHF channel 12 for Town Bridge information approximately 5 minutes before the scheduled lifting time.

Before entering the harbour, visiting vessels should contact Weymouth Harbour for berthing advice.

**Call sign "Weymouth Harbour"
on VHF channel 12**

Traffic Signals



indicates flashing light



Entry to harbour is clear with caution.



A vessel is LEAVING or is about to leave the pierheads area. No other vessel may approach the pierheads in such a way as to obstruct the pierheads area.



All vessels await instructions.



A vessel is APPROACHING the pierheads area from seawards. No vessel may leave that part of the harbour which lies west of the pierheads area.



Port Closed.
Entrance foul.
No vessel may enter the pierheads area.



A vessel may proceed only when it has received orders to do so.

The waiting pontoon on the port (south) side is available for inbound visitors. A fee may be charged if the next scheduled bridge is not used. Bookings for bridge lifts can be arranged by calling Weymouth Harbour on VHF channel 12 or by telephoning +44(0)1305 838423 (answer phone when not manned). Bookings in advance are required during the winter. Mariners are reminded that the traffic lights at the Town Bridge are to be obeyed by all vessels, regardless of size.

Bridge Lifting Times

15 April – 15 Sept inclusive:

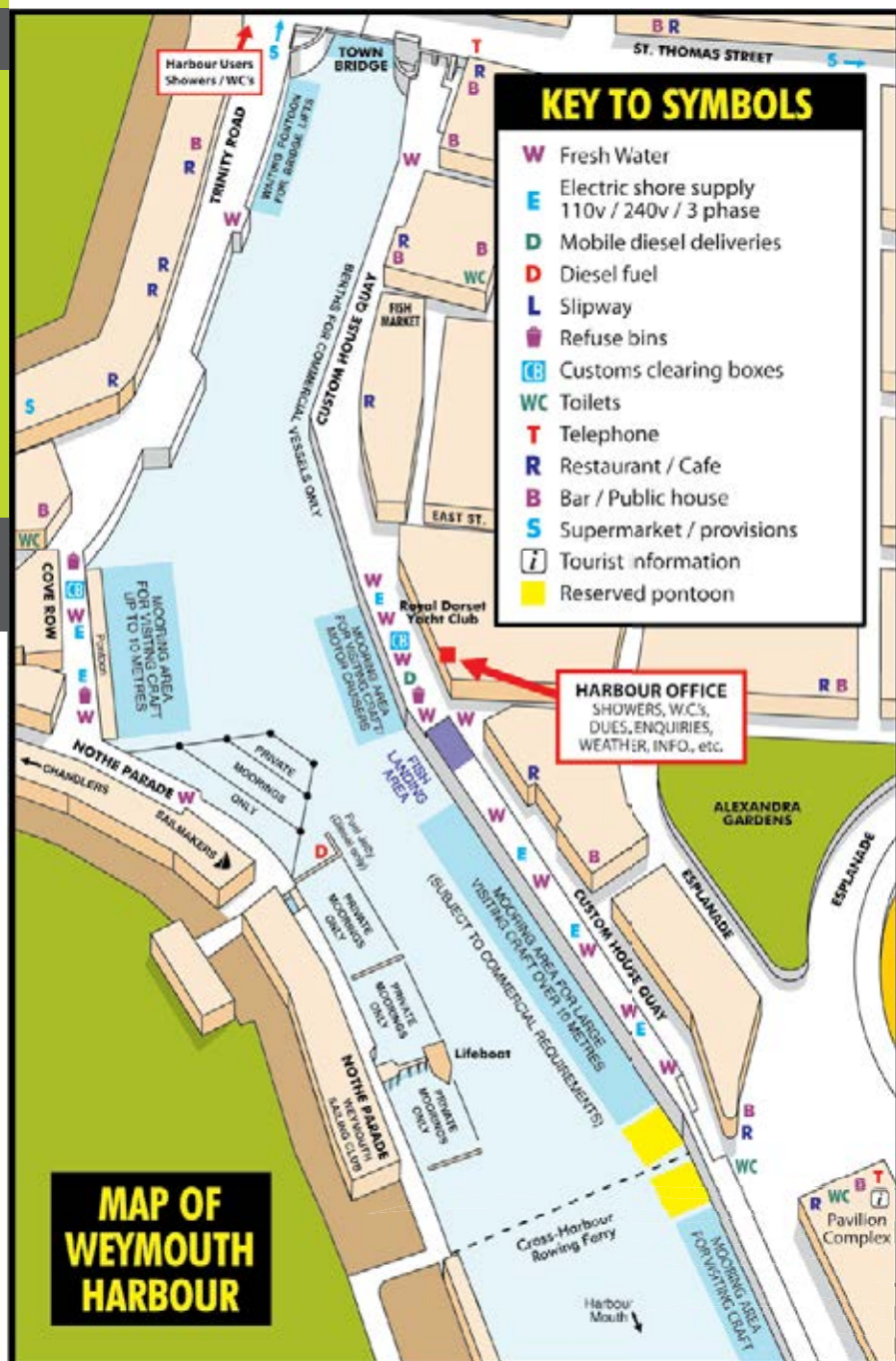
Every two hours from 0800 to 2000. In June, July & August there's an additional lift at 2100.

16 Sept – 14 April inclusive:

Every two hours from 0800 to 1800. A minimum of one hours notice is required for lifts during this period.

Outer Harbour Berthing Chart

1. Before entering the harbour, please contact us on VHF12 for berthing advice. Call sign "Weymouth Harbour."
2. Vessels visiting during 'silent' hours should proceed to a suitable berth as shown on the Harbour map opposite. If a vacant berth is not available please berth alongside a vessel of similar length and type.
3. Fairway Position: Lat. 50° 36.72' N.
Long. 02° 26' W
Charts: 2172, 2255, 2268
Prevailing Winds:
West/South-westerly
4. Dead Slow Speed in the Harbour – if in doubt about your speed, look behind you, you may be surprised at the effect your wash is having!



Harbour FACILITIES

Reception/Harbour Office is open 7 days a week from 0730 in the morning until the last bridge lifts (high season until 2100). You can also contact a member of the team on VHF Channel 12.

Showers are located on the ground floor of the harbour office and at North Quay (see chart on page 11). 24 hour access is available; a code to the door will be given to you on arrival.

Power and Water 240v electricity is available at visitor berths and most marina berths benefit from metered electricity. If you require electricity during your stay, there is a plug-in fee payable and extension leads are available to borrow. Water is available at all visitor and marina berths.

Laundry facilities are located on the ground floor of the harbour office. The machines are token operated, tokens can be purchased from the harbour team.

Weather forecasts are posted daily on the noticeboards outside the harbour office.

Waste and Recycling Please recycle cans, bottles and paper by using the facilities opposite the harbour office. Household waste can be bagged and disposed of by using the wheeled bins adjacent to the harbour office. Batteries and oil can be collected and disposed of by a member of the team. Please do not place either in or by the wheeled bins as they become a magnet for vandals. If you see either beside the bins, please inform a member of the team and they will remove it. Likewise, if the bins become full, please contact us and we will arrange an appropriate alternative for you.

Notices to Mariners are displayed on the noticeboards outside the harbour office and on the pontoons, and are also available to view on our website www.weymouth-harbour.co.uk. Any increased activity in the Harbour not requiring a notice to mariners can also be found on our website and Facebook page.

Fuel Diesel fuel is available from the jetty in the harbour and from mobile mini road tankers. Please check directory pages for local suppliers. The nearest petrol station is on King Street (see map on page 20).

Supermarket and Cashpoints In the town centre there is a Marks and Spencer, Co-Op and Tesco and a selection of delis. A 10-minute walk will take you to an Asda superstore. Cashpoints are located at both Tesco and Asda and other locations within the town centre.

Book Swap Lose yourself in a book while you wait for your laundry, swap one of your finished reads for one in our stock or simply take a book for your journey when you depart from Weymouth. Donations of books also gratefully received.

Wifi is available for some visitor berths opposite the Harbour Office, please ask a member of the team for the code.



Price LIST 2017

A full list of charges is available on the website

Visiting Leisure Craft

Short stay (30 minutes – 4 hours *(first 30 minutes free)*):

Vessels up to 6m LOA	£6.00
Vessels 6m – 12m LOA	£8.00
Vessels over 12m LOA	£10.00

Over 4 hours - up to 24 hours
(per metre or part metre unless otherwise stated):

1 April – 30 September	£2.70
1 October – 31 March	£2.00

Electricity – plug in charge where available per 24 hours:

16 amp supply	£2.50
32 amp supply	£5.00
63 amp supply	£10.00

SPECIAL OFFER

4 nights for 3 – Any vessel staying for three nights will receive the fourth night free of charge (excludes July - August)

* T&C apply, especially in July and August.

Keep visiting our website
www.weymouth-harbour.co.uk to find out about our latest offers or sign up to our e-newsletter by emailing harbournews@dorset.gov.uk

Annual Mooring Fees

Marina berths *(per metre or part metre unless otherwise stated)*:

Craft owned by residents* of Weymouth and Portland Borough Council	£306.55
Craft owned by non residents	£340.62

(there are some twin berths available which will be charged at 80% of the resident or non resident rate)

Chain and sinker fees residents* only (per metre or part metre unless otherwise stated)

Tenders up to 3m	£17.34
Vessels over 3m	£69.78

Winter Storage Afloat
(per metre or part metre unless otherwise stated):

Pre-booked and paid for in advance 1 October – 31 March
(pro rata minimum 2 months)

Outer harbour – without electric	£68.40
Outer harbour – with electric	£92.40

10% surcharge for use of vessel at any time during the period of winter storage afloat.

Extended stay where available; applies 1-30 April and 1-30 September

Without electric	£2.00
With electric	£2.25

*A resident is a person whose main home is in the borough of Weymouth and Portland Borough Council who is on the electoral roll and who is liable for full Council Tax.
(Prices correct at time of going to print)

SPECIAL OFFER

Pocket Guide Loyalty Scheme.

See your Weymouth Harbour Pocket Guide for more details.

Charming

WEYMOUTH HARBOUR

An enchanting 17th-century aura exudes from the Georgian architecture and tranquil waters, depicting a relaxing scene, yet providing all the features of a modern marina and town centre location.

Surrounding the harbour side, an abundance of restaurants, pubs and cafes, many with locally sourced produce and local ales, enable visitors to delve into Dorset's culinary delights whilst enjoying this charming gem of the Jurassic Coast.

'A trip to Weymouth is a joyous time. The object is to enjoy the scenery, the sea, the food, the people and the soothing feeling as you traverse its many streets and walkways. For travellers in the UK it has been a must-visit destination for hundreds of years and should be for hundreds more.'



Portland Bill

& PORTLAND RACES

When sailing west from Weymouth Harbour, it is suggested that craft are at Portland Bill 4 hours after high water Portland in order to gain the best use of the surrounding tides. Portland Bill is approximately 7 miles by sea from Weymouth Harbour entrance and due allowance must be made when planning departure time from here.

Portland Race can be a treacherous place and should always be avoided, particularly during spring tides, but with sensible passage planning the bonus of the tidal effects when running to the west can be considerable.

Approximate distances in nautical miles from Weymouth Harbour to places to visit:	
LULWORTH COVE	7
WORBARROW BAY	10
PORTLAND HARBOUR	3
CHAPMAN'S POOL	15
RINGSTEAD BAY	3

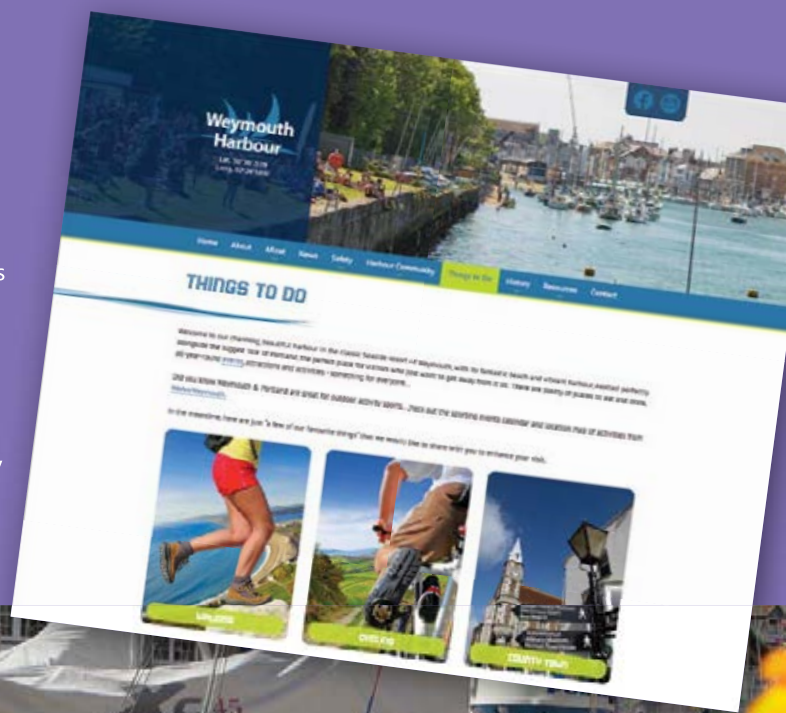


Things to SEE & DO

The harbour is perfectly situated in the centre of Weymouth and is just a stone's throw away from all that the town has to offer.

Whether it's visiting the labyrinth of underground passageways at the historic Nothe Fort, taking in the fantastic views of the Isle of Portland from the peaceful Nothe gardens or just enjoying an ice-cream on the golden, sandy beaches that flank the town, Weymouth has a wide range of attractions to suit all.

Whether you explore by foot or on two wheels, there is a variety of walking and bike routes to discover on our website www.weymouth-harbour.co.uk/thingstodo/



The Rodwell Trail, once a railway line linking Portland to Weymouth, is ideal for walkers and cyclists. It leads to Ferrybridge and on to the stunning 17-mile-long Chesil beach. Behind the beach is the Fleet Lagoon, the largest saline lagoon in the UK and rich in marine species. With a number of cafes and bars en-route, this area is a must-see for the views alone.

If you climb the island of Portland you will see evidence of the quarrying of the famous Portland stone. Visitors can explore the now disused Tout Quarry, where sculptors from around the world have carved images in stone amongst the many paths.

No visit to Portland would be complete without visiting Portland Bill. During the summer months guided tours of the lighthouse are available at certain times, when it is also possible to climb the 153 steps.

Back in Weymouth itself, nature enthusiasts can enjoy some peace and tranquillity and see several species of duck and sedge warblers at the nearby RSPB reserve at Radipole Lake; and strolling further along the Esplanade you'll find Lodmoor RSPB reserve.

From April, those with a head for heights can enjoy the fabulous views seen from the 'Jurassic Skyline' soaring 53 metres above the ground. Its slowly revolving observation deck offers a panoramic vista of the beautiful West Dorset countryside and is open throughout the summer months.

You don't have to be a military enthusiast to enjoy the Nothe Fort, it's a great day out for all the family with lots to see and explore. Located at the entrance to Weymouth Harbour, the Nothe Fort is a labyrinth of underground passageways and outdoor areas with stunning views of the Jurassic Coast. Constructed on three levels, the Fort is filled with displays, mammoth guns and cinema areas that chart the history of this large and magnificent Victorian structure.

Weymouth offers a wide range of attractions for all the family. The Sealife Park and Pirate Adventure Golf can be found at Lodmoor; whilst the Pavilion Theatre, situated just off the harbourside, presents a year-round programme of shows. There's also tenpin bowling; Weymouth Swimming Pool and Gym; and a 9-screen cinema to keep you entertained if the weather turns grey.



YOUR CHANCE TO WIN UP TO
£20,000
EVERY DAY AT GALA BINGO

FREE MEMBERSHIP & ADMISSION

You'll love the buzz x





Weymouth Club, 18 Crescent St,
Weymouth, Dorset DT4 7BX.
Tel: (01305) 785180

Terms and Conditions apply, please ask in club for details. Enjoy the game, please play responsibly.
www.gambleaware.co.uk. Need help?
Call GamCare free on 0800 802 0133.



Great Local Festivals

& EVENTS 2017

From family festivals and sporting challenges to arts and crafts, below are some of the great highlights from over 200 events taking place throughout Weymouth and Portland in 2017.

For the latest event news visit – www.visitweymouth.co.uk

25 - 26 March	Weymouth's Leviathan Maritime Literary Festival
27 - 28 May	Fayre in the Square
3 - 4 June	Wessex Folk Festival
17 - 23 June	Weymouth and Portland Armed Forces Day Celebrations
8 - 9 July	Pommery Dorset Seafood Festival
28 - 30 July	Weymouth Beach Volleyball Classic
15 - 16 August	Weymouth Carnival and Fireworks
9 - 10 September	Waterfest Weymouth
17 September	Ironman 70.3
Oct - Nov	FEAST Weymouth
22 October	Lions Motocross Weekend
5 November	Guy Fawkes Celebrations
25 December	Christmas Day Harbour Swim

All events can be subject to change/cancellation due to weather/operational constraints and conditions. Please confirm event details on www.visit-dorset.com/whats-on before travelling.

Photo: WaterFest Weymouth



Photo: Resort Marketing

TOWN MAP



To: Dorchester, Bristol, London

To: Preston, Dorchester

To: Portland, Bridport, Jurassic Coast (COASTLIX53)



KEY	
	Supermarket
	Parking
	Toilets
	Disabled Toilets
	Tourist Information
	Main Bus Stop
	Pedestrianised
	Main Shopping Areas
	Harbour Walk
	RSPB Nature Walks
	Rodwell Trail
	Slipway



Time to SHOP

Whether you need to stock up on holiday essentials or are looking for that distinctive gift, Weymouth has a large selection of retailers to suit your taste. And with the harbour being perfectly situated at the heart of Weymouth, all of this is within a short stroll from your boat.

Alongside the harbour you will find the local fish market, an angling shop, art galleries, gift shops and, of course, ships' chandlers.

St Thomas, St Mary and Bond Street are the trendiest places to be with high street fashion such as Marks and Spencer, Debenhams and Monsoon, quality jewellers and individual stores to delight in. While side streets such as St Alban Street offer individual boutiques and local shops supplying everything you would need for a day on the beach.

There are also plenty of coffee houses, cafes and bakeries, so why not take the weight off your feet and enjoy a fresh cream tea while you recharge in preparation for the next round of shopping!





- CARS • 4X4 PICKUPS
- VANS • TIPPERS • TRUCKS
- MINIBUSES

book on-line for a discount

www.dorsetvehiclerentals.co.uk

or call Central Reservations free on **08000 51 52 53**

UPWEY SERVICE STATION 727 DORCHESTER ROAD, UPWEY, WEYMOUTH DT3 5LF

Branches Also At Bridport, Dorchester, Gillingham, Yeovil & Wincanton

Time to EAT

Weymouth offers an outstanding assortment of dining experiences: from traditional Dorset cream teas to fine dining, there are eateries to take you through the whole day, from breakfast to dinner and to suit any palate. All of these are just a stone's throw from your mooring or a short stroll into the town.

As you would expect from an historic harbour there are plenty of pubs alongside, and with most offering good food throughout the day, visitors are spoilt for choice. Between October and November many of the local restaurants offer special set menus as part of the annual FEAST Weymouth, an 8-week event celebrating Weymouth's great independent restaurants, pubs and cafés.

Fish features highly on many menus and with some of it landed right on the doorstep it couldn't be fresher. Look out for hand-dived scallops or local lobster, and oysters grown at the Fleet, just a mile or so away, are another must-try.

The continental feel along the harbour continues into Hope Square, with outside seating providing alfresco dining under open sun parasols, while hanging baskets brim with stunning flowers.

Amble along the side roads off the harbour and you'll find Weymouth's popular Italian, Indian and Chinese restaurants, as well as a host of coffee shops, fast food outlets, Thai restaurants and small cafes serving traditional British fare.

Relax on deck and enjoy the town's atmosphere whilst you sample traditional fish and chips from one of the nearby takeaways, then sit back and watch the surroundings as the scene transforms on and off the water.

To search for Dorset eating establishments visit www.visit-dorset.com/food-and-drink




FEAST
WEYMOUTH
celebrating dining out



OPEN ALL DAY EVERY DAY
Market Street, Weymouth DT4 8DD
01305 766386 | www.fishnfritz.co.uk

Nº 4

4 Trinity Road, Weymouth DT4 8TJ
www.no4.restaurant | 01305 780010



FISH • STEAK • MOULES
Eat | Drink | Celebrate
'Local Seafood a Speciality'

MARLBORO
LICENSED
RESTAURANT
& Take-away

Established
1974

10% OFF
All restaurant & take-away meals
on production of this guide

Open All Day 7 Days a Week
Visit the Marlboro for the very best
in take-away food and Fish and
Chips, or take a seat in our popular
and friendly restaurant.
Gluten free options available
(Mon-Thurs) out of season (please ask).
www.marlbوروrestaurant.co.uk

46 St Thomas Street, Weymouth (Near Town Bridge) Tel: (01305) 785700



WATERFEST WEYMOUTH

Waterfest Weymouth will be back with a splash on 9th & 10th September 2017 in and around Weymouth Harbour.

This FREE festival celebrates Weymouth's maritime heritage with sailing, diving, maritime crafts, seafood and shanty music.

Enjoy stepping aboard historic ships and learning about Weymouth's maritime history.

Be amazed at spectacular displays that entertained the crowds last year, and Pirates will be gallivanting around the harbour to add to the lively mix of shanty music and delicious fare from one of the many stalls selling quality seafood - from local crab to mussels and lobster.

Waterfest's lead sponsor is the Weymouth BID in conjunction with other event sponsors.

For more information visit www.weareweymouth.co.uk/Waterfest



/waterfestWeymouth



@waterfestWey



WEYMOUTH
WEAREWEYMOUTH.CO.UK

LOCAL BUSINESS
SUPPORTING
WEYMOUTH



Pommery Dorset SEAFOOD FESTIVAL

A highlight of Weymouth and Portland's event calendar and a weekend not to be missed is the Pommery Dorset Seafood Festival. A wonderful free-to-attend event that attracts over 50,000 visitors each year, be sure to catch the 2017 festival taking place around the harbour on 8th & 9th July.

With approximately 100 stalls, you can spend a leisurely two days meandering around the festival, feasting your eyes and bellies on an enticing array of delicious seafood and amazing champagne, whilst getting the culinary know-how from celebrity chefs.

This award-winning festival scooped two major awards at the Dorset Tourism Awards 2015: Gold for 'Tourism Event of the Year' and the 'Outstanding Contribution to Dorset Tourism'. And to top the celebrations, 2016 also saw them raise £10,600 for their charity partner, The Fishermen's Mission.

For more information visit www.dorsetseafood.co.uk

10TH ANNUAL EVENT!

CHAMPAGNE
POMMERY
REIMS FRANCE

**DORSET
SEAFOOD
FESTIVAL**

Nothe FORT

Overlooking Weymouth Bay and situated above the harbour entrance, the Nothe Fort was built in 1872 by the Royal Engineers with the help of inmates of Portland Prison, although the area itself has been used as a form of defence lookout against possible invasions from as early as 1543.

Constructed of Portland stone, brick and granite, the Fort consists of three levels, comprising magazines with tunnels, casemates and ramparts. It was used to protect Portland Harbour when it was evolving into an important naval base, and played an important role in World War II when the harbour was used as a base by the British and American navies.

It remained in active service until 1956, before being taken over by Weymouth and Portland Borough Council in 1961 then eventually undergoing extensive restoration by the Weymouth Civic Society. It's now open to the public as a museum of coastal defence featuring World War II memorabilia as well as original cannons and guns and British and American WWII vehicles. The Fort encompasses a labyrinth of underground passageways, historical displays and hosts a variety of events throughout the year.

The Nothe Gardens surrounding the Fort are free to enjoy, with spectacular views of Weymouth Bay and the Harbour on one side and views of Portland and Portland Harbour on the other. In fact the Nothe is probably the best place from which to view the Portland Breakwater.

www.nothefort.org.uk



Sandsfoot CASTLE

In the final years of the reign of King Henry VIII, when an invasion of England seemed certain due to tensions between England, France and the Holy Roman Empire, Sandsfoot Castle was constructed as part of the English coastline coastal defences to protect the Weymouth Bay anchorage.

Following its completion in 1542, the intention was to use Sandsfoot Castle to defeat enemy ships with a battery of heavy artillery using an octagonal gun platform linked to a residential blockhouse, although its design meant the protection against an inland attack was minimal.

By 1583 repairs were already needed to its seaward side due to coastal erosion damage 'undermining', with further remedial works needed in 1610/1611. Earthwork defences were built around the

landward side of the Castle in 1623, which today form part of the landscape features of its surrounding gardens. During the English Civil War the Castle was held in turn by Parliament and Royalists, before finally being withdrawn from military service in 1665 and never really seeing any serious action after all.

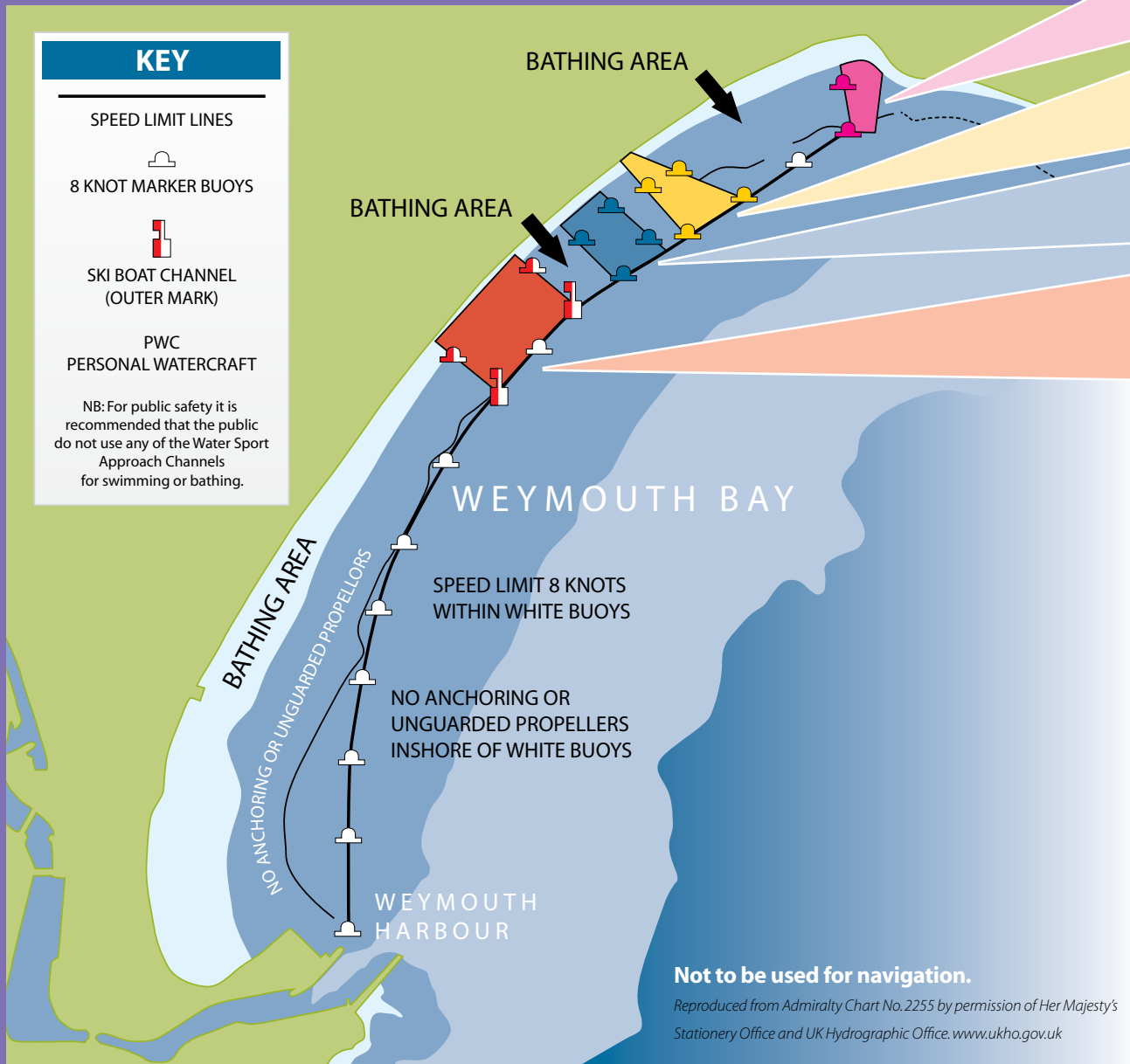
By 1725 Sandsfoot Castle was in ruins, and its stonework was taken for use in local building projects; including, some say, the new Weymouth town bridge. The Castle gun platform was destroyed completely by the 1950s, collapsing into the sea as the unstable clay cliffs eroded, and eventually the ruins were closed to visitors.

Today, after significant repairs between 2009 – 2012 funded by the Heritage Lottery Fund, Sandsfoot Castle is again accessible to the public. And for those visiting Weymouth, it's a popular stop along the Rodwell Trail to pause to take in the views across Weymouth Bay and Portland.

www.sandsfootcastle.org.uk



Weymouth Watersports Access Zones



PWC Lane

Entry / exit lane ONLY, designated for PWC. Please note that there is a 5mph limit at the shore end of the zone.

Sailboard Approach

This channel is for sailboards only. No other vessels should enter this lane at any time.

Anchoring Zone

This zone is designated for anchoring vessels. When proceeding to this zone, please keep to the **8 knot limit**.

Ski Boat Approach

This channel is only for vessels to gain access to the beach to pick up water skiers. Water skiing activities should be kept seaward side of the white 8 knot buoys.

Weymouth Bay Safety Instructions

- All craft should mainly keep to seaward of the white buoys across Weymouth Bay.
- Do not enter and/or attempt to anchor in the bathing areas shown on the map. Propellers and anchors could seriously injure bathers, therefore, common sense and good seamanship dictate that navigation and mooring in bathing areas should always be avoided.
- The water-skiing channel, marked by red and white buoys, is only suitable for water-ski craft to gain access to the beach. Once passengers and water skiers have been collected from the beach all water ski activities should take place seaward of the white buoys.
- Harbour byelaws require water ski boats to have at least two people in the boat whilst engaged in skiing, thus allowing one person to act as lookout astern.
- The jetski channel (marked by red buoys) must only be used to gain access to the beach. After launching, all jetski activities should take place seaward of the white buoys.

Water Sports Permits

A permit is required for any powered aquaplaning activity in Weymouth Bay, including personal water crafting (jet-skiing), waterskiing, wakeboarding and the towing of donuts etc.

Permit Fees

Per Day	£8.50
2 Day (must be consecutive days)	£14.00
Per Week	£28.00
Annual (from Harbour Office only)	£80.00*

*RYA PWC certified £55.00

Permit application forms are available from the Harbour Office and should be returned there when completed. For details of launch sites for PWCs (jet-skis) please contact the Harbour Office. Please note: Portland Harbour is subject to regulations set by Portland Harbour Authority – contact +44(0)1305 824044 for details.

Boat Launching Facilities

(contact the Harbour Office for more details)

- Weymouth Inner Harbour
- Bowleaze Cove, Weymouth
- Overcombe Corner, Weymouth (windsurfing and kayaks only)
- Castletown, Portland
- Ferrybridge, Portland Road

Weymouth Inner Harbour Slipway Fees

Launch and Recover per Day	£10.00
Annual Permit (launch only)	£135.00
Trailer Park per Day	£6.50

(Prices correct at time of going to print)

The Jurassic COAST

Stretching from Orcombe Point, East Devon to Old Harry Rocks, East Dorset, the Jurassic Coast provides 95 miles and 185 million years of Earth history. The stunning coastline spans the Triassic, Jurassic and Cretaceous periods and its entire length of this Natural World Heritage Site can be walked on the South West Coast Path.

To the east of Weymouth there are interesting walks and beaches where you can see the fascinating changes in the rocks, from erosion and fossilised burrows to ancient marine animals, which you don't have to be a geologist to enjoy! Children can imagine the tropical seas and dinosaur-infested swamps that once covered the land; trace fossils around Osmington Mills and, if you're lucky, see dinosaur footprints and trackways in Purbeck.

The famous arch of Durdle Door is one of the Jurassic Coasts well known landmarks, and at Lulworth Cove an extraordinary Fossil Forest can be seen on the cliff edge to the east. The 'doughnut-shaped' structures were made from trees that once grew and were then submerged in swamps.

Above the Fossil Forest lie the Purbeck Beds, a series of rocks that formed when conditions were harsh and hot and where dinosaurs once roamed. Chesil Beach, with the Fleet behind it, is one of the finest barrier beaches in the world and there are still debates over its formation today. The shingle banks link the mainland to Portland, where old quarries provide a glimpse of the historical Portland stone workings.

A project on the Isle of Portland which hopes to make use of these old quarries and bring to life the transition from the prehistoric world is 'Jurassica', a subterranean geological park aiming to showcase paleontological remains including dinosaurs, marine reptiles, marine invertebrates and plants. Keep up to date with the project's progress at www.jurassica.org

Looking west, the beaches around Lyme Regis and nearby Charmouth are world famous for fossils, whilst one of the most dramatic sights along the Jurassic Coast is the stacks at Ladram Bay, East Devon. Formed from caves that over time were hollowed out by the sea, they then became arches which eventually collapsed, forming the stacks we see today. The red colour of both the stacks and the cliffs is due to iron minerals that have weathered over time, telling us that the land was once a hot desert area.

For more information on this significant coastline go to www.jurassiccoast.com



Lulworth Ranges

Danger Area

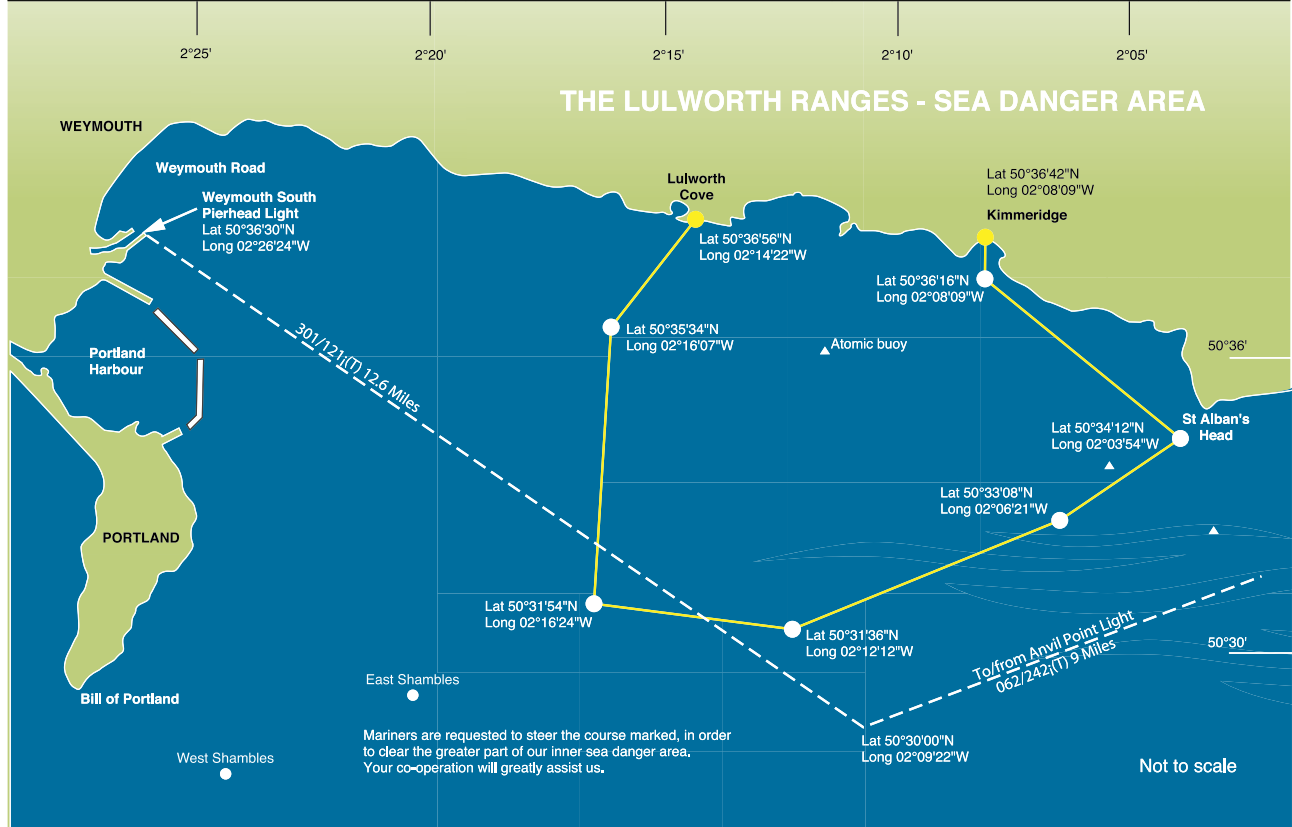
HM Forces train on the Lulworth Ranges and much of this training involves the firing of weapons. During firing times avoid the danger area identified on the chart below.

Normal firing times are:

- Monday-Thursday:** 09.30 – 17.00
- Friday:** 09.30 – 12.30

Exact details of the firing programmes, including weekend and night firing times, are displayed in the Harbour Office. The Lulworth Range Control listens on VHF Channel 8 but also, during firing, range safety boats are on station and listen on VHF Channels 8 and 16. When approaching the area, call range safety craft on VHF Channel 8 to get advice on safe direction and clearance.

For further information and weekend firing times, please contact Range Control on +44(0)1929 404712 during working hours and +44(0)1929 404819 outside of those hours.



Situated in the heart of the Jurassic Coast, England's first natural World Heritage site, Weymouth is the perfect base from which to explore this spectacular coastline.

A short cycle ride westwards around the Nothe Fort and headland leads to the eastern end of the magnificent Chesil Beach. This shingle bank is one of the finest barrier beaches in the world, linking the Isle of Portland to the mainland and forming a shallow, tidal lagoon known as the Fleet. Exploring the Fleet leads to the swannery at Abbotsbury, the only place in the world where you can walk amongst nesting swans.

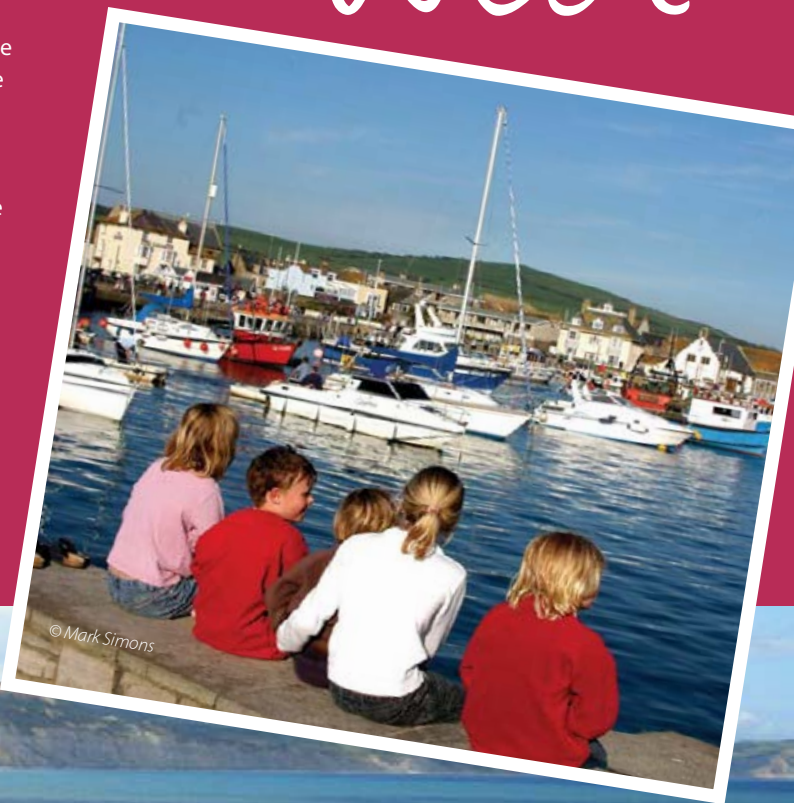
Further afield are the picturesque harbours of West Bay and Lyme Regis. The Victorian village at West Bay is perfect for those visiting with families, with plenty to do such as crab fishing in the harbour.

Renowned for its fossils, its literary links and instantly recognisable harbour wall known as 'The Cobb', it is clear to see why the charming town of Lyme Regis is known as the "Pearl of Dorset".

Visitors' moorings are available at both West Bay and Lyme Regis harbours; their contact details can be found on page 39.

HEADING

West



HEADING East

To the east lies the famous arch of Durdle Door and the picturesque Lulworth Cove. Formed around 140 million years ago by the erosion of softer rock behind the hard Portland limestone, Durdle Door is perhaps the most iconic landmark on the Jurassic Coast. At the foot of the arch lies a sweeping beach that has been used extensively in film and television.

A short hop eastwards leads to the beautiful Lulworth Cove. Its calm, sheltered water is in contrast to the wild surrounding coastline; it's here you will find the world-famous Fossil Forest. The rugged cliffs offer rewarding walks with breathtaking views of Weymouth and Portland back across the Lulworth Banks.



The Community SEAGRASS INITIATIVE

Seagrass is an extremely important habitat for marine life and is home to a rich variety of amazing animals, including seahorses. They also provide many vital services to coastal communities, including being nursery areas for many commercial fisheries species.

Worldwide, seagrass habitats are in rapid decline. Threats like poor water quality and physical disturbance of these sensitive habitats are all contributing factors.

The Community Seagrass Initiative is engaging volunteers to help monitor the health and biodiversity of seagrass beds, with sailors, kayakers, divers and even internet users all being encouraged to take part. The aim is to reduce disturbance of seagrass habitats through raising awareness about these special places.

Our Sailing into Science volunteering programme asks boat users to help us gather vital data on water clarity around seagrass beds. Volunteer Citizen Scientists need no previous experience as all training and equipment is provided—including an Admiralty-style chart of the Weymouth and Portland area showing seagrass locations.

To get involved as a volunteer or to find out more about the work being carried out by the Community Seagrass Initiative in the Weymouth area, please contact the Weymouth project officer, Jessica Mead, on jessica.mead@national-aquarium.co.uk or **01752 680100** option 3.

safety

General

All vessels should hold appropriate third party insurance cover of £2,000,000 minimum.

Large vessels occasionally operate within the harbour. Their powerful thruster units and feathering propellers often cause turbulence that can be hazardous for smaller craft – please keep clear at all times.

It is illegal and dangerous to proceed against traffic signals, which are often used during the manoeuvring of large vessels. Small rowing ferries operate across the harbour in summer (see chart on page 11) please give way to them, giving them a wide berth at a slow speed.

Please store all petrol aboard in metal containers and place adequate fire fighting equipment in position to deal with engine and cooking appliance fires.

Weather

Always check weather conditions before leaving the harbour. A noticeboard indicating the latest inshore waters forecast is displayed outside the Harbour Office (see chart on page 11). An initial announcement for full information broadcasts at 0730 and 1930 are made on VHF CH16 (and MF 2182 KHZ) indicating which VHF channel and MF frequency to listen to. There is then a local information broadcast providing weather messages, gale or strong wind warnings and shipping forecasts for Portland (Selsey Bill – Lyme Regis, Lyme Bay channel VHF 86 and South & East channel VHF 84) every three hours:

0730 1030 1330 1630 **1930** 2230 (UTC)

Pre-planning

For long voyages, please notify the Maritime & Coastguard Agency. For all shorter trips it is advisable to let a friend or relative know what you are doing and when you expect to return.

Coastwatch Portland Bill

The Portland Bill Surveillance Station was opened by the National Coastwatch Institution in 1997. Some 40 volunteers maintain watches over Portland Bill, the Portland Race, Weymouth Bay and Lyme Bay from 0700 – 1900 every day of the year. The station relies entirely on voluntary contributions and is there for your safety. More information is available at the Harbour Office.

RNLI ADVICE ONBOARD

Every year the lifeboats respond to an increasing number of incidents, many of which could have been prevented with simple safety precautions.

Make your boat as safe as possible by booking a free RNLI Advice Onboard check.

What is Advice Onboard?

This free, friendly and confidential service looks at the safety aspects of your boat. Conducted by a highly trained volunteer, Advice Onboard is a personal, face-to-face safety advice service that takes place onboard your craft. Visits are tailored to your vessel and the type of boating you do and include:

- a free, independent discussion on boat safety equipment
- an opportunity to discuss safety matters, tapping into a wealth of knowledge and experience
- a sticker showing your support for the scheme
- a copy of the completed form, which is a written summary of the main points discussed.

The whole Advice Onboard service is free. The service is available in all parts of the UK and the RoI, at your convenience and to anyone who goes to sea in almost any type of leisure craft. For more information or to book a session visit rnli.org/safety/respect-the-water/face-to-face.advice/pages/advice-on-board.aspx



yacht Clubs OF WEYMOUTH

YCW is the umbrella organisation for: -

- Royal Dorset Yacht Club
- Royal Naval Sailing Association (Portland)
- Castle Cove Sailing Club
- Weymouth and Portland Cruising Association
- Weymouth Sailing Club

It co-ordinates the activities of these clubs and organises larger events that are outside the scope of an individual club, especially the Weymouth Regatta and major championships.

Royal Dorset Yacht Club

Situated on Custom House Quay, near the Harbour Master's Office, the club welcomes visiting yachtsmen and women to its first floor clubhouse, which has stunning views over Weymouth Harbour. There's excellent food and a well stocked bar featuring local real ales. Open daily throughout the summer.

T: +44(0)1305 786258

E: info@royal-dorset.com

W: www.royal-dorset.com

Address: 11, Custom House Quay, Weymouth DT4 8BG

Castle Cove Sailing Club

Castle Cove Sailing Club is a thriving, long established, family club, based in Portland Harbour and run by members for members. The club is situated at the end of Old Castle Road, Weymouth and visiting yachtsmen and women are always welcome. During the summer, on race nights, the bar and galley are open and, with notice, both can be made available at other times. For information please contact the club:

T: +44(0)1305 783708

W: www.ccsc.org.uk

Weymouth Sailing Club

With excellent food and a very good bar, not to mention the view of the harbour, the Club is open to all visiting yachtsmen and women, please check opening times.

T: +44(0)1305 785481

E: mail@wsc.org.uk

W: www.wsc.org.uk

Address: Nothe Parade, Weymouth DT4 8TX

Weymouth and Portland Cruising Association (WPCA)

The Weymouth and Portland Cruising Association was formed in 1984 to meet the needs of sailing and motor boat owners who wanted to cruise in company and meet like-minded seafarers. We meet every Tuesday evening at Castle Cove Sailing Club for a social get-together or visiting speaker's talk. Visiting yachtsmen are made very welcome. We have a number of swinging moorings in Portland Harbour available for members. For more details contact Michael Gregory:

T: +44(0)1305 889165

E: info.wpcruising.org@gmail.com

W: www.wpcruising.org.uk



useful Information and contacts

When dialling from outside of the United Kingdom, please use the international dialling code +44.

Non-Emergencies

Doctors	01305 774466
Dentist NHS.....	111
Dorset Police.....	01305 222222
Weymouth Hospital.....	01305 760022

Port & Customs

Port Health Authority	01305 838432
HM Customs Advice Line.....	0845 0109000
HM Customs Yacht Arrivals & Departures.....	0845 7231110
Portland Port.....	01305 824044

Nautical

Weymouth Harbour Office	01305 838423
Castle Cove Sailing Club	01305 783708
Dean & Reddyhoff, Weymouth Marina	01305 767576
Royal Dorset Yacht Club.....	01305 786258
Weymouth Sailing Club.....	01305 785481
Coastwatch Portland Bill	01305 860178 / VHF Channel 65
Weymouth & Portland Cruising Association.....	01305 889165

Taxis

Bee Cars	01305 775151
Fleetline	01305 777333
Weyline	01305 777777

Cycle Hire

Weymouth Bike Hire.....	07548 254634
-------------------------	--------------

Public Transport

First.....	0870 0106022
National Rail Enquiries	08457 484950
South West Coaches	01305 823039
Traveline	0871 2002233

Buses to Portland leave from a bus stop at the King's Statue. Services to Dorchester, Abbotsbury and Bridport depart from bus stops on the Esplanade (see map on page 20) A regular double-decker bus service (COASTLINX53) travels the Jurassic Coastline, allowing passengers to hop on and off at any of the stops along its route between Poole & Exeter.

The railway station is situated in King Street. Trains depart for London twice hourly (via Dorchester, Bournemouth & Southampton) and for Bristol (via Dorchester and Yeovil Pen Mill) several times each day.

Small ferries leave Weymouth Harbour for Portland Castle, Marina and Weymouth & Portland National Sailing Academy. Please call 01305 785000 or visit www.coastlinecruises.com for details.

West Bay Harbour

Telephone no.	01308 423222
Mobile.	07870240636
VHF Marine Channels 16 & 11 (Listen & Work)	

Lyme Regis Harbour

Telephone no.	01297 442137
Mobile.	07870 240645
VHF Marine Channels 16 & 14 (Listen & Work)	

Solent Coastguard

Telephone no.	02392 552100
VHF Marine Channel 67 (Listen & Work)	

Useful Websites

www.weymouth-harbour.co.uk
www.dorsetforyou.com/weymouthandportland
www.visitweymouth.co.uk
www.jurassiccoast.org
www.dorsetseafood.co.uk
www.visit-dorset.com/food-and-drink
<http://rnli.org/Pages/default.aspx>

Marine Services AND SALES

The marine service industry has always had a strong presence in the borough of Weymouth and Portland, and an increasing number of businesses are available to cater for all your chandlery needs.

Following the departure of the Royal Navy from Portland in 1995, the waters around Weymouth & Portland became a magnet for sport divers, windsurfers and leisure craft owners as space was created to build on the existing water sports activities. Interest has continued to grow in this thriving sector of the local economy.

Osprey Quay is home to a number of large marine industry employers, and companies such as Sunseeker have invested heavily in the area; for example, their luxurious motor yacht 'Predator 108' - as featured in the Bond movie 'Casino Royale' - was built at Osprey Quay in Portland after the company developed new manufacturing facilities there.

The 600 berths provided by Osprey Quay, in addition to the 800 or so berths in Weymouth, no doubt provide a sizable source of trade for those in the marine leisure sector.

The South West Regional Development Agency investment in the regeneration of the former Royal Naval Air Station at Portland, which included the development at Osprey Quay, a low carbon housing project and a training centre for the Royal Yachting Association, are just a few of the schemes that continue to create jobs and add momentum to the rapidly expanding local marine industry.

The following pages offer a selection of businesses able to assist readers with everything from chandlery, sail making and engineering to insurance and yacht brokerage.



A.D. GORDON

MODERN & TRADITIONAL YACHT RIGGING (PORTLAND)

Authorised Seldén dealer • Z Spar sparring partner

Hand splicing in Wire and Rope

N.D.T. Rigging Terminal Testing • Commercial Rigging

Talurit Splicing • Roll Swaging

MARLOW ROPES

Tel/Fax: 01305 821569 Mobile: 07774 633419 Email: adgrigging@talktalk.net

Clark's BOATWORKS LTD

CROWN WHARF, 1 - 5 CASTLETOWN, PORTLAND DT5 1BD

- Boat storage with facilities • Emergency boat lifts
- Commercial & leisure boat repairs
- Traditional wooden boat restoration specialists
- Complete refitting & refurbishments undertaken
- Building of all types of boats & yachts
- Osmosis Centre • Routine maintenance work



LONGEST ESTABLISHED LOCAL BOAT BUILDER
A FAMILY RUN BUSINESS WITH THE PERSONAL TOUCH

Tel: 01305 860 265 • Tim: 07836 314 025 • Jerry 07879 894 688 • Ryan 07887 875 691

www.clarksboatworks.co.uk



moatt sails

TELE: 01305 824254
MOBI: 07833 383 221

not just a sailmaker

EMAIL: SKMOATT@BTCONNECT.COM



- NEW SAILS AND REPAIRS
- WINTER OVERHAULS
- LAUNDRY
- COVERS, CANOPIES AND SUN SHADES
- STORAGE

INNOVATION, PROBLEM SOLVING & QUALITY PRODUCTS

UNIT 23 NAVIGATOR BUSINESS PARK, OSPREY QUAY, PORTLAND, DT5 1PY

Sail Maker

LIFERAFT HIRE • LIFERAFT & DINGHY SERVICING

"You have got to admit, Premium really look after their customers"

Send for our FREE info pack and depot list



0800 243673

info@liferrafts.com

www.liferrafts.com

All kinds of safety equipment available at competitive prices.

Liferaft House, Burnham-on-Crouch, Essex. CMO 8TE

BHmarine

RYA Training, Own Boat Tuition,
Yacht Service Management, Boat Deliveries

07515 663799

WWW.BHMARINE.CO.UK



info@oceanelectrics.co.uk | Tel: 07968139570

www.oceanelectrics.co.uk

10A CUSTOM HOUSE QUAY,
WEYMOUTH, DORSET DT48BG

ELECTRICAL/ELECTRONIC SALES, INSTALLATIONS AND SERVICE

- Marine Electrical & Electronic Installations
- Commercial Electrical Installations & Maintenance
- Marine Electronics
- Service & Repairs
- Raymarine Authorised Dealer



DAN STUTTLE MARINE SERVICES

Marine engine sales, service, repairs, spares, & new installations.

BETA MARINE
SALES & SERVICE
TOTAL OILS

Marine Workshops, Cove Passage,
Cove Row, Weymouth, Dorset DT4 8TT
(Just behind Bussells Chandlers)

Mobile 24h : 07973 325 180
dan.stuttle@gmail.com





MECHANICAL SERVICES

MARINE

NINETEEN
MERESIDE
PORTLAND
DORSET
DT5 1PY

01305 779379

info@mechanicalservicesltd.co.uk

- **VOLVO PENTA** & **YAMAHA** authorized dealers.
- Service/Sales/ Maintenance of outboard /inboards
- Repair, Refit and Insurance work
- Marine electrics and electronics
- Workshop and Mobile Service.
- Winter Service, Antifouling, Polish and re-launch

LeeSan
Marine • Welfare • Leisure

**Toilet, Tank, Deck Fittings, Hoses,
Clips, Gauges, Vent Filters
and everything you need
Plus Advice & Guidance**

T: 01295 770000
sales@leesan.com

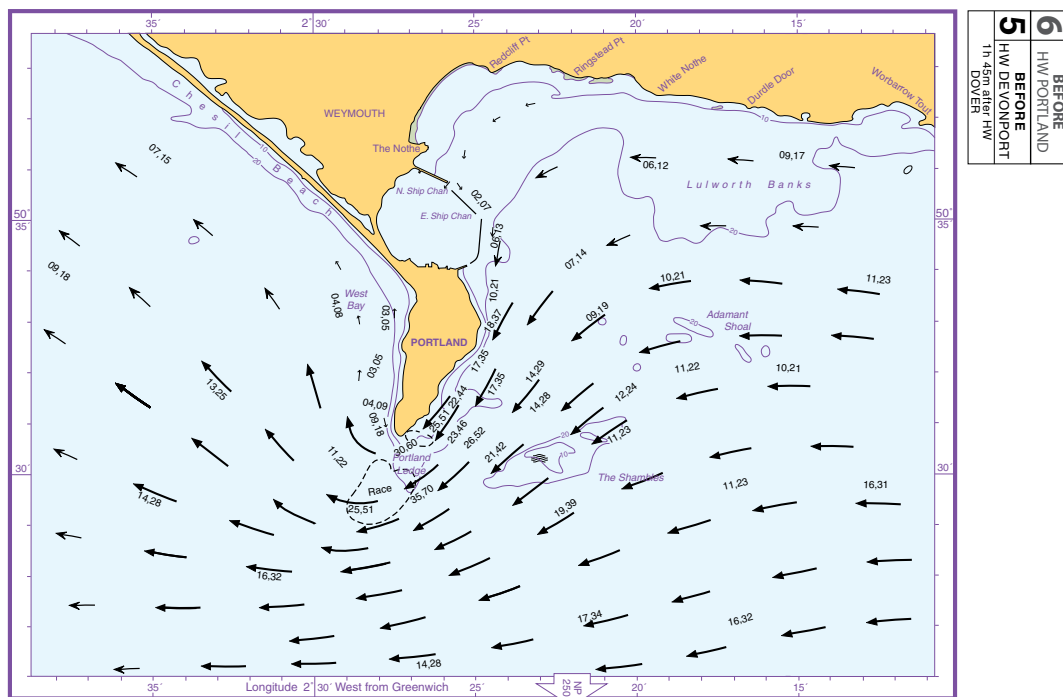
Website Discount Code: WH17

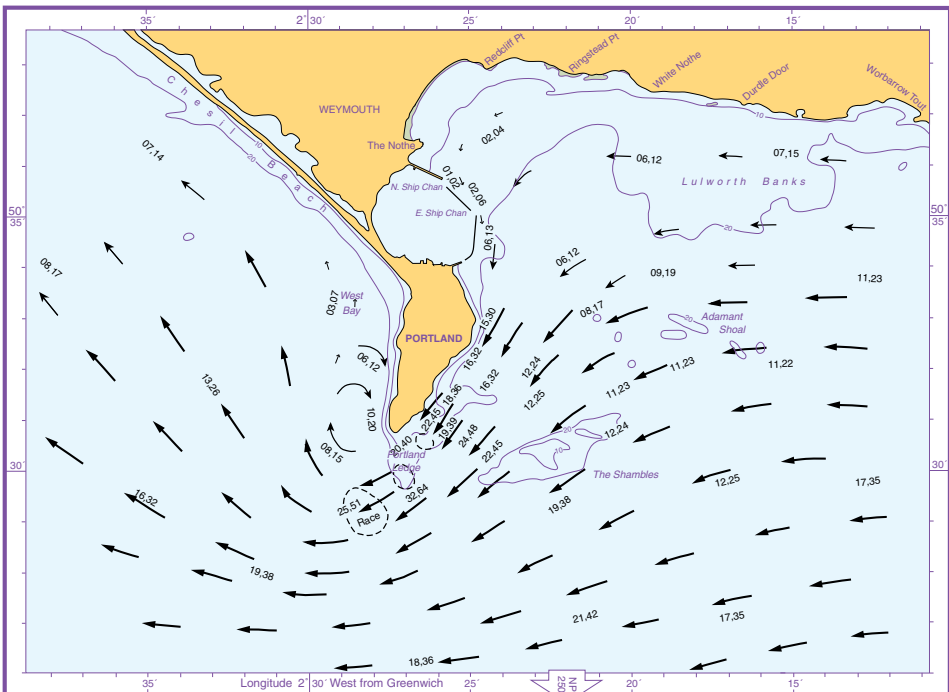
Tidal Streams

PORTLAND

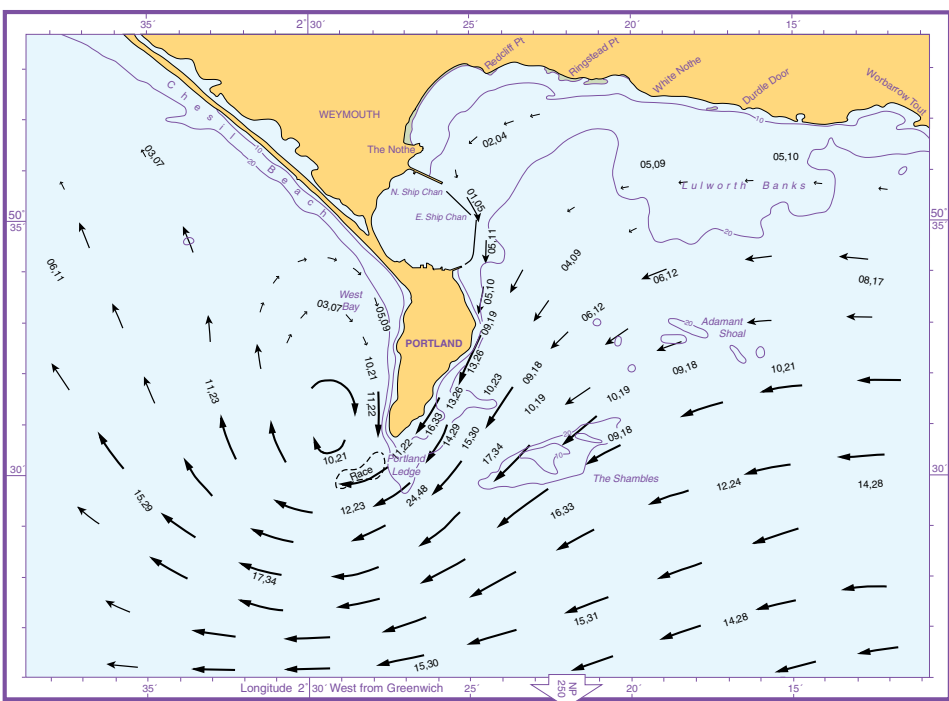
The Tidal Stream Atlases show the rate and set of tidal streams in the local area. They are based on the time of High Water at Devonport, Plymouth and show the predicted tidal stream at hourly intervals. High Water Devonport is 1 hour before High Water Portland. The tide times for Portland

are given at page 50. The set is shown by arrows graded in weight and, where possible, in length to indicate the rate. The figures, against the arrows, give the mean rates in tenths of a knot for Neaps and Springs tides. Inshore eddies are rarely shown in detail due to the limitations of scale.





5	BEFORE HW PORTLAND
4	BEFORE HW DEVONPORT 2h 45m after HW DOVER



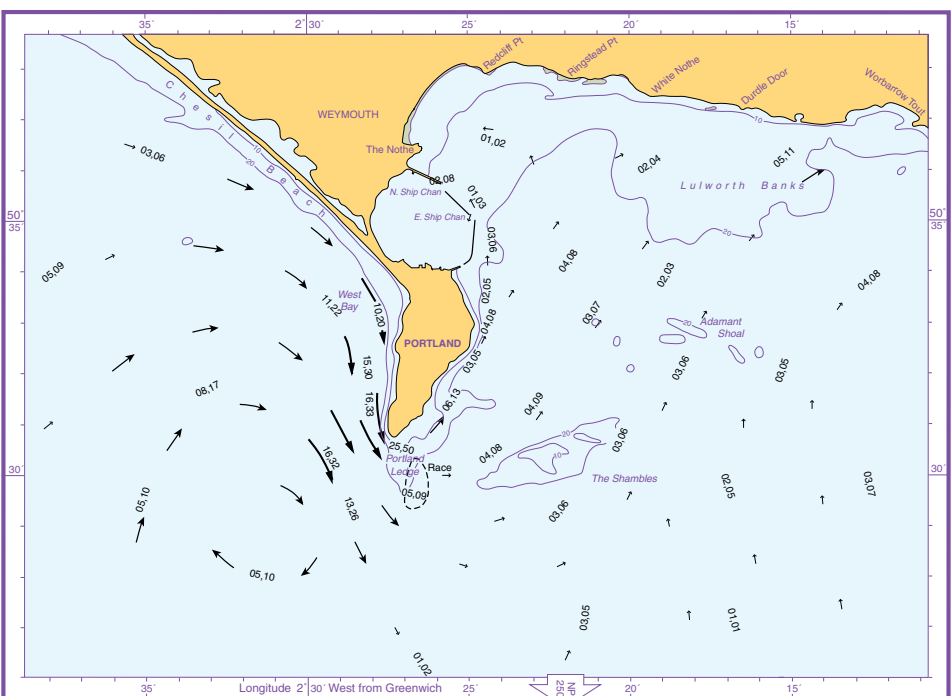
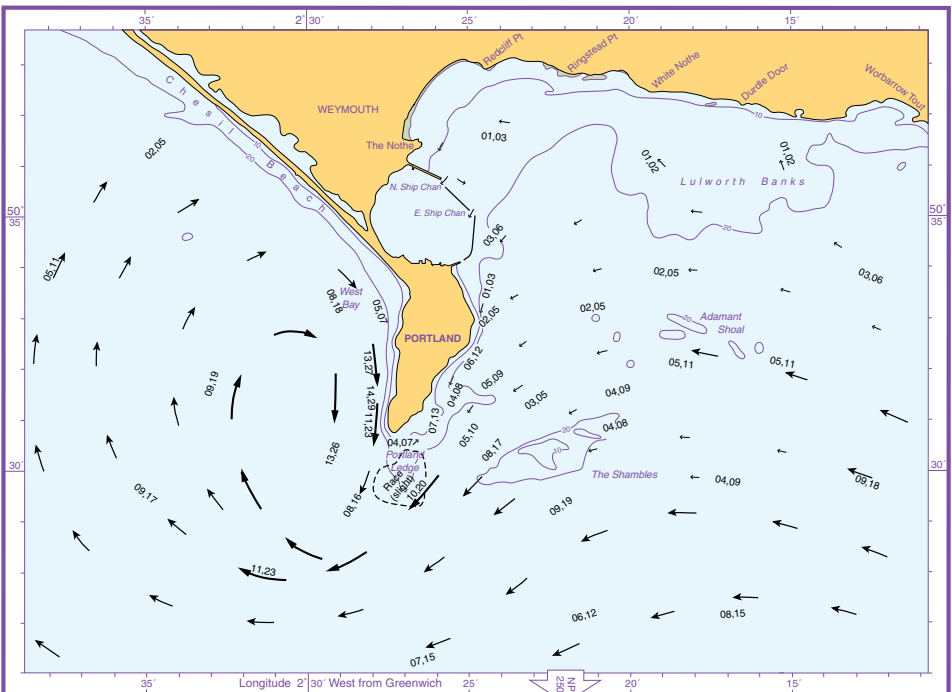
4	BEFORE HW PORTLAND
3	BEFORE HW DEVONPORT 3h 45m after HW DOVER

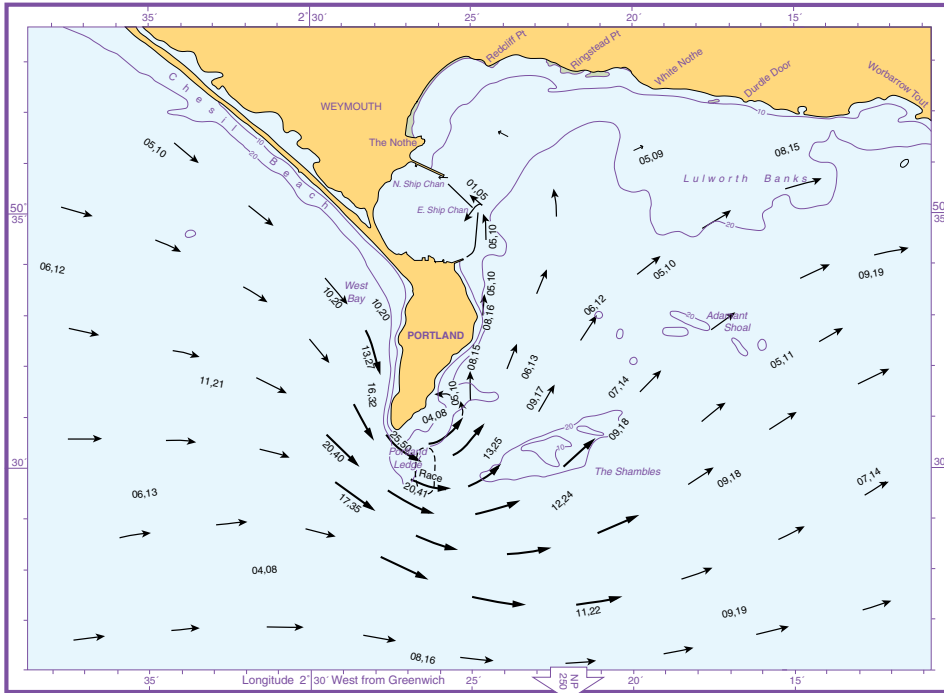
© Crown Copyright and/or database rights. Reproduced by permission of the Controller of Her Majesty's Stationery Office and the UK Hydrographic Office (www.ukhgov.uk).

© Crown Copyright and/or database rights. Reproduced by permission of the Controller of Her Majesty's Stationery Office and the UK Hydrographic Office (www.ukhgo.gov.uk).

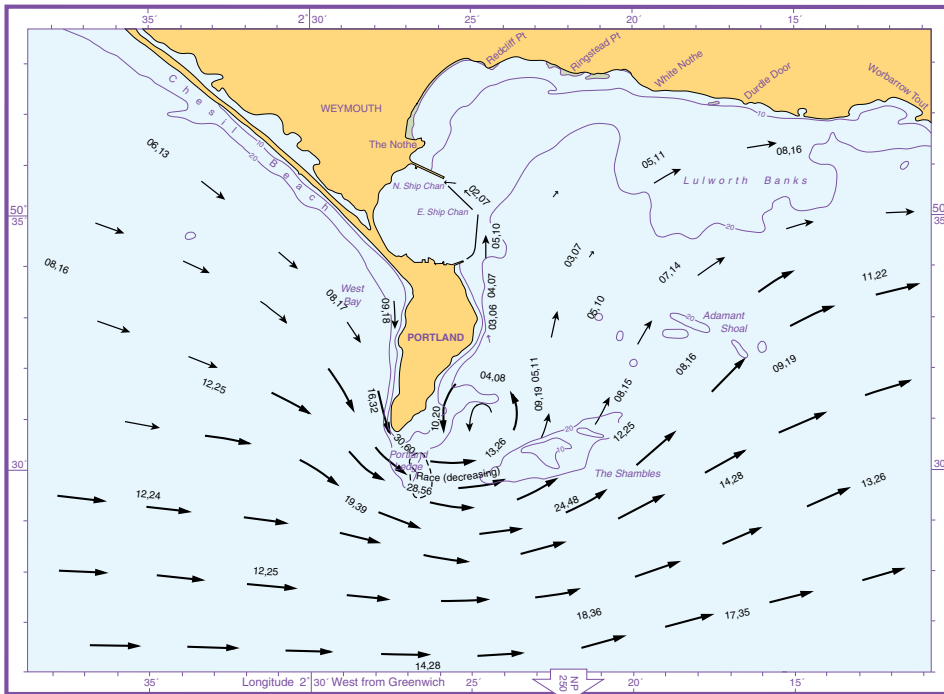
3	BEFORE HW PORTLAND
2	BEFORE HW DEVONPORT 4h 45m after HW DOVER

2	BEFORE HW PORTLAND
1	BEFORE HW DEVONPORT 5h 45m after HW DOVER





1	BEFORE
	HW PORTLAND
	HW DEVONPORT
	5h 40m before HW
	DOVER



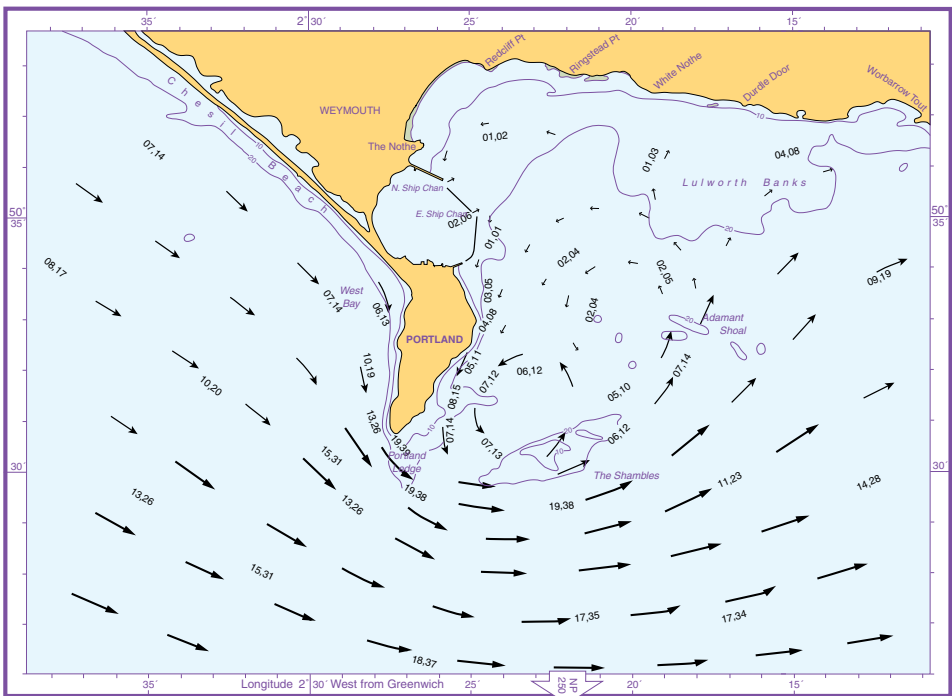
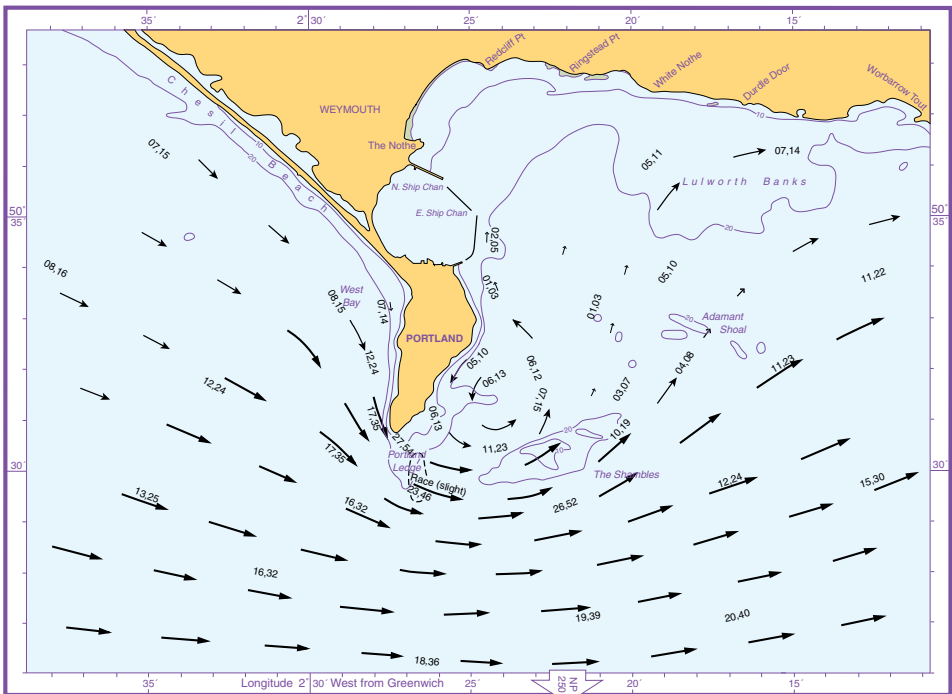
1	HW PORTLAND
	AFTER
	HW DEVONPORT
	4h 40m before HW
	DOVER

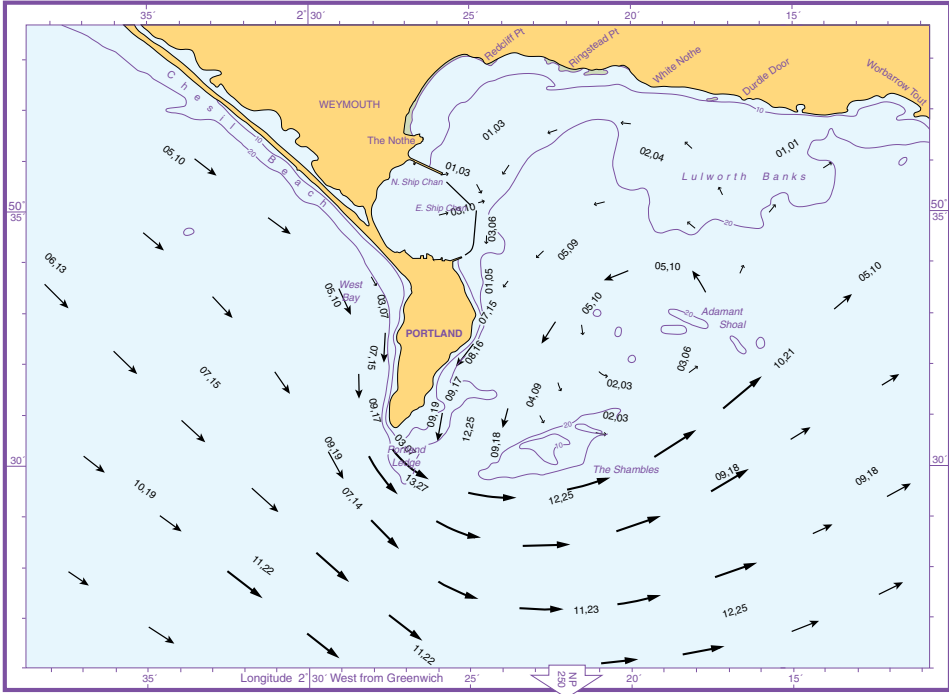
© Crown Copyright and/or database rights. Reproduced by permission of the Controller of Her Majesty's Stationery Office and the UK Hydrographic Office (www.ukhgov.uk).

© Crown Copyright and/or database rights. Reproduced by permission of the Controller of Her Majesty's Stationery Office and the UK Hydrographic Office (www.ukhgo.gov.uk).

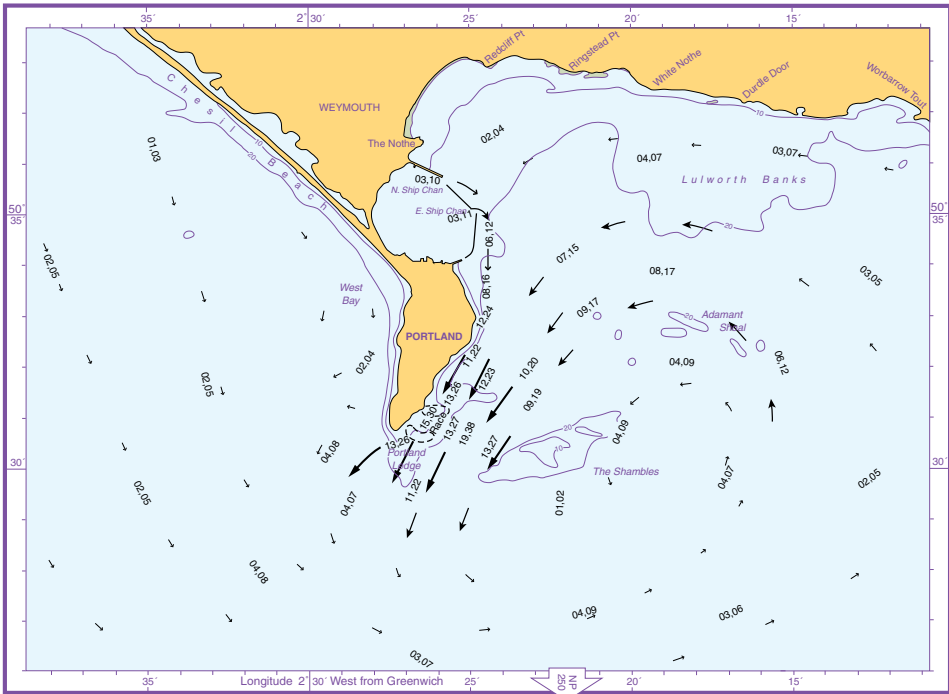
1	AFTER HW PORTLAND AND AFTER HW DEVONPORT 3h 40m before HW DOVER
----------	--

2	AFTER HW PORTLAND AND AFTER HW DEVONPORT 2h 40m before HW DOVER
----------	--





3	AFTER HW PORTLAND
4	AFTER HW DEVONPORT 1h 40m before HW DOVER



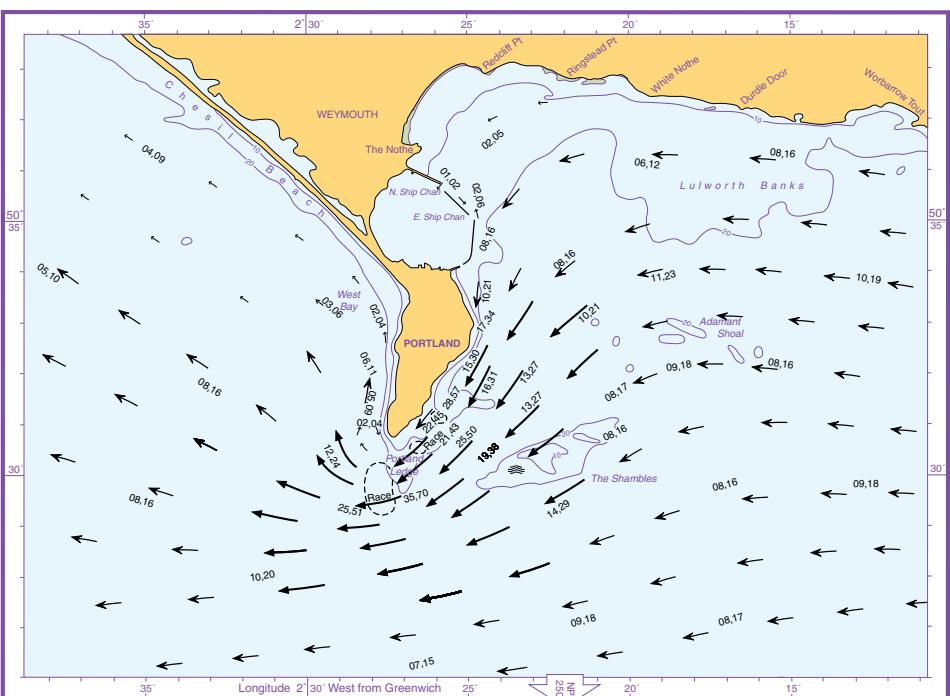
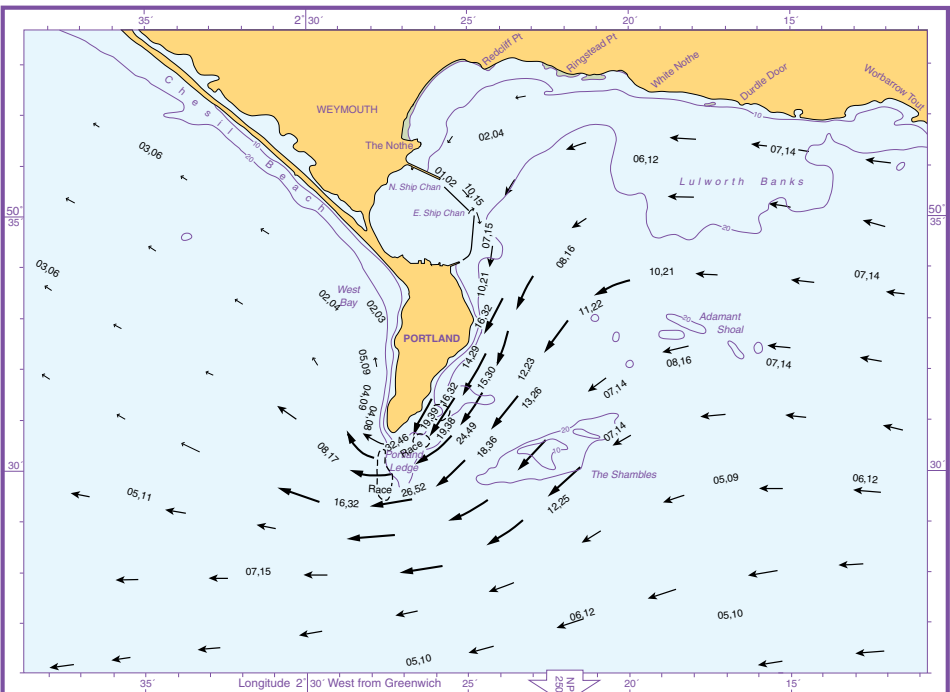
4	AFTER HW PORTLAND
5	AFTER HW DEVONPORT 0h 40m before HW DOVER

© Crown Copyright and/or database rights. Reproduced by permission of the Controller of Her Majesty's Stationery Office and the UK Hydrographic Office (www.ukhgov.uk).

© Crown Copyright and/or database rights. Reproduced by permission of the Controller of Her Majesty's Stationery Office and the UK Hydrographic Office (www.ukhgo.gov.uk).

5	AFTER HW PORTLAND
6	AFTER HW DEVONPORT 0h 20m after HW DOVER

6	AFTER HW PORTLAND
6	BEFORE HW DEVONPORT 0h 45m after HW DOVER



Tide Tables - PORTLAND

LAT 50°34'N LONG 2°26'W
Time zone UT(GMT)

January

Time	m	Time	m
1	0056 0.4	16	0139 0.3
SU	0821 2.1	M	0912 2.2
	1323 0.4	M	1405 0.3
	2040 1.8		2142 2.0
2	0133 0.4	17	0217 0.4
M	0851 2.0	TU	0946 2.1
	1402 0.3		1445 0.4
	2113 1.8		2211 1.8
3	0211 0.4	18	0253 0.5
TU	0926 1.9	W	1018 1.9
	1443 0.3		1525 0.5
	2151 1.7		2241 1.6
4	0252 0.5	19	0327 0.6
W	1006 1.8	TH	1051 1.7
	1529 0.4	Ⓢ	1602 0.6
	2236 1.6		2315 1.5
5	0337 0.5	20	0356 0.8
TH	1055 1.7	F	1129 1.5
Ⓢ	1621 0.4		1636 0.7
	2331 1.5		2359 1.4
6	0434 0.6	21	0435 0.9
F	1156 1.6	SA	1217 1.4
	1720 0.5		1721 0.8
7	0045 1.5	22	0106 1.3
SA	0541 0.7	SU	0652 1.3
	1319 1.5		1331 0.9
	2053 0.7		1924 0.8
8	0209 1.5	23	0240 1.4
SU	0656 0.8	M	0759 0.8
	1440 1.6		1502 1.3
	1945 0.6		2021 0.7
9	0318 1.7	24	0351 1.6
M	0819 0.7	TU	0853 0.7
	1548 1.7		1613 1.5
	2100 0.5		2113 0.6
10	0419 1.9	25	0444 1.7
TU	0931 0.6	W	0944 0.6
	1653 1.8		1709 1.6
	2159 0.4		2201 0.5
11	0516 2.0	26	0532 1.9
W	1029 0.5	TH	1033 0.5
	1755 1.9		1759 1.7
	2250 0.3		2247 0.4
12	0609 2.2	27	0617 2.0
TH	1119 0.4	F	1118 0.4
Ⓢ	1851 2.0		1844 1.8
	2337 0.3		2329 0.4
13	0659 2.3	28	0659 2.3
F	1204 0.3	SA	1158 0.3
	1945 2.1	Ⓢ	1927 1.9
14	0019 0.2	29	0008 0.3
SA	0748 2.3	SU	0740 2.1
	1245 0.2		1235 0.3
	2033 2.1		2005 2.0
15	0100 0.2	30	0046 0.2
SU	0833 2.3	M	0815 2.1
	1326 0.2		1312 0.2
	2111 2.1		2035 1.9

February

Time	m	Time	m
1	0202 0.2	16	0225 0.3
W	0917 2.0	TH	0949 1.9
	1430 0.2		1446 0.4
	2137 1.8		2205 1.7
2	0241 0.3	17	0251 0.5
TH	0953 1.9	F	1017 1.7
	1512 0.2		1510 0.5
	2216 1.7		2232 1.6
3	0321 0.4	18	0314 0.6
F	1036 1.8	SA	1048 1.5
	1557 0.3	Ⓢ	1534 0.5
	2302 1.6	Ⓢ	2306 1.4
4	0406 0.5	19	0348 0.7
SA	1129 1.6	SU	1125 1.4
Ⓢ	1649 0.5		1614 0.6
			2349 1.4
5	0003 1.5	20	0443 0.8
SU	0506 0.6	M	1217 1.3
	1246 1.4		1713 0.7
	2022 0.7	21	0059 1.3
6	0136 1.4	TU	0739 0.8
M	0624 0.8		1352 1.2
	1422 1.4		1953 0.8
	1920 0.7	22	0251 1.4
7	0257 1.5	W	0833 0.7
TU	1139 0.6		1530 1.3
	1536 1.5		2048 0.7
	2054 0.6	23	0405 1.5
8	0403 1.7	TH	0923 0.6
W	0941 0.6		1639 1.5
	1643 1.6		2137 0.5
	2150 0.5	24	0501 1.7
9	0503 1.9	F	1011 0.5
TH	1026 0.5		1734 1.7
	1745 1.8		2225 0.4
	2239 0.4	25	0552 1.9
10	0557 2.1	SA	1057 0.3
F	1111 0.3		1824 1.8
	1841 2.0		2310 0.3
	2324 0.2	26	0639 2.1
11	0647 2.2	SU	1138 0.2
SA	1152 0.2	Ⓢ	1911 2.0
Ⓢ	1931 2.1	Ⓢ	2351 0.2
12	0005 0.2	27	0724 2.2
SU	0735 2.3	M	1217 0.1
	1230 0.1		1954 2.0
	2016 2.1	28	0030 0.1
13	0043 0.1	TU	0806 2.2
M	0818 2.3		1255 0.0
	1307 0.1		2030 2.1
	2051 2.1	14	0119 0.1
14	0119 0.1	TU	0853 2.2
TU	1342 0.1		2117 2.0
	2117 2.0	15	0153 0.2
15	0153 0.2	W	0921 2.1
W	1416 0.2		2140 1.9
	2140 1.9		

March

Time	m	Time	m
1	0109 0.1	16	0127 0.1
W	0838 2.2	TH	0853 2.0
	1333 0.0		1346 0.2
	2054 2.0		2110 1.9
2	0147 0.1	17	0156 0.2
TH	0906 2.1	F	0919 1.9
	1412 0.1		1411 0.3
	2122 2.0		2133 1.8
3	0224 0.1	18	0220 0.4
F	0940 2.0	SA	0946 1.7
	1451 0.2		1432 0.4
	2157 1.9		2158 1.6
4	0302 0.3	19	0243 0.5
SA	1021 1.8	SU	1014 1.5
	1533 0.3		1456 0.5
	2240 1.7		2226 1.5
5	0343 0.4	20	0314 0.5
SU	1111 1.6	M	1049 1.4
Ⓢ	1621 0.5	Ⓢ	1534 0.6
	2333 1.5		2304 1.4
6	0437 0.6	21	0405 0.7
M	1229 1.4	TU	1138 1.3
	1725 0.7		1633 0.7
7	0109 1.4	22	0001 1.3
TU	0604 0.8	W	0725 0.8
	1413 1.3		1252 1.2
	1912 0.7		1747 0.7
8	0241 1.4	23	0145 1.3
W	1128 0.6	TH	0814 0.7
	1527 1.4		1450 1.3
	2039 0.7		2020 0.7
9	0349 1.6	24	0323 1.5
TH	0928 0.6	F	0900 0.5
	1631 1.6		1604 1.4
	2133 0.5		2111 0.6
10	0449 1.8	25	0427 1.7
F	1010 0.4	SA	0945 0.4
	1729 1.8		1703 1.6
	2221 0.4		2159 0.4
11	0542 2.0	26	0523 1.9
SA	1053 0.3	SU	1029 0.3
	1820 2.0		1757 1.8
	2306 0.2		2244 0.3
12	0631 2.1	27	0613 2.0
SU	1133 0.2	M	1113 0.2
Ⓢ	1907 2.1		1846 2.0
	2346 0.1		2329 0.2
13	0717 2.2	28	0701 2.2
M	1210 0.1	TU	1154 0.0
	1950 2.1	Ⓢ	1933 2.1
14	0022 0.1	29	0009 0.1
TU	0757 2.2	W	0747 2.3
	1243 0.1		1233 0.0
	2025 2.1		2013 2.2
15	0056 0.1	30	0049 0.0
W	0828 2.1	TH	0824 2.3
	1315 0.1		1312 0.0
	2049 2.0		2042 2.2

April

Time	m	Time	m
1	0206 0.1	16	0154 0.3
SA	0928 2.0	SU	0919 1.7
	1430 0.2		1402 0.4
	2143 2.0		2130 1.7
2	0245 0.2	17	0219 0.4
SU	1010 1.8	M	0947 1.5
	1512 0.3		1428 0.4
	2225 1.8		2156 1.6
3	0328 0.4	18	0250 0.5
M	1103 1.6	TU	1024 1.4
Ⓢ	1600 0.5		1503 0.5
	2317 1.6		2236 1.5
4	0425 0.6	19	0339 0.6
TU	1228 1.4	W	1114 1.3
Ⓢ	1708 0.7	Ⓢ	1602 0.6
			2332 1.4
5	0048 1.4	20	0712 0.8
W	0605 0.8	TH	1221 1.2
	1401 1.3		1718 0.7
	1847 0.8	21	0048 1.4
6	0225 1.4	F	0752 0.7
TH	0811 0.7		1410 1.3
	1512 1.4		1843 0.7
	2007 0.7	22	0239 1.4
7	0332 1.6	SA	0832 0.5
F	0857 0.6		1528 1.5
	1612 1.6		2034 0.6
	2105 0.6	23	0349 1.6
8	0429 1.8	SU	0914 0.4
SA	0942 0.4		1629 1.7
	1705 1.8		2126 0.5
	2155 0.4	24	0448 1.8
9	0521 1.9	M	0958 0.3
SU	1025 0.3		1724 1.9
	1754 1.9		2214 0.3
	2240 0.3	25	0542 2.0
10	0608 2.1	TU	1043 0.1
M	1106 0.2		1815 2.0
	1839 2.1		2301 0.2
	2321 0.2	26	0632 2.2
11	0652 2.1	W	1128 0.1
TU	1142 0.1	Ⓢ	1903 2.2
Ⓢ	1920 2.1	Ⓢ	2346 0.1
	2357 0.1	27	0719 2.3
12	0730 2.1	TH	1210 0.0
W	1216 0.1		1946 2.3
	1954 2.1	28	0028 0.1
13	0030 0.1	F	0803 2.3
TH	0759 2.1		1250 0.0
	1247 0.1		2024 2.3
	2019 2.0	29	0108 0.1
14	0102 0.2	SA	0843 2.2
F	0825 2.0		1331 0.1
	1316 0.2		2058 2.2
	2043 1.9	30	0149 0.1
15	0130 0.3	SU	0924 2.1
SA	0852 1.8		1412 0.2
	1341 0.3		2136 2.1
	2107 1.8		

Shaded areas are British Summer Time - please add one hour to time shown.

LOW WATERS - Important note. Double low waters occur at Portland. The predictions are for the first low water. The second low water occurs from 3 to 4 hours later and may, at springs, on occasions be lower than the first.

May

Time	m	Time	m
1 M	0231 0.3 1009 1.9 1456 0.4 2219 1.9	16 TU	0203 0.4 0928 1.6 1411 0.4 2139 1.6
2 TU	0319 0.5 1103 1.6 1547 0.6 2310 1.7	17 W	0239 0.5 1006 1.5 1448 0.5 2219 1.6
3 W	0421 0.6 1217 1.4 1652 0.8	18 TH	0327 0.5 1055 1.4 1542 0.6 2312 1.5
4 TH	0024 1.5 0542 0.7 1341 1.4 1809 0.8	19 F	0431 0.6 1157 1.3 1655 0.7
5 F	0158 1.5 0703 0.7 1449 1.5 1921 0.8	20 SA	0017 1.4 0543 0.6 1323 1.3 1809 0.7
6 SA	0305 1.6 0809 0.6 1546 1.6 2023 0.7	21 SU	0145 1.5 0707 0.5 1448 1.5 1930 0.6
7 SU	0402 1.7 0901 1.5 1637 1.8 2117 0.6	22 M	0305 1.6 0829 0.4 1550 1.7 2044 0.5
8 M	0453 1.8 0946 0.4 1725 1.9 2204 0.4	23 TU	0408 1.8 0922 0.3 1647 1.9 2141 0.4
9 TU	0540 1.9 1029 0.3 1809 2.0 2249 0.3	24 W	0505 1.9 1012 0.2 1740 2.0 2233 0.3
10 W	0623 2.0 1109 0.2 1849 2.1 2329 0.3	25 TH	0559 2.1 1101 0.1 1829 2.2 2323 0.2
11 TH	0700 2.0 1146 0.2 1923 2.1	26 F	0650 2.2 1147 0.1 1917 2.3
12 F	0005 0.2 0731 2.0 1219 0.2 1952 2.1	27 SA	0008 0.2 0742 2.2 1231 0.1 2003 2.3
13 SA	0038 0.3 0800 1.9 1249 0.3 2020 2.0	28 SU	0053 0.1 0835 2.2 1314 0.1 2049 2.3
14 SU	0107 0.3 0829 1.8 1316 0.3 2047 1.9	29 M	0136 0.2 0924 2.1 1357 0.3 2132 2.2
15 M	0134 0.4 0858 1.7 1342 0.4 2112 1.7	30 TU	0222 0.3 1009 1.9 1442 0.4 2215 2.0
		31 W	0311 0.4 1055 1.7 1532 0.6 2300 1.8

June

Time	m	Time	m
1 TH	0408 0.5 1151 1.5 1628 0.7 2353 1.6	16 F	0319 0.4 1037 1.5 1532 0.5 2252 1.6
2 F	0509 0.6 1305 1.4 1730 0.8	17 SA	0414 0.4 1131 1.4 1633 0.6 2350 1.5
3 SA	0108 1.5 0614 0.7 1415 1.4 1836 0.8	18 SU	0515 0.5 1241 1.4 1739 0.6
4 SU	0225 1.5 0716 0.6 1513 1.5 1938 0.8	19 M	0102 1.5 0622 0.5 1404 1.5 1849 0.6
5 M	0325 1.6 0813 0.6 1604 1.7 2035 0.7	20 TU	0222 1.6 0736 0.4 1512 1.6 2002 0.6
6 TU	0419 1.6 0904 0.5 1653 1.8 2126 0.6	21 W	0331 1.7 0846 0.4 1612 1.8 2111 0.5
7 W	0508 1.7 0951 0.4 1737 1.9 2215 0.5	22 TH	0434 1.8 0945 0.3 1709 2.0 2211 0.4
8 TH	0551 1.8 1037 0.3 1817 2.0 2301 0.4	23 F	0534 1.9 1039 0.2 1803 2.2 2306 0.3
9 F	0631 1.9 1118 0.3 1854 2.1 2343 0.4	24 SA	0631 2.1 1129 0.2 1854 2.3 2356 0.2
10 SA	0706 1.9 1156 0.3 1929 2.1	25 SU	0728 2.1 1216 0.1 1945 2.3
11 SU	0019 0.3 0740 1.9 1228 0.3 2002 2.0	26 M	0041 0.2 0829 2.1 1259 0.2 2036 2.3
12 M	0051 0.3 0812 1.8 1259 0.3 2033 1.9	27 TU	0126 0.2 0919 2.1 1343 0.2 2122 2.2
13 TU	0122 0.4 0843 1.7 1331 0.4 2101 1.8	28 W	0210 0.2 0959 2.0 1426 0.3 2203 2.1
14 W	0156 0.4 0915 1.6 1405 0.4 2130 1.7	29 TH	0255 0.3 1036 1.8 1510 0.5 2241 1.9
15 TH	0234 0.4 0952 1.6 1444 0.5 2207 1.7	30 F	0343 0.4 1116 1.6 1558 0.6 2320 1.7

July

Time	m	Time	m
1 SA	0434 0.5 1204 1.5 1651 0.7	16 SU	0353 0.3 1104 1.5 1609 0.5 2323 1.6
2 SU	0006 1.6 0531 0.6 1313 1.4 1753 0.8	17 M	0447 0.4 1204 1.5 1709 0.6
3 M	0109 1.4 0633 0.7 1429 1.4 1859 0.8	18 TU	0027 1.5 0549 0.5 1324 1.5 1816 0.7
4 TU	0230 1.4 0733 0.6 1528 1.5 2000 0.8	19 W	0151 1.5 0700 0.5 1442 1.6 1933 0.7
5 W	0337 1.5 0827 0.6 1619 1.7 2055 0.7	20 TH	0309 1.6 0820 0.5 1548 1.7 2056 0.6
6 TH	0433 1.5 0919 0.5 1705 1.8 2147 0.6	21 F	0417 1.7 0929 0.4 1649 1.9 2203 0.5
7 F	0521 1.7 1008 0.4 1747 1.9 2239 0.5	22 SA	0521 1.8 1026 0.3 1745 2.1 2258 0.4
8 SA	0605 1.7 1054 0.4 1828 2.0 2325 0.4	23 SU	0621 2.0 1117 0.2 1838 2.2 2347 0.2
9 SU	0646 1.8 1136 0.3 1908 2.1	24 M	0720 2.1 1202 0.2 1930 2.3
10 M	0006 0.4 0725 1.8 1212 0.3 1946 2.1	25 TU	0030 0.2 0820 2.1 1245 0.1 2021 2.4
11 TU	0040 0.3 0801 1.8 1247 0.3 2021 2.0	26 W	0112 0.1 0905 2.1 1325 0.2 2105 2.3
12 W	0113 0.3 0833 1.8 1322 0.3 2052 1.9	27 TH	0152 0.2 0939 2.0 1405 0.2 2142 2.2
13 TH	0148 0.3 0903 1.7 1358 0.3 2120 1.9	28 F	0232 0.2 1009 1.9 1444 0.4 2214 2.0
14 F	0225 0.3 0937 1.7 1437 0.4 2153 1.8	29 SA	0312 0.4 1037 1.7 1523 0.5 2245 1.8
15 SA	0307 0.3 1016 1.6 1519 0.4 2233 1.7	30 SU	0352 0.5 1109 1.5 1602 0.7 2319 1.6
		31 M	0433 0.6 1148 1.4 1648 0.8

August

Time	m	Time	m
1 TU	0001 1.4 0528 0.7 1245 1.3 1818 0.9	16 W	0000 1.5 0519 0.6 1250 1.4 1749 0.7
2 W	0101 1.3 0656 0.7 1427 1.4 1933 0.8	17 TH	0136 1.4 0634 0.6 1424 1.5 1923 0.7
3 TH	0236 1.3 0758 0.7 1542 1.5 2032 0.7	18 F	0301 1.5 0819 0.6 1534 1.7 2115 0.6
4 F	0357 1.4 0852 0.6 1634 1.7 2125 0.6	19 SA	0411 1.6 0924 0.5 1636 1.9 2204 0.5
5 SA	0453 1.5 0944 0.5 1719 1.8 2218 0.5	20 SU	0514 1.8 1016 0.4 1732 2.1 2251 0.3
6 SU	0542 1.7 1032 0.4 1803 2.0 2307 0.4	21 M	0612 2.0 1104 0.3 1824 2.2 2335 0.2
7 M	0626 1.8 1117 0.4 1846 2.1 2349 0.3	22 TU	0706 2.1 1147 0.2 1914 2.3
8 TU	0709 1.9 1157 0.3 1929 2.1	23 W	0015 0.1 0756 2.2 1227 0.1 2001 2.4
9 W	0025 0.2 0750 1.9 1233 0.2 2009 2.1	24 TH	0053 0.1 0839 2.2 1305 0.1 2042 2.3
10 TH	0059 0.2 0823 1.9 1309 0.2 2041 2.1	25 F	0129 0.1 0911 2.1 1341 0.2 2115 2.2
11 F	0134 0.2 0850 1.9 1346 0.2 2106 2.0	26 SA	0204 0.2 0935 1.9 1415 0.3 2142 2.0
12 SA	0210 0.2 0918 1.8 1423 0.3 2135 1.9	27 SU	0236 0.3 0957 1.8 1447 0.4 2208 1.8
13 SU	0249 0.2 0953 1.7 1502 0.3 2213 1.8	28 M	0303 0.5 1023 1.6 1514 0.6 2239 1.6
14 M	0330 0.3 1036 1.6 1544 0.5 2259 1.6	29 TU	0324 0.6 1057 1.5 1542 0.7 2316 1.4
15 TU	0418 0.4 1130 1.5 1638 0.6	30 W	0353 0.7 1140 1.4 1630 0.8
		31 TH	0004 1.3 0447 0.8 1246 1.3 1915 0.9

LOW WATERS - Important note. Double low waters occur at Portland. The predictions are for the first low water. The second low water occurs from 3 to 4 hours later and may, at springs, on occasions be lower than the first.

September

Time	m	Time	m
1 F	0126 1.2 0734 0.8 1442 1.4 2012 0.8	16 SA	0259 1.4 0816 0.8 1524 1.6 2106 0.6
2 SA	0317 1.3 0830 0.7 1557 1.6 2105 0.6	17 SU	0405 1.6 0910 0.6 1624 1.8 2149 0.5
3 SU	0425 1.5 0920 0.6 1649 1.8 2155 0.5	18 M	0503 1.8 0959 0.5 1718 2.0 2233 0.3
4 M	0516 1.7 1009 0.5 1737 1.9 2242 0.4	19 TU	0555 2.0 1045 0.3 1808 2.2 2315 0.2
5 TU	0604 1.8 1054 0.4 1823 2.1 2325 0.3	20 W	0642 2.2 1128 0.2 1855 2.3 2355 0.1
6 W	0649 2.0 1135 0.3 1908 2.2	21 TH	0727 2.2 1207 0.1 1938 2.3
7 TH	0003 0.2 0732 2.0 1213 0.2 1950 2.2	22 F	0029 0.1 0807 2.2 1241 0.1 2014 2.3
8 F	0038 0.1 0809 2.1 1251 0.2 2025 2.2	23 SA	0101 0.1 0836 2.1 1314 0.2 2042 2.1
9 SA	0114 0.1 0833 2.1 1327 0.2 2048 2.1	24 SU	0132 0.2 0856 2.0 1345 0.3 2107 2.0
10 SU	0150 0.1 0857 2.0 1404 0.2 2117 2.0	25 M	0200 0.4 0919 1.9 1413 0.4 2135 1.8
11 M	0227 0.2 0931 1.9 1441 0.3 2154 1.8	26 TU	0221 0.5 0945 1.7 1437 0.6 2205 1.6
12 TU	0305 0.4 1012 1.8 1522 0.5 2241 1.6	27 W	0238 0.6 1016 1.6 1502 0.7 2240 1.4
13 W	0350 0.5 1104 1.6 1614 0.6 2345 1.4	28 TH	0306 0.7 1054 1.4 1546 0.8 2327 1.3
14 TH	0451 0.7 1222 1.5 1731 0.8	29 F	0359 0.8 1150 1.4 1901 0.9
15 F	0138 1.4 0623 0.8 1413 1.5 2251 0.7	30 SA	0039 1.2 0714 1.0 1333 1.3 1953 0.8

October

Time	m	Time	m
1 SU	0234 1.3 0807 0.8 1512 1.5 2042 0.6	16 M	0351 1.7 0845 0.7 1606 1.8 2121 0.5
2 M	0351 1.5 0855 0.7 1615 1.7 2128 0.5	17 TU	0443 1.9 0935 0.6 1658 2.0 2206 0.4
3 TU	0446 1.7 0941 0.6 1706 1.9 2213 0.4	18 W	0531 2.1 1021 0.4 1747 2.1 2248 0.3
4 W	0535 1.9 1026 0.4 1755 2.1 2256 0.3	19 TH	0616 2.2 1104 0.3 1831 2.2 2327 0.2
5 TH	0622 2.1 1109 0.3 1841 2.2 2335 0.2	20 F	0658 2.3 1141 0.3 1911 2.2
6 F	0705 2.2 1149 0.2 1925 2.3	21 SA	0000 0.2 0734 2.3 1214 0.2 1944 2.2
7 SA	0012 0.1 0743 2.2 1228 0.2 2001 2.3	22 SU	0031 0.2 0800 2.2 1247 0.3 2010 2.1
8 SU	0050 0.1 0808 2.2 1306 0.2 2027 2.2	23 M	0101 0.3 0823 2.1 1318 0.4 2037 1.9
9 M	0127 0.2 0835 2.2 1344 0.2 2059 2.1	24 TU	0127 0.4 0848 1.9 1345 0.5 2106 1.8
10 TU	0205 0.3 0911 2.0 1423 0.3 2141 1.9	25 W	0147 0.5 0915 1.8 1408 0.6 2136 1.6
11 W	0244 0.4 0955 1.9 1506 0.5 2232 1.7	26 TH	0206 0.6 0941 1.7 1435 0.7 2211 1.5
12 TH	0329 0.6 1048 1.7 1602 0.7 2346 1.5	27 F	0232 0.7 1016 1.5 1516 0.8 2257 1.4
13 F	0433 0.8 1207 1.5 1732 0.8	28 SA	0313 0.8 1111 1.4 1847 0.9
14 SA	0133 1.4 0615 0.9 1358 1.5 1946 0.8	29 SU	0002 1.3 0443 0.9 1229 1.4 1933 0.8
15 SU	0250 1.5 0746 0.9 1508 1.7 2034 0.7	30 M	0149 1.3 0736 1.0 1423 1.5 2016 0.7
31 TU	0312 1.5 0822 0.8 1533 1.6 2058 0.5		

November

Time	m	Time	m
1 W	0410 1.7 0907 0.7 1630 1.8 2139 0.4	16 TH	0503 2.0 0948 0.6 1720 2.0 2211 0.4
2 TH	0502 1.9 0952 0.5 1722 2.0 2221 0.3	17 F	0547 2.1 1031 0.5 1804 2.1 2252 0.3
3 F	0549 2.1 1037 0.4 1810 2.2 2303 0.2	18 SA	0628 2.2 1111 0.4 1844 2.1 2329 0.3
4 SA	0632 2.2 1122 0.3 1854 2.3 2346 0.2	19 SU	0702 2.2 1148 0.4 1916 2.1
5 SU	0709 2.3 1204 0.2 1932 2.3	20 M	0003 0.3 0731 2.2 1223 0.4 1945 2.0
6 M	0026 0.2 0743 2.3 1245 0.2 2009 2.2	21 TU	0035 0.4 0758 2.1 1256 0.4 2015 1.9
7 TU	0106 0.2 0818 2.3 1327 0.3 2050 2.1	22 W	0102 0.5 0827 2.0 1324 0.5 2046 1.8
8 W	0146 0.3 0900 2.2 1409 0.4 2137 2.0	23 TH	0126 0.5 0855 1.9 1352 0.6 2117 1.7
9 TH	0229 0.5 0947 2.0 1457 0.5 2233 1.8	24 F	0150 0.6 0922 1.7 1422 0.6 2150 1.5
10 F	0317 0.7 1041 1.8 1558 0.7 2346 1.6	25 SA	0219 0.7 0955 1.6 1503 0.7 2233 1.4
11 SA	0421 0.9 1152 1.6 1716 0.8	26 SU	0258 0.8 1044 1.5 1603 0.7 2329 1.4
12 SU	0113 1.5 0540 1.0 1331 1.6 1839 0.8	27 M	0146 1.5 0609 1.0 1359 1.6 1852 0.7
13 M	0226 1.5 0659 1.0 1442 1.6 1948 0.7	28 TU	0048 1.4 0533 0.9 1314 1.5 1833 0.7
14 TU	0325 1.7 0806 0.9 1539 1.8 2042 0.6	29 W	0222 1.5 0654 0.9 1442 1.6 2004 0.6
15 W	0416 1.9 0900 0.7 1632 1.9 2128 0.5	30 TH	0327 1.7 0814 0.8 1545 1.7 2056 0.5

December

Time	m	Time	m
1 F	0421 1.9 0913 0.6 1641 1.9 2145 0.4	16 SA	0518 2.0 0957 0.6 1737 1.8 2218 0.5
2 SA	0511 2.1 1005 0.5 1735 2.1 2233 0.3	17 SU	0559 2.1 1043 0.5 1818 1.9 2301 0.4
3 SU	0557 2.2 1056 0.4 1824 2.2 2321 0.2	18 M	0636 2.1 1126 0.5 1855 1.9 2340 0.4
4 M	0641 2.3 1144 0.3 1911 2.2	19 TU	0709 2.1 1206 0.4 1927 1.9
5 TU	0006 0.2 0724 2.4 1229 0.3 2000 2.2	20 W	0015 0.4 0742 2.1 1241 0.4 2001 1.9
6 W	0050 0.2 0809 2.4 1315 0.3 2051 2.1	21 TH	0046 0.4 0814 2.0 1312 0.5 2033 1.8
7 TH	0134 0.3 0856 2.3 1401 0.3 2142 2.0	22 F	0115 0.5 0845 1.9 1343 0.5 2104 1.7
8 F	0218 0.5 0945 2.1 1450 0.4 2231 1.9	23 SA	0146 0.5 0913 1.8 1416 0.5 2135 1.6
9 SA	0306 0.6 1035 2.0 1545 0.6 2324 1.7	24 SU	0218 0.6 0943 1.7 1455 0.5 2211 1.5
10 SU	0400 0.8 1129 1.8 1645 0.7	25 M	0255 0.6 1022 1.6 1543 0.5 2257 1.5
11 M	0032 1.6 0502 0.9 1241 1.6 1748 0.7	26 TU	0347 0.7 1114 1.6 1641 0.6 2357 1.4
12 TU	0146 1.5 0609 1.0 1359 1.6 1852 0.7	27 W	0456 0.8 1220 1.5 1745 0.6
13 W	0249 1.6 0716 0.9 1503 1.6 1952 0.7	28 TH	0118 1.5 0609 0.8 1345 1.5 1855 0.6
14 TH	0343 1.7 0816 0.8 1559 1.7 2044 0.6	29 F	0238 1.6 0722 0.7 1501 1.6 2008 0.5
15 F	0433 1.8 0908 0.7 1650 1.8 2132 0.5	30 SA	0340 1.8 0836 0.7 1606 1.7 2114 0.4
31 SU	0438 2.0 0940 0.6 1707 1.9 2211 0.4		

LOW WATERS - Important note. Double low waters occur at Portland. The predictions are for the first low water. The second low water occurs from 3 to 4 hours later and may, at springs, on occasions be lower than the first.

January 2018

	Time	m	Time	m
1 M	0532	2.1	16 TU	0613 2.0 1109 0.5 1837 1.8 2304 0.3
2 TU O	0622 2.3 1131 0.4 1900 2.1 2353 0.2		17 W ●	0652 2.1 1152 0.4 1915 1.9
3 W	0712 2.4 1219 0.3 1957 2.2		18 TH	0001 0.4 0729 2.1 1229 0.4 1951 1.9
4 TH	0038 0.2 0802 2.4 1305 0.2 2053 2.2		19 F	0035 0.4 0805 2.1 1301 0.3 2024 1.8
5 F	0122 0.2 0853 2.4 1350 0.2 2137 2.1		20 SA	0107 0.4 0837 2.0 1333 0.3 2053 1.8
6 SA	0205 0.3 0939 2.2 1435 0.3 2216 2.0		21 SU	0140 0.4 0903 1.9 1406 0.3 2120 1.7
7 SU	0248 0.5 1021 2.1 1521 0.4 2255 1.8		22 M	0213 0.4 0930 1.8 1443 0.3 2149 1.7
8 M (0333 0.6 1101 1.9 1610 0.5 2338 1.6		23 TU	0248 0.4 1003 1.7 1523 0.4 2228 1.6
9 TU	0421 0.7 1147 1.7 1703 0.6		24 W)	0327 0.5 1046 1.6 1610 0.4 2317 1.5
10 W	0036 1.5 0520 0.9 1246 1.5 1804 0.7		25 TH	0419 0.6 1141 1.5 1708 0.5
11 TH	0155 1.4 0630 0.9 1409 1.4 1907 0.7		26 F	0022 1.4 0529 0.7 1258 1.4 1815 0.6
12 F	0303 1.5 0738 0.9 1520 1.4 2006 0.7		27 SA	0153 1.5 0645 0.7 1431 1.5 1933 0.6
13 SA	0400 1.6 0836 0.8 1620 1.5 2059 0.6		28 SU	0310 1.6 0812 0.7 1545 1.6 2056 0.5
14 SU	0449 1.8 0929 0.7 1711 1.6 2150 0.6		29 M	0415 1.8 0932 0.6 1653 1.7 2200 0.4
15 M	0533 1.9 1021 0.6 1756 1.7 2239 0.5		30 TU	0514 2.0 1031 0.4 1755 1.9 2253 0.3
			31 W O	0609 2.2 1123 0.3 1855 2.0 2342 0.2

February 2018

	Time	m	Time	m
1 TH	0702 2.3 1209 0.2 1957 2.2		15 TH ●	0632 2.0 1134 0.3 1900 1.8 2345 0.3
2 F	0026 0.1 0754 2.4 1252 0.1 2046 2.2		16 F	0714 2.1 1213 0.3 1940 1.9
3 SA	0107 0.1 0843 2.4 1333 0.1 2122 2.2		17 SA	0020 0.3 0753 2.1 1245 0.2 2016 1.9
4 SU	0147 0.2 0925 2.3 1414 0.1 2154 2.0		18 SU	0053 0.2 0827 2.1 1317 0.2 2043 1.9
5 M	0225 0.3 0959 2.1 1453 0.3 2223 1.9		19 M	0126 0.2 0851 2.0 1350 0.2 2103 1.8
6 TU	0302 0.4 1030 1.9 1532 0.4 2251 1.7		20 TU	0200 0.2 0913 1.9 1425 0.2 2129 1.8
7 W (0338 0.6 1102 1.7 1610 0.6 2323 1.5		21 W	0234 0.2 0944 1.8 1502 0.2 2203 1.7
8 TH	0414 0.7 1140 1.5 1650 0.7		22 TH	0308 0.3 1024 1.7 1543 0.3 2247 1.6
9 F	0007 1.4 0503 0.9 1233 1.3 1816 0.8		23 F)	0349 0.4 1115 1.5 1634 0.5 2344 1.5
10 SA	0130 1.3 0706 0.9 1419 1.2 1934 0.8		24 SA	0451 0.6 1227 1.4 1742 0.6
11 SU	0321 1.4 0812 0.8 1548 1.3 2033 0.7		25 SU	0115 1.4 0616 0.7 1418 1.3 1913 0.7
12 M	0420 1.5 0907 0.7 1646 1.4 2126 0.6		26 M	0252 1.5 1130 0.6 1536 1.5 2055 0.6
13 TU	0507 1.7 1000 0.6 1734 1.6 2217 0.5		27 TU	0401 1.7 0940 0.5 1644 1.6 2152 0.4
14 W	0550 1.9 1049 0.4 1818 1.7 2304 0.4		28 W	0502 1.9 1026 0.4 1747 1.8 2242 0.3

March 2018

	Time	m	Time	m
1 TH	0557 2.1 1112 0.2 1846 2.0 2328 0.1		16 F	0608 1.9 1109 0.3 1837 1.9 2321 0.3
2 F O	0650 2.3 1155 0.1 1939 2.2		17 SA ●	0652 2.0 1148 0.2 1920 2.0 2359 0.2
3 SA	0010 0.0 0741 2.4 1234 0.0 2024 2.2		18 SU	00735 2.1 1222 0.1 2000 2.0
4 SU	0049 0.0 0827 2.4 1312 0.0 2059 2.2		19 M	0033 0.1 0812 2.1 1255 0.1 2030 2.0
5 M	0125 0.0 0903 2.3 1348 0.1 2128 2.1		20 TU	0108 0.1 0835 2.1 1329 0.1 2045 2.0
6 TU	0159 0.1 0931 2.1 1421 0.2 2149 1.9		21 W	0142 0.1 0855 2.0 1405 0.1 2110 1.9
7 W	0231 0.3 0957 1.9 1452 0.4 2211 1.7		22 TH	0217 0.2 0928 1.9 1441 0.2 2145 1.8
8 TH	0300 0.5 1025 1.7 1518 0.5 2239 1.5		23 F	0252 0.3 1010 1.7 1521 0.3 2228 1.7
9 F (0326 0.6 1059 1.4 1540 0.6 2315 1.4		24 SA)	0333 0.4 1102 1.5 1610 0.5 2323 1.5
10 SA	0358 0.7 1142 1.3 1617 0.7		25 SU	0433 0.6 1218 1.3 1720 0.7
11 SU	0003 1.3 0643 0.9 1247 1.2 1904 0.8		26 M	0054 1.4 0606 0.7 1414 1.3 1916 0.7
12 M	0140 1.3 0750 0.8 1500 1.2 2007 0.8		27 TU	0239 1.5 1117 0.5 1528 1.4 2043 0.6
13 TU	0339 1.4 0844 0.6 1616 1.3 2101 0.6		28 W	0348 1.6 0931 0.5 1632 1.6 2136 0.5
14 W	0435 1.6 0935 0.5 1707 1.5 2152 0.5		29 TH	0448 1.9 1011 0.3 1730 1.9 2224 0.3
15 TH	0522 1.8 1024 0.4 1753 1.7 2239 0.4		30 F	0542 2.1 1055 0.2 1823 2.0 2310 0.2
			31 SA O	0634 2.2 1135 0.1 1911 2.2 2350 0.1

April 2018

	Time	m	Time	m
1 SU	0721 2.3 1213 0.0 1954 2.2		16 M ●	0708 2.1 1155 0.1 1934 2.1
2 M	0026 0.0 0803 2.3 1246 0.0 2031 2.2		17 TU	0009 0.1 0748 2.2 1230 0.1 2008 2.1
3 TU	0100 0.1 0835 2.2 1318 0.1 2056 2.1		18 W	0046 0.1 0813 2.1 1307 0.1 2027 2.1
4 W	0132 0.1 0859 2.0 1349 0.2 2115 1.9		19 TH	0123 0.1 0839 2.1 1345 0.1 2055 2.0
5 TH	0202 0.3 0925 1.8 1417 0.4 2139 1.8		20 F	0201 0.2 0917 1.9 1424 0.2 2134 1.9
6 F	0230 0.4 0955 1.6 1439 0.5 2208 1.6		21 SA	0241 0.3 1003 1.7 1507 0.4 2221 1.8
7 SA	0254 0.5 1030 1.5 1501 0.6 2242 1.5		22 SU)	0328 0.4 1100 1.5 1600 0.6 2317 1.6
8 SU (0326 0.7 1112 1.3 1539 0.7 2326 1.4		23 M	0433 0.6 1228 1.4 1712 0.7
9 M	0422 0.8 1208 1.2 1644 0.8		24 TU	0047 1.5 0611 0.7 1404 1.4 1849 0.8
10 TU	0031 1.3 0726 0.8 1352 1.2 1938 0.8		25 W	0223 1.5 1059 0.5 1513 1.5 2013 0.7
11 W	0232 1.3 0819 0.6 1529 1.3 2032 0.7		26 TH	0329 1.7 0903 0.5 1612 1.7 2110 0.5
12 TH	0349 1.5 0907 0.5 1629 1.5 2122 0.6		27 F	0427 1.8 0946 0.3 1705 1.9 2200 0.4
13 F	0445 1.7 0954 0.4 1719 1.7 2208 0.4		28 SA	0521 2.0 1029 0.2 1755 2.0 2245 0.3
14 SA	0536 1.9 1038 0.3 1807 1.9 2252 0.3		29 SU	0610 2.1 1109 0.1 1841 2.1 2326 0.2
15 SU	0624 2.0 1118 0.2 1853 2.0 2332 0.2		30 M O	0656 2.2 1145 0.1 1924 2.2

Bon VOYAGE

We hope that you have enjoyed your stay, and discovering all that Weymouth has to offer.

We would be pleased to hear about your stay with us and welcome all feedback on your experience or suggestions on how we could try to improve. Comment cards are available in the harbour reception and shower area, or feel free to have a chat with a member of the team.

Have a safe onward journey; we look forward to welcoming you again.

Weymouth Harbour Team



Approximate distances in nautical miles from Weymouth Harbour:

ALDERNEY	54
CHERBOURG	66
COWES	45
DARTMOUTH	50
FALMOUTH	104
GUERNSEY	71
JERSEY	90
LYMINGTON	41
THE NEEDLES	34
POOLE	26
PORTSMOUTH	57
SOUTHAMPTON	53
ST MALO	125
SWANAGE	22
YARMOUTH	39



Guernsey

YOUR NEXT PORT OF CALL

One of the finest natural anchorages in the Channel Islands.



- VAT free area • Competitive charges
- 400 visitors' berths • 24hr marina supervision
- Good positioning for early and late season cruising
- Stay 3 nights, get the 4th for free*



 **GuernseyHarbours**
www.guernseyharbours.gov.gg



Tel: 01481 720229 Email: guernsey.harbour@gov.gg

*Excluding June, July & August

POOLE QUAY
Boat Haven

PORT OF POOLE
Marina



VISITOR MARINA

Use your boat as a holiday home; entertain family, friends, colleagues or customers onboard; sail the stunning Jurassic Coast. Enjoy all the attractions of Poole, Bournemouth and beautiful Dorset. A warm welcome always awaits!

PERMANENT BERTHS

Whatever you love to do, you'll love our new marina. It's in a private position that makes the very most of the views and gorgeous sunsets, yet it's still close to Poole's historic quay, old town and vibrant shopping centre.

SWINGING MOORINGS

Relax with a glass of wine, on a sunny afternoon, on your own swinging mooring in Poole Harbour overlooking beautiful Brownsea Island. Away from the madding crowd, these offer you ultimate privacy, peace & tranquillity.

DRIVE A JET SKI OR RIB?

Storing your craft on a Jet Ski or RIB Dock has the advantage of 'out-of-water' storage but still offers the convenience of marina berthing and reduces the need for anti-fouling.



Port of Poole Marina & Poole Quay Boat Haven
Poole Town Quay, Poole, Dorset BH15 1HJ
t:01202 649488
www.poolequayboathaven.co.uk
VHF Channel 80 call sign 'Poole Quay Boat Haven'

POOLE HARBOUR
BOAT SHOW
19th ~ 21st MAY 2017





WE DISCOVER



WE ENTERTAIN



WE EAT



WE ENJOY



WE WELCOME

For all your tourist information and events in Weymouth

WeAreWeymouth.co.uk

Weymouth, the perfect place to be all year round

Follow us on Facebook and Twitter

 @WEAREWEYMOUTHUK

 WEAREWEYMOUTHUK

 WEAREWEYMOUTHUK

WEYMOUTH
WEAREWEYMOUTH.CO.UK

LOCAL BUSINESS
SUPPORTING
WEYMOUTH

